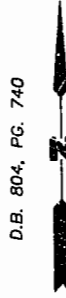


**CURVE TABLE**

NUMBER	DELTA	RADIUS	LENGTH	TANGENT	CHORD	CH. BEARING
C1	07°44'21"	2163.47'	292.23'	146.34'	292.01'	S64°09'10"W
C2	14°08'26"	112.50'	27.76'	13.95'	27.69'	N08°15'50"E
C3	03°00'04"	1064.91'	55.78'	27.90'	55.77'	N61°47'01"E
C4	06°37'59"	1064.91'	123.28'	61.71'	123.21'	N66°36'02"E
C5	74°39'57"	63.00'	82.10'	48.05'	76.41'	N52°40'02"E
C6	41°50'17"	63.00'	46.00'	24.08'	44.99'	N36°15'12"E
C7	32°49'40"	63.00'	36.10'	18.56'	35.60'	N73°35'10"E
C8	67°42'03"	63.00'	74.44'	42.26'	70.19'	N56°08'58"W
C9	05°26'09"	1064.91'	101.03'	50.55'	100.99'	N67°11'57"E
C10	01°11'50"	1064.91'	22.22'	11.13'	22.25'	N63°52'50"E

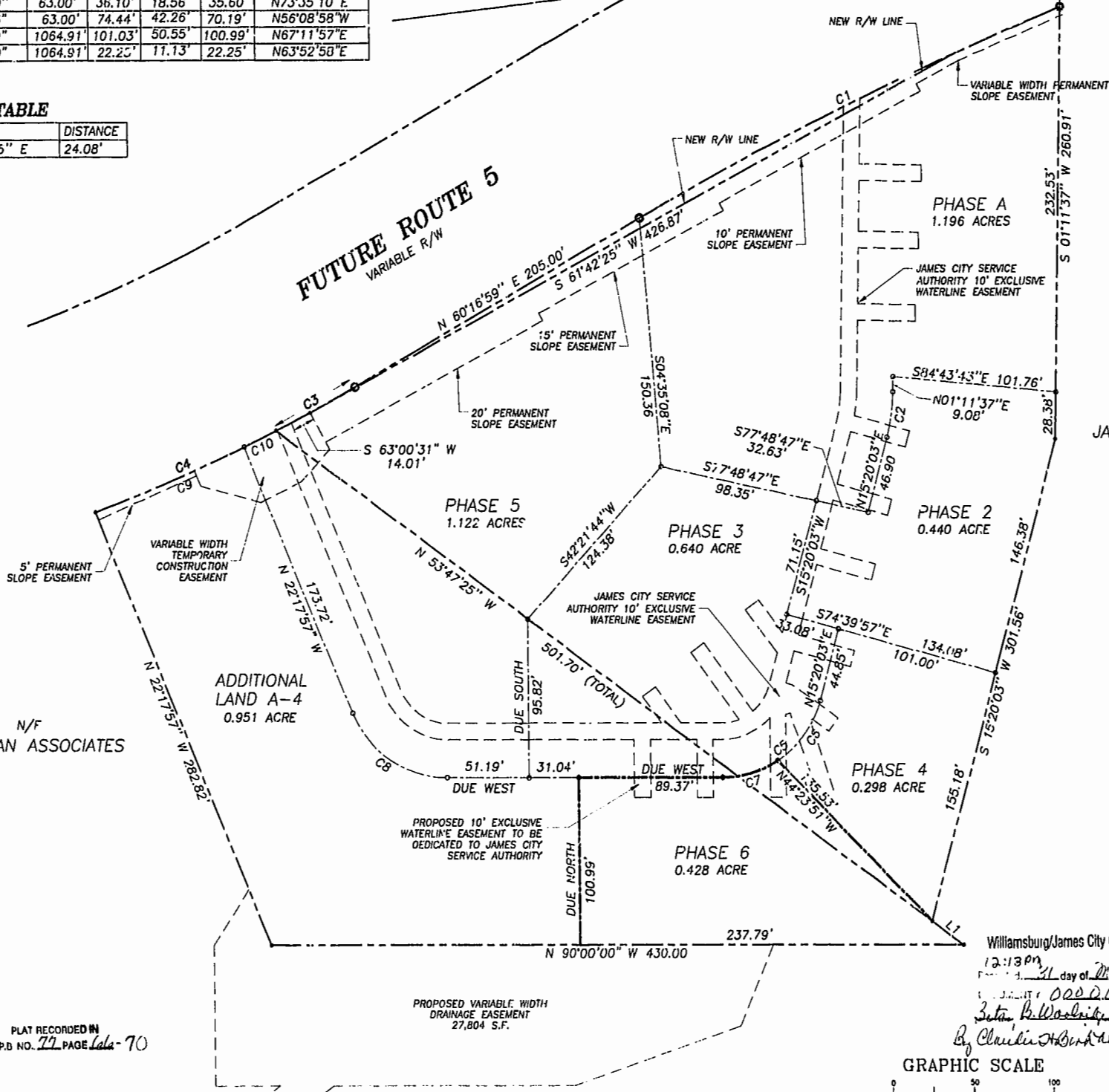
**LINE TABLE**

NUMBER	DIRECTION	DISTANCE
L1	S 53°47'25" E	24.08'



**POWHATAN SECONDARY**  
60' R/W

**FUTURE ROUTE 5**  
VARIABLE R/W



- NOTES:**
- MERIDIAN BASED ON PLAT RECORDED IN D.B. 803, PG. 740.
  - TAX MAP FOR PARCEL (38-3) (1-9) (1-19)
  - TOTAL AREA OF PHASE E = 0.428 ACRE
  - TOTAL REMAINING AREA OF PARCEL D = 0.000 ACRE
  - TOTAL AREA OF ADDITIONAL LAND = 0.951 ACRE
  - PROPERTY LINES AS SHOWN BASED UPON OTHER AVAILABLE INFORMATION AND DOES NOT REPRESENT A RESURVEY OF THE BOUNDARIES.
  - IN ADDITION TO THE EASEMENTS DEPICTED HEREON, THE FOLLOWING EASEMENTS AFFECT THE PROPERTY:
    - EASEMENT TO VIRGINIA ELECTRIC AND POWER COMPANY RECORDED IN D.B. 39, PG. 465, ET SEQ.
    - EASEMENT TO VIRGINIA ELECTRIC AND POWER COMPANY RECORDED IN D.B. 42, PG. 497, ET SEQ.
    - EASEMENT TO CHESAPEAKE & POTOMAC TELEPHONE COMPANY RECORDED IN D.B. 117, PG. 149, ET SEQ.
    - EASEMENTS CONTAINED IN THAT CERTAIN DECLARATION OF COVENANTS AND RESTRICTIONS RECORDED IN D.B. 215, PG. 722, ET SEQ., AS AMENDED, INCLUDING THE AMENDMENT RECORDED DOCUMENT NO 970015116, ON SEPTEMBER 16, 1997 AT PG. 219, ET SEQ.
    - EASEMENTS CONTAINED IN THAT CERTAIN DECLARATION OF COVENANTS INSPECTION/MAINTENANCE OF RUNOFF CONTROL FACILITY RECORDED IN D.B. 736, PG. 787, ET SEQ.
    - LIMITATIONS CONTAINED IN THAT CERTAIN PROFFER AGREEMENT RECORDED IN D.B. 790, PG. 34, ET SEQ.
    - LIMITATIONS CONTAINED IN THAT CERTAIN PROFFER AGREEMENT RECORDED IN D.B. 803, PG. 740, ET SEQ.
    - DEED OF EASEMENT FOR DRAINAGE, MAINTENANCE AND FACILITIES RECORDED IN DOCUMENT NO. 970015117, ON SEPTEMBER 16, 1997, AT PG. 224, ET SEQ.
    - EASEMENTS CONTAINED IN THAT CERTAIN DECLARATION OF COVENANTS INSPECTION/MAINTENANCE OF DRAINAGE SYSTEM RECORDED IN DOCUMENT NO. 98000658, ON JUNE 15, 1998 AT PG. 33, ET SEQ.
    - EASEMENTS TO VIRGINIA ELECTRIC AND POWER COMPANY RECORDED IN DOCUMENT NO. 980022434, ON NOVEMBER 18, 1998, AT PG. 339, ET SEQ.

N/F

JAMES OXFORD LIMITED PARTNERSHIP



THE UNDERSIGNED CERTIFIES THAT THESE PLATS ARE ACCURATE AND COMPLY WITH THE PROVISIONS OF CODE OF VIRGINIA, SECTION 55-79.58.A AND THAT ALL UNITS OR PORTIONS THEREOF DEPICTED HEREON AND ALL COMMON ELEMENTS HAVE BEEN SUBSTANTIALLY COMPLETED.

SIGNED: *W. Page Cockrell*  
W. PAGE COCKRELL, L.S.

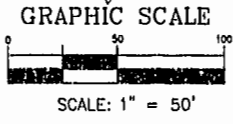
EXHIBIT B-5

**SUPPLEMENTAL CONDOMINIUM PLAT**  
**OF**  
**CROMWELL RIDGE CONDOMINIUM**  
JAMES CITY COUNTY, VIRGINIA

DATE: 5/23/00 SHEET 1 OF 5 SCALE: 1"=50'  
PROJECT NO: 30807.00 DRAWN BY: SAA



Williamsburg/James City County  
12:13 PM  
31 day of May 2000  
COUNTY OF JAMES CITY  
JAMES CITY COUNTY, VIRGINIA  
By *Charles H. Burdette, Clerk*



**LEGEND**  
- - - - - PROPERTY BOUNDARY LINE  
- - - - - PHASE LINE  
- - - - - EASEMENT LINE

PLAT RECORDED IN  
P.B. NO. 77, PAGE 16A-70

PROPOSED VARIABLE WIDTH  
DRAINAGE EASEMENT  
27,804 S.F.

