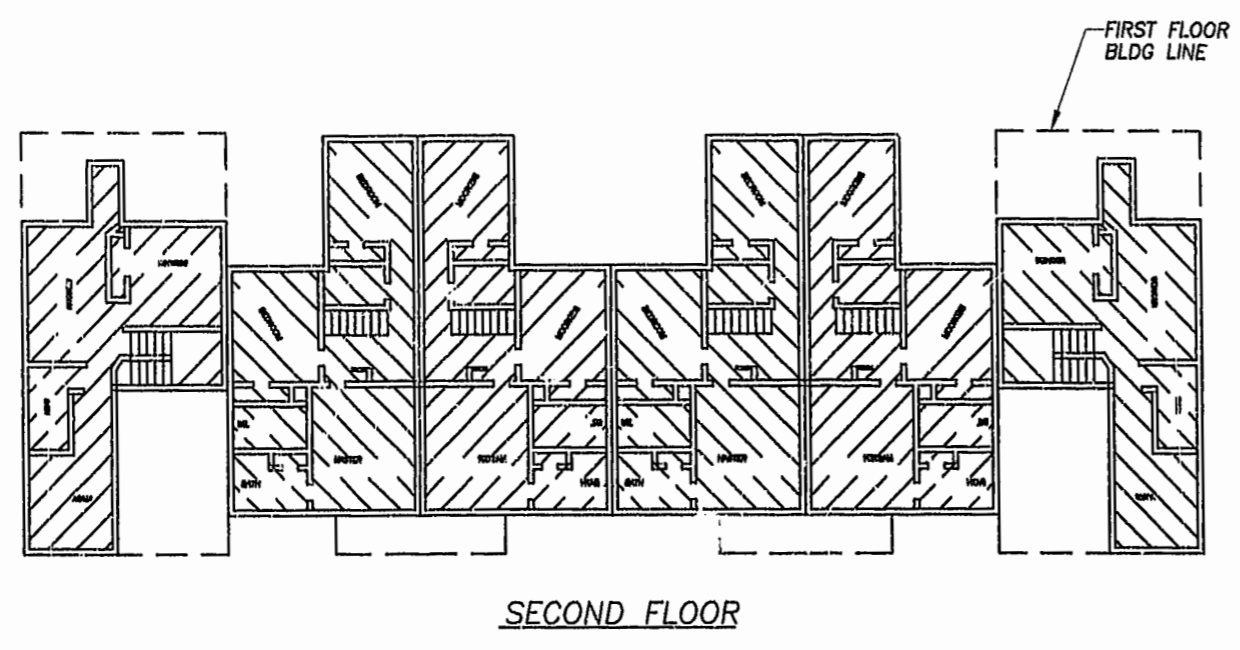
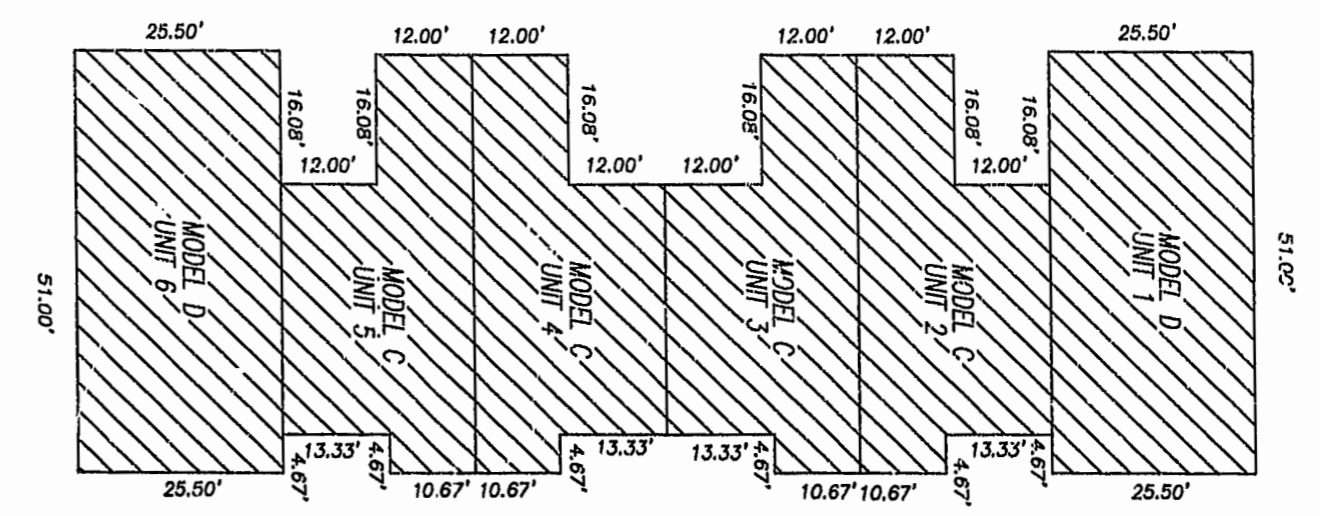


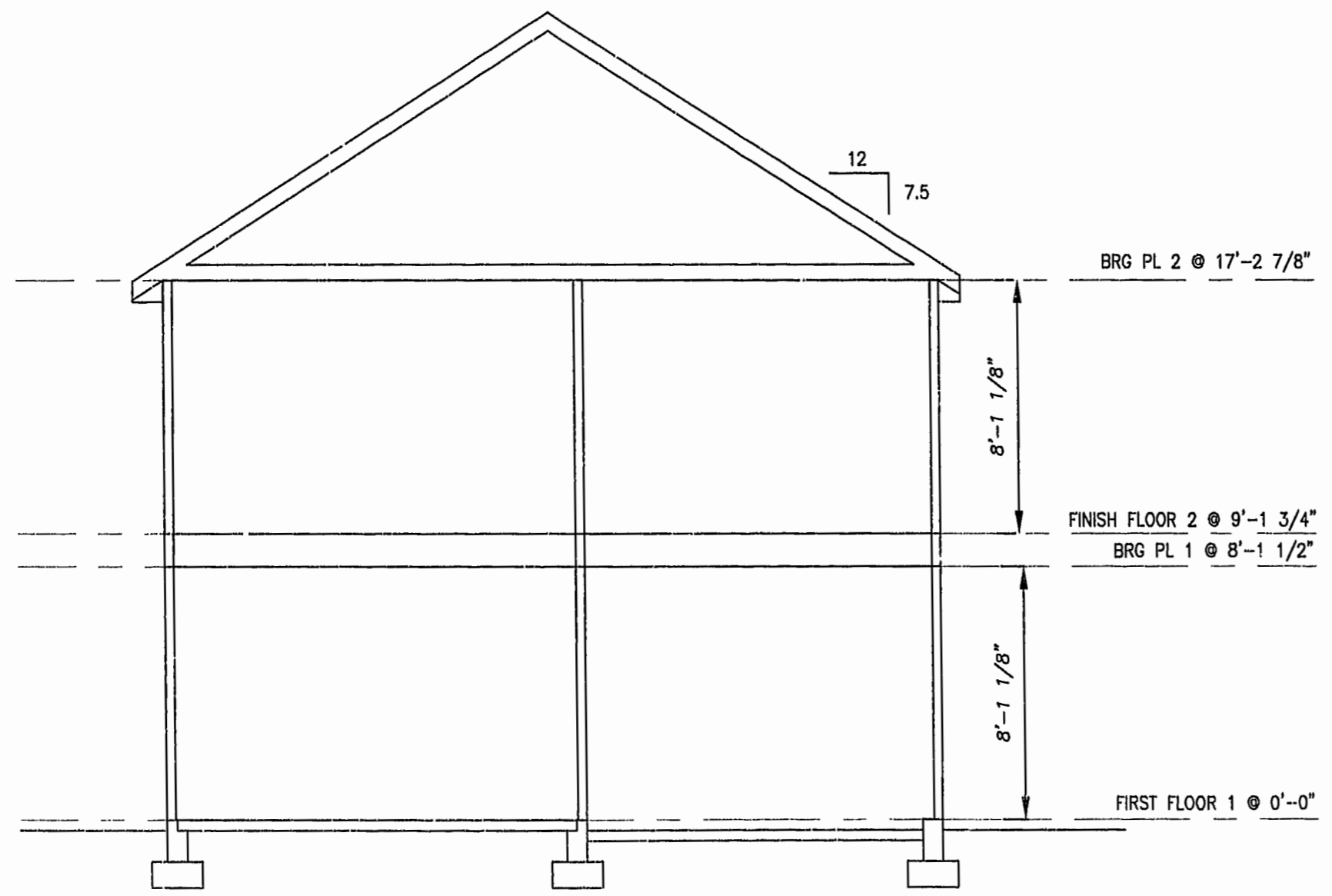
NOTE:
ALL BUILDING DIMENSIONS SHOWN ARE EXTERIOR DIMENSIONS



SECOND FLOOR



FIRST FLOOR



TYPICAL BUILDING SECTION



THE UNDERSIGNED CERTIFIES THAT THESE PLANS ARE ACCURATE AND COMPLY WITH THE PROVISIONS OF CODE OF VIRGINIA, SECTION 55-79.58.B AND THAT ALL UNITS OR PORTIONS THEREOF DEPICTED HEREON AND ALL COMMON ELEMENTS HAVE BEEN SUBSTANTIALLY COMPLETED.

SIGNED: *W. Page Cockrell*
W. PAGE COCKRELL, L.S.

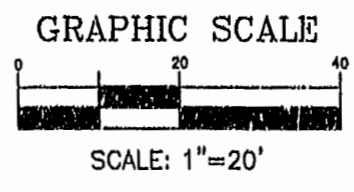
EXHIBIT B-4

SUPPLEMENTAL CONDOMINIUM PLAT
OF
CROMWELL RIDGE CONDOMINIUMS
JAMES CITY COUNTY, VIRGINIA

DATE: 4/12/00 SHEET 3 OF 5 SCALE: 1"=20'
PROJECT NO: 30807.00 DRAWN BY: SAA

VHIB Vanasse Hangen Brustlin, Inc.
Transportation Land Development Environmental Services
11832 Rock Landing Drive, Suite 203
Newport News, Virginia 23606
(757) 873-3386 • FAX (757) 873-0757

LEGEND
UNIT AREA



3:29PM
Recorded 19 day of May 2000
DOCUMENT # 000009564
Billie J. ... Clerk

PLAT RECORDED IN
P.B. NO. 77 PAGE 56-60

\\Vanehp\projects\97003\97003p1t.dwg Wed Apr 12 14:30:03 2000