

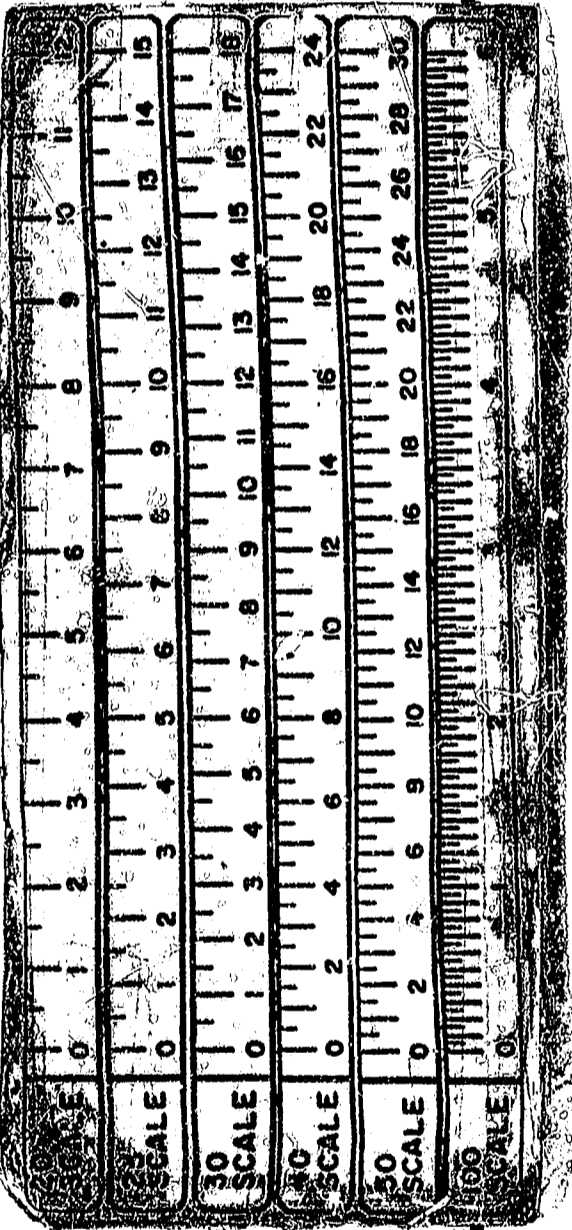
CURVE TABLE

NUMBER	DELTA	RADIUS	LENGTH	TANGENT	CHORD	CH. BEARING
C1	07°44'21"	2163.47'	292.23'	146.34'	292.01'	S64°09'10"W
C2	14°08'26"	112.50'	27.76'	13.95'	27.69'	N08°15'50"E
C3	03°00'04"	1064.91'	55.78'	27.90'	55.77'	N61°47'01"E
C4	06°37'59"	1064.91'	123.28'	61.71'	123.21'	N66°36'02"E
C5	74°39'57"	63.00'	82.10'	48.05'	76.41'	N52°40'02"E
C6	41°50'17"	63.00'	46.00'	24.08'	44.99'	N36°15'12"E
C7	32°49'40"	63.00'	36.10'	18.56'	35.60'	N73°35'10"E
C8	67°42'03"	63.00'	74.44'	42.26'	70.19'	N56°08'58"W
C9	05°26'09"	1064.91'	101.03'	50.55'	100.99'	N67°11'57"E
C10	01°11'50"	1064.91'	22.25'	11.13'	22.25'	N53°52'58"E

LINE TABLE

NUMBER	DIRECTION	DISTANCE
L1	S 53°47'25" E	24.08'

- NOTES:
1. MERIDIAN BASED ON PLAT RECORDED IN D.B. 803, PG. 740.
 2. TAX MAP FOR PARCEL (38-3) (1-9) (1-19)
 3. TOTAL AREA OF PHASE 5 = 1.122 ACRES
 4. TOTAL REMAINING AREA OF PARCEL D = 0.038 ACRE
 5. TOTAL AREA OF ADDITIONAL LAND = 1.379 ACRES
 6. PROPERTY LINES AS SHOWN BASED UPON OTHER AVAILABLE INFORMATION AND DOES NOT REPRESENT A RESURVEY OF THE BOUNDARIES.
 7. IN ADDITION TO THE EASEMENTS DEPICTED HEREON, THE FOLLOWING EASEMENTS AFFECT THE PROPERTY:
 - A. EASEMENT TO VIRGINIA ELECTRIC AND POWER COMPANY RECORDED IN D.B. 39, PG. 465, ET SEQ.
 - B. EASEMENT TO VIRGINIA ELECTRIC AND POWER COMPANY RECORDED IN D.B. 42, PG. 497, ET SEQ.
 - C. EASEMENT TO CHESAPEAKE & POTOMAC TELEPHONE COMPANY RECORDED IN D.B. 117, PG. 149, ET SEQ.
 - D. EASEMENTS CONTAINED IN THAT CERTAIN DECLARATION OF COVENANTS AND RESTRICTIONS RECORDED IN D.B. 215, PG. 722, ET SEQ., AS AMENDED, INCLUDING THE AMENDMENT RECORDED DOCUMENT NO 970015116, ON SEPTEMBER 16, 1997 AT PG. 219, ET SEQ.
 - E. EASEMENTS CONTAINED IN THAT CERTAIN DECLARATION OF COVENANTS INSPECTION/MAINTENANCE OF RUNOFF CONTROL FACILITY RECORDED IN D.B. 736, PG. 787, ET SEQ.
 - F. LIMITATIONS CONTAINED IN THAT CERTAIN PROFFER AGREEMENT RECORDED IN D.B. 790, PG. 34, ET SEQ.
 - G. LIMITATIONS CONTAINED IN THAT CERTAIN PROFFER AGREEMENT RECORDED IN D.B. 803, PG. 740, ET SEQ.
 - H. DEED OF EASEMENT FOR DRAINAGE, MAINTENANCE AND FACILITIES RECORDED IN DOCUMENT NO. 970015117, ON SEPTEMBER 16, 1997, AT PG. 224, ET SEQ.
 - I. EASEMENTS CONTAINED IN THAT CERTAIN DECLARATION OF COVENANTS INSPECTION/MAINTENANCE OF DRAINAGE SYSTEM RECORDED IN DOCUMENT NO. 98000658, ON JUNE 15, 1998 AT PG. 33, ET SEQ.
 - J. EASEMENTS TO VIRGINIA ELECTRIC AND POWER COMPANY RECORDED IN DOCUMENT NO. 980022434, ON NOVEMBER 18, 1998, AT PG. 339, ET SEQ.

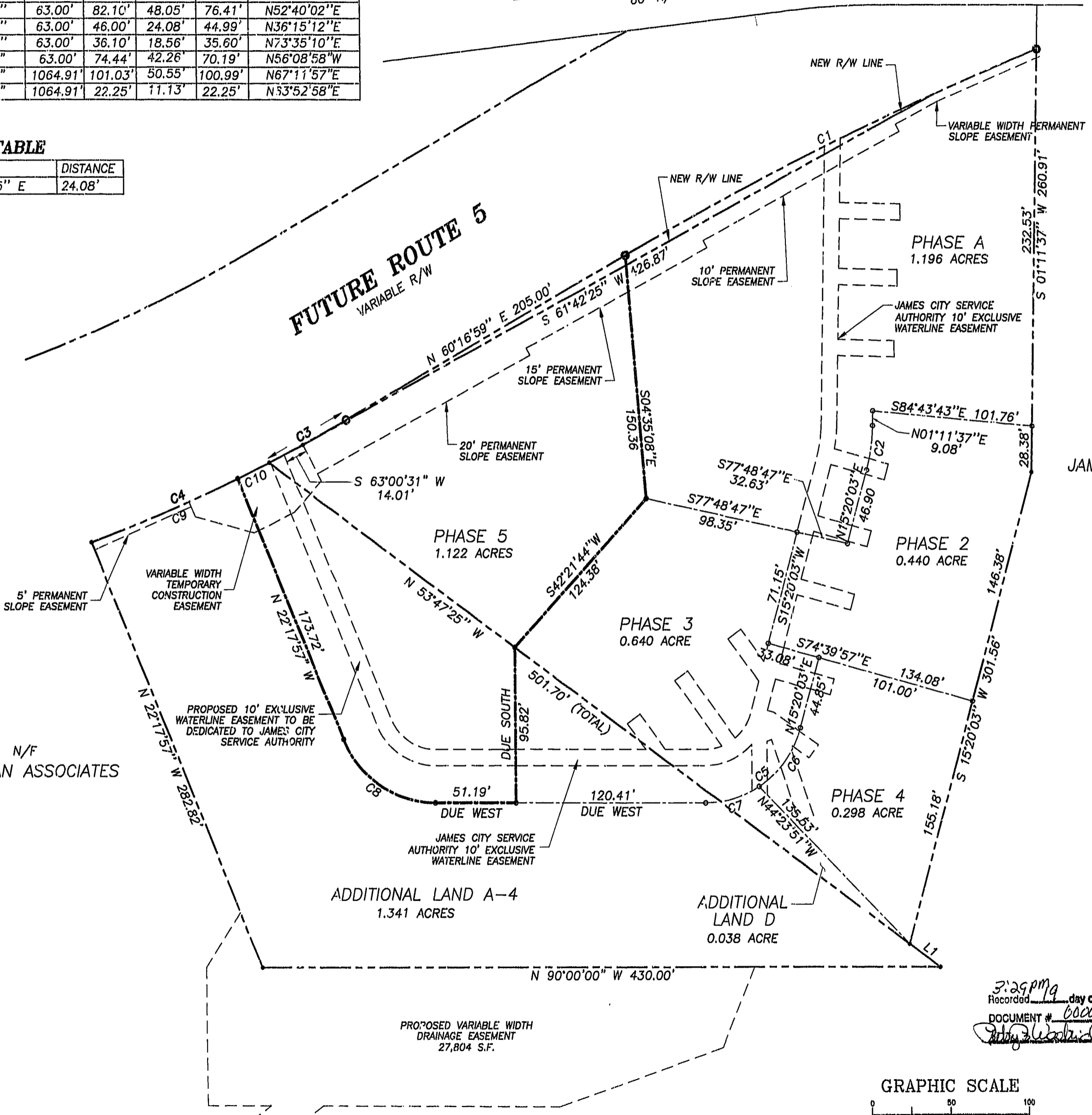


D.B. 804, PG. 740

N/F POWHATAN ASSOCIATES

POWHATAN SECONDARY
60' R/W

FUTURE ROUTE 5
VARIABLE R/W



N/F JAMES CXFORD LIMITED PARTNERSHIP



THE UNDERSIGNED CERTIFIES THAT THESE PLATS ARE ACCURATE AND COMPLY WITH THE PROVISIONS OF CODE OF VIRGINIA, SECTION 55-79.58.A AND THAT ALL UNITS OR PORTIONS THEREOF DEPICTED HEREON AND ALL COMMON ELEMENTS HAVE BEEN SUBSTANTIALLY COMPLETED.

SIGNED: *W. Page Cockrell*
W. PAGE COCKRELL, L.S.

EXHIBIT B-4

SUPPLEMENTAL CONDOMINIUM PLAT OF CROMWELL RIDGE CONDOMINIUMS

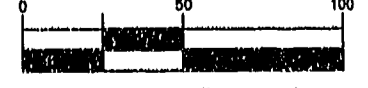
JAMES CITY COUNTY, VIRGINIA

DATE: 4/12/00 SHEET 1 OF 5 SCALE: 1"=50'

PROJECT NO: 30807.00 DRAWN BY: SAA

Recorded 3:29pm day of May 2000
DOCUMENT # 000009504
Anty Leckridge Clerk

GRAPHIC SCALE



SCALE: 1" = 50'

LEGEND

- PROPERTY BOUNDARY LINE
- PHASE LINE
- EASEMENT LINE

PLAT RECORDED IN P.B. NO. 77 PAGE 56-60

VHB Vanasse Hangen Brustlin, Inc.
Transportation Land Development Environmental Services
11832 Rock Landing Drive, Suite 203
Newport News, Virginia 23606
(757) 873-3386 FAX (757) 873-0757