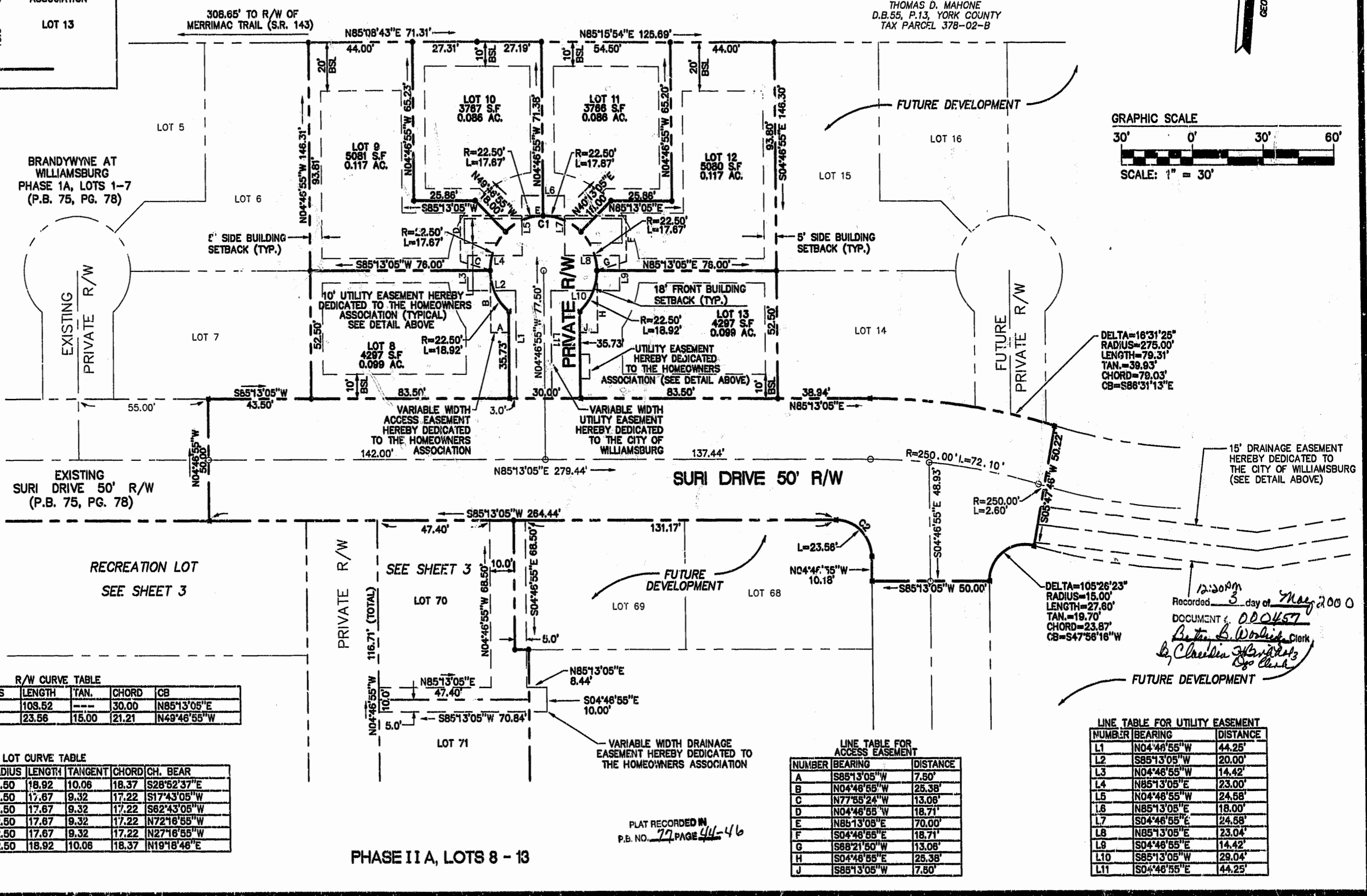
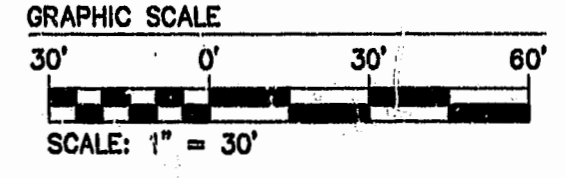
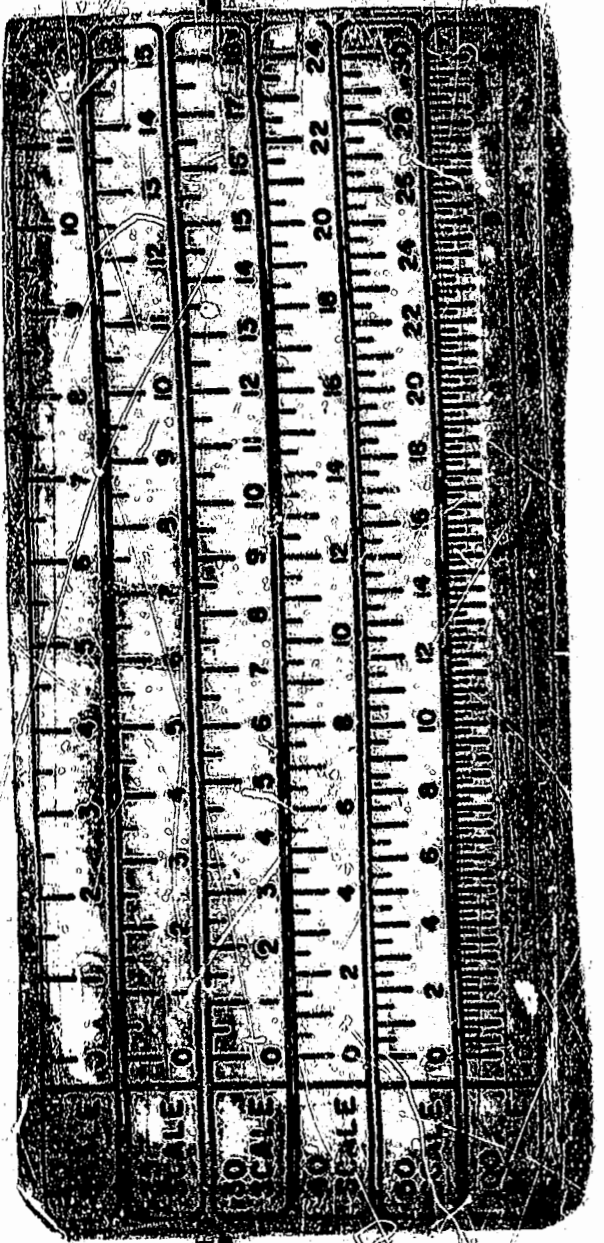
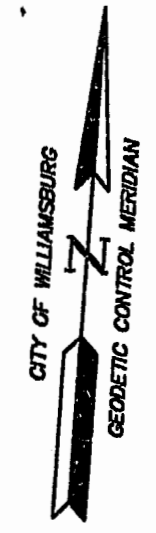


**LINE TABLE FOR UTILITY EASEMENT (CENTERLINE OF EASEMENT)**

NUMBER	BEARING	DISTANCE
L12	S88°04'31"E	93.79'
L13	N76°38'36"E	68.44'
L14	S84°54'09"E	72.98'
L15	S71°20'47"E	156.79'



**R/W CURVE TABLE**

NUMBER	DELTA	RADIUS	LENGTH	TAN.	CHORD	CB
C1	276°22'46"	22.50	108.52	---	30.00	N85°13'05"E
C2	90°00'00"	15.00	23.56	15.00	21.21	N49°46'55"W

**LOT CURVE TABLE**

NUMBER	DELTA	RADIUS	LENGTH	TANGENT	CHORD	CH. BEAR
LOT 8	48°11'23"	22.50	18.92	10.06	18.37	S28°52'37"E
LOT 9	45°00'00"	22.50	17.67	9.32	17.22	S17°43'05"W
LOT 10	45°00'00"	22.50	17.67	9.32	17.22	S62°43'05"W
LOT 11	45°00'00"	22.50	17.67	9.32	17.22	N72°16'55"W
LOT 12	45°00'00"	22.50	17.67	9.32	17.22	N27°16'55"W
LOT 13	48°11'23"	22.50	18.92	10.06	18.37	N19°18'46"E

**LINE TABLE FOR ACCESS EASEMENT**

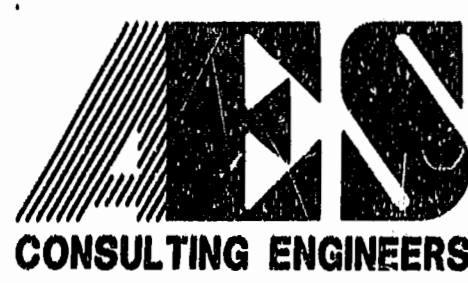
NUMBER	BEARING	DISTANCE
A	S85°13'05"W	7.50'
B	N04°46'55"W	25.38'
C	N77°55'24"W	13.08'
D	N04°46'55"W	18.71'
E	N85°13'05"E	70.00'
F	S04°46'55"E	18.71'
G	S88°21'50"W	13.08'
H	S04°46'55"E	25.38'
J	S85°13'05"W	7.50'

**LINE TABLE FOR UTILITY EASEMENT**

NUMBER	BEARING	DISTANCE
L1	N04°46'55"W	44.25'
L2	S85°13'05"W	20.00'
L3	N04°46'55"W	14.42'
L4	N85°13'05"E	23.00'
L5	N04°46'55"W	24.58'
L6	N85°13'05"E	18.00'
L7	S04°46'55"E	24.58'
L8	N85°13'05"E	23.04'
L9	S04°46'55"E	14.42'
L10	S85°13'05"W	29.04'
L11	S04°46'55"E	44.25'

PLAT RECORDED IN P.B. NO. 77 PAGE 44-46

PHASE II A, LOTS 8 - 13



5248 Olde Towne Road, Suite 1  
Williamsburg, Virginia 23188  
(757) 253-0040  
Fax (757) 220-8994

PLAT OF SUBDIVISION  
**BRANDYWYNE AT WILLIAMSBURG**  
PHASE II A, LOTS 8 - 13 AND  
PHASE I B, LOTS 70 - 80, AND RECREATION LOT  
OWNER/DEVELOPER: CONDOR PROPERTIES AT WILLIAMSBURG, L.L.C.  
CITY OF WILLIAMSBURG VIRGINIA



No.	DATE	REVISION / COMMENT / NOTE	BY
1	2/28/00	REVISED TO SHOW OFF-SITE STORM DRAINAGE EASEMENT	JFS

Designed HWP	Drawn JFS
Scale 1"=30'	Date 1/28/2000
Project No. 8453	
Drawing No. 2 of 3	