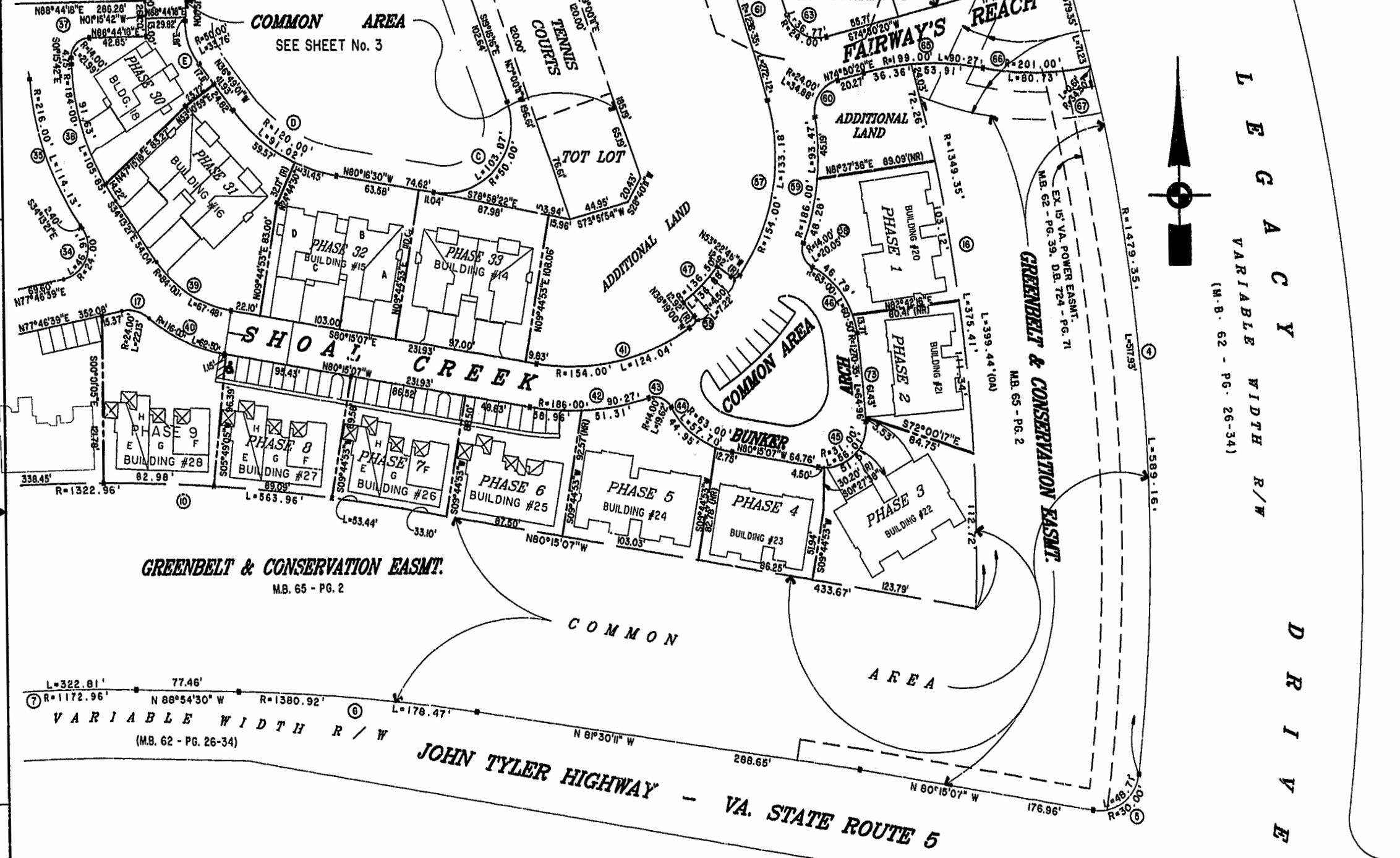


MATCH LINE SEE SHEET 4

MATCH LINE - SEE SHEET 3



LEGAL  
 VARIABLE WIDTH R/W  
 (M.B. 62 - PG. 26-34)

DRIVE

**GREENBELT & CONSERVATION EASMT.**  
 M.B. 65 - PG. 2

**VARIABLE WIDTH R/W**  
 (M.B. 62 - PG. 26-34)

**JOHN TYLER HIGHWAY - VA. STATE ROUTE 5**

Winchester/James City County  
 2:14 p.m.  
 Recorded 19th day of April 2000  
 DOCUMENT # 0000 2267  
 Stacy Suber



Hassell & Folkes, P.C. Engineers Surveyors Planners Chesapeake, VA. 23320 (757)547-9531			
SIZE	CONTRACT NO	DISK/BOX	FILENAME
C	95-079	61/16	FAIRWAY22.DWG
		REF. 10/13	FWAYPLAT.DWG
SCALE:	1" = 60'	DATE:	01/28/00
		SHEET:	2 of 6

**EXHIBIT "A" PHASE 22  
 FAIRWAYS VILLAS**  
 AT  
**GREENSPRINGS, A CONDOMINIUM**  
 FOR  
**GREENSPRINGS DEVELOPMENT, L.C.**  
 BERKELEY DISTRICT JAMES CITY COUNTY, VIRGINIA