

LINE TABLE

Table with 3 columns: NUMBER, DIRECTION, DISTANCE. Contains line data for lots L101 through L185.

LINE TABLE

Table with 3 columns: NUMBER, DIRECTION, DISTANCE. Contains line data for lots L186 through L270.

LINE TABLE

Table with 3 columns: NUMBER, DIRECTION, DISTANCE. Contains line data for lots L271 through L310.

CURVE TABLE

Table with 7 columns: NUMBER, RADIUS, DELTA, ARC, TANGENT, CHORD, CHORD BEARING. Contains curve data for lots C1 through C45.

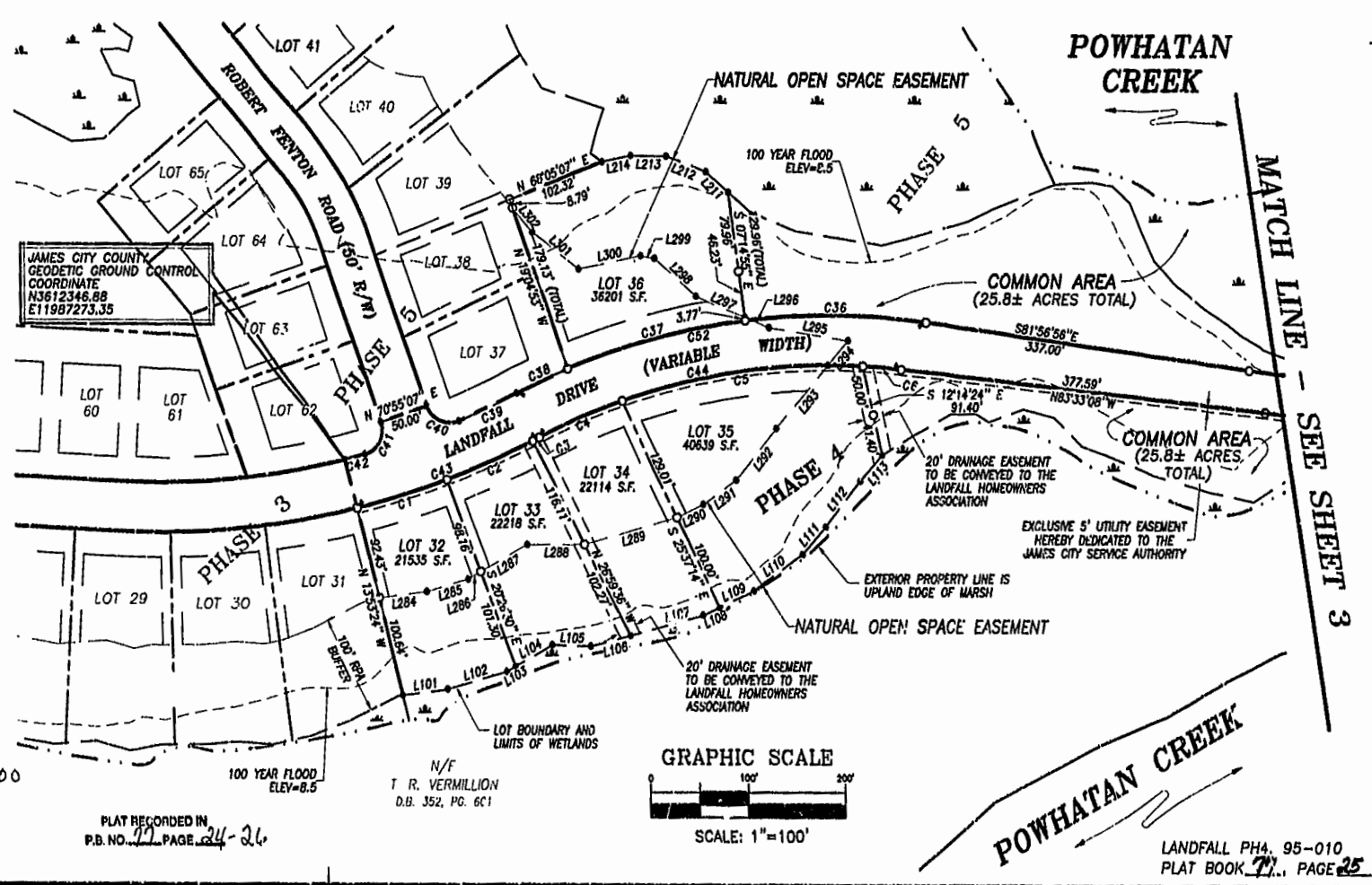
PLAT OF SUBDIVISION LANDFALL AT JAMESTOWN PHASE FOUR JAMESTOWN DISTRICT JAMES CITY COUNTY, VIRGINIA. Includes date, sheet, scale, project no., and VHB logo.

LEGEND DENOTES IRON PIN TO BE SET DENOTES LOT BOUNDARY EXTERIOR PROPERTY LINE



CURVE TABLE

Table with 7 columns: NUMBER, RADIUS, DELTA, ARC, TANGENT, CHORD, CHORD BEARING. Contains curve data for lots C46 through C52.



NOTE: NATURAL OPEN SPACE EASEMENTS SHALL REMAIN IN A NATURAL UNDISTURBED STATE EXCEPT FOR THOSE ACTIVITIES REFERENCED ON THE DEED OF EASEMENT.

Williamsburg/James City County 11:35 AM Recorded 14 day of April 2000 DOCUMENT # 00007034

PLAT RECORDED IN P.B. NO. 21 PAGE 24-26

