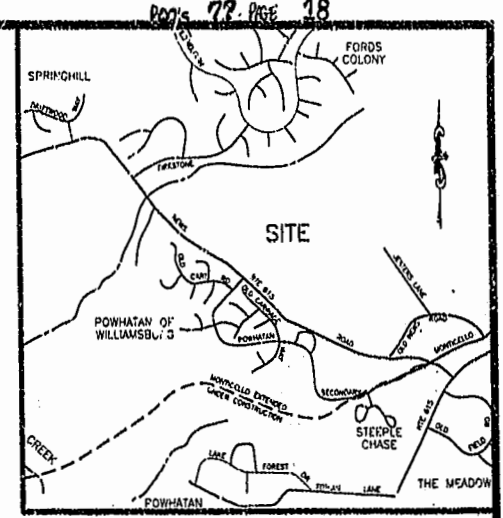


PLAT SHOWING SANITARY SEWER EASEMENT

HEREBY CONVEYED TO
JAMES CITY SERVICE AUTHORITY
 FROM
POWHATAN ENTERPRISES, INC
 JAMES CITY COUNTY, VIRGINIA
 SCALE 1" = 200' DATE: FEBRUARY 22, 2000



LINE	RADIUS	ARC	DELTA	CHORD BEARING	CHORD	TANGENT
C1	1006.74ft	718.34ft	40°52'56"	N57°38'12"W	703.20ft	375.23ft
C2	2700.19ft	336.75ft	7°08'44"	N40°48'06"W	336.53ft	168.59ft
C3	1397.39ft	503.22ft	20°37'59"	N43°47'07"W	500.50ft	254.36ft



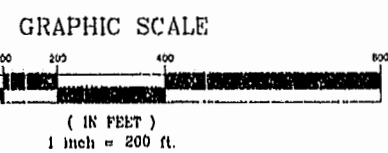
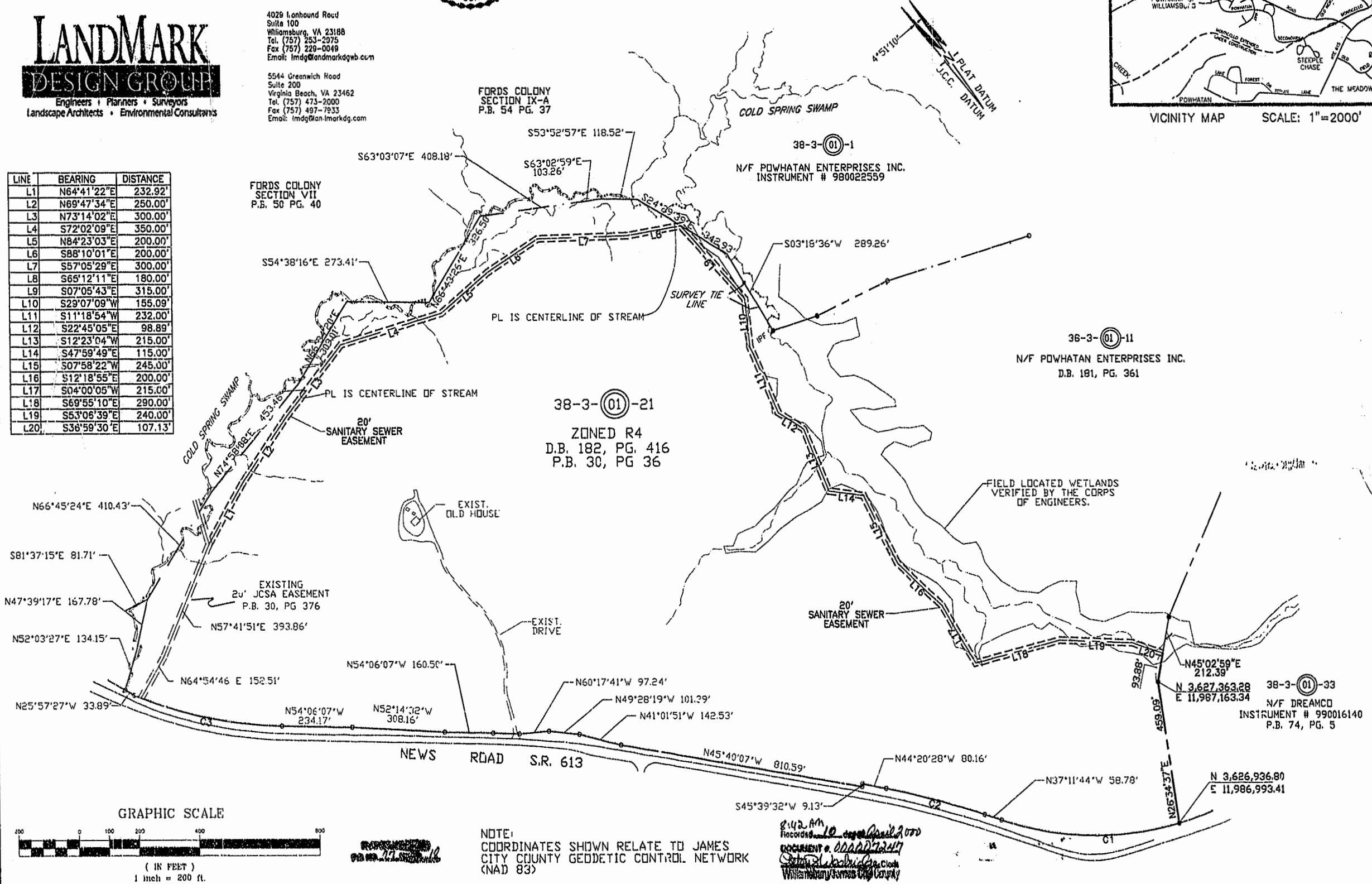
VICINITY MAP SCALE: 1"=200'

**LANDMARK
DESIGN GROUP**
 Engineers • Planners • Surveyors
 Landscape Architects • Environmental Consultants

4029 Lanhound Road
 Suite 100
 Williamsburg, VA 23188
 Tel. (757) 253-2975
 Fax (757) 229-0049
 Email: lmdg@landmarkdgb.com

5544 Greenwich Road
 Suite 200
 Virginia Beach, VA 23462
 Tel. (757) 473-2000
 Fax (757) 497-7933
 Email: lmdg@landmarkdgb.com

LINE	BEARING	DISTANCE
L1	N64°41'22"E	232.92'
L2	N69°47'34"E	250.00'
L3	N73°14'02"E	300.00'
L4	S72°02'09"E	350.00'
L5	N84°23'03"E	200.00'
L6	S88°10'01"E	200.00'
L7	S57°05'29"E	300.00'
L8	S65°12'11"E	180.00'
L9	S07°05'43"E	315.00'
L10	S29°07'09"W	155.09'
L11	S11°18'54"W	232.00'
L12	S22°45'05"E	98.89'
L13	S12°23'04"W	215.00'
L14	S47°59'49"E	115.00'
L15	S07°58'22"W	245.00'
L16	S12°18'55"E	200.00'
L17	S04°00'05"W	215.00'
L18	S69°55'10"E	290.00'
L19	S53°08'39"E	240.00'
L20	S36°59'30"E	107.13'



NOTE:
 COORDINATES SHOWN RELATE TO JAMES CITY COUNTY GEODETIC CONTROL NETWORK (NAD 83)

8:42 AM
 10
 RECORDS
 DOCUMENT # 00007247
 Stephen A. Rowe
 Williamsburg Virginia Land Surveyor