

EXIST. 20' JAMES CITY COUNTY SERVICE AUTHORITY SAN. SEWER EASEMENT AS SHOWN IN AS-BUILT LOCATION. D.B. 141 - PG. 388



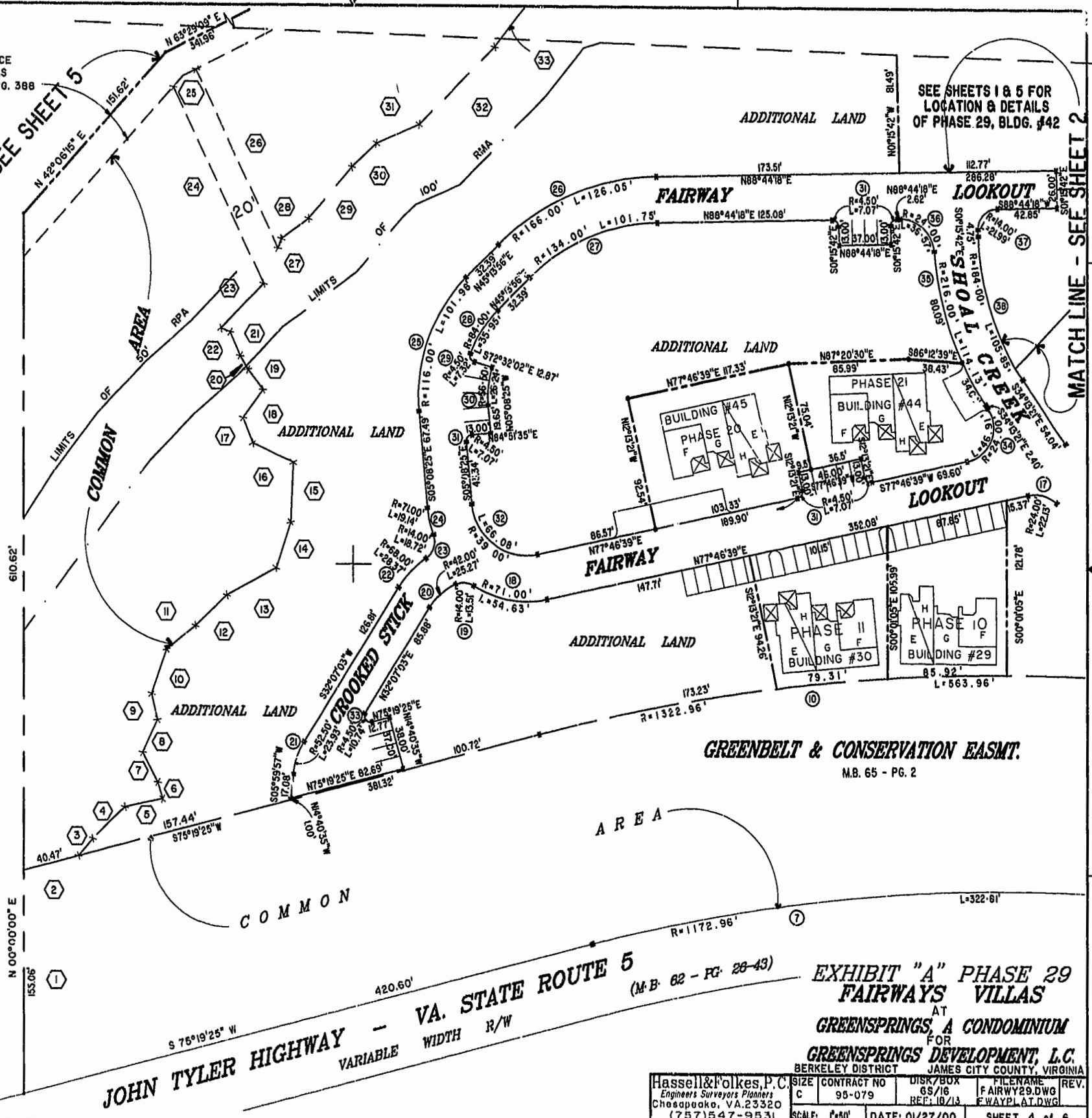
MATCH LINE - SEE SHEET 5

SEE SHEETS 1 & 5 FOR LOCATION & DETAILS OF PHASE 29, BLDG. #42

MATCH LINE - SEE SHEET 2

46-1-01-0-0001  
"GREENSPRINGS PLANTATION"  
(DB 322, PG 254)

Williamsburg/James City County  
Recorded 24 day of March  
DOCUMENT # 000025761 at 2:22 PM  
S. J. L. [Signature]



VA. STATE ROUTE 5  
JOHN TYLER HIGHWAY - VARIABLE WIDTH R/W

GREENBELT & CONSERVATION EASMT.  
M.B. 65 - PG. 2

EXHIBIT "A" PHASE 29  
FAIRWAYS VILLAS  
AT  
GREENSPRINGS, A CONDOMINIUM  
FOR  
GREENSPRINGS DEVELOPMENT, L.C.  
BERKELEY DISTRICT JAMES CITY COUNTY, VIRGINIA

Hassell & Folkes, P.C. Engineers Surveyors Planners Chesapeake, VA 23320 (757) 547-9531	SIZE C CONTRACT NO 95-079	DISK/BOX 65/16 REF: 18/13	FILENAME FAIRWAY29.DWG FWAYPLAT.DWG	REV.
SCALE: 1"=50'	DATE: 01/27/00	SHEET 4 of 6		