

**RIGHT-OF-WAY CURVE TABLE**

R/W#	DELTA	RADIUS	LENGTH	TAN	CHORD	CHORD BEARING
RW0	38°36'36"	475.00	320.09	166.39	314.07	N16°14'57"W
RW1	63°26'20"	125.00	138.40	77.26	131.44	N28°39'49"W
RW2	239°45'50"	50.00	205.74	94.51	88.39	S01°43'40"W
RW3	13°50'18"	525.00	126.80	63.71	126.49	S03°51'48"E
RW14	262°49'09"	0.00	229.35	56.69	75.00	S15°59'54"E
RW15	14°20'24"	525.00	131.40	66.04	131.05	S28°23'03"E
RW16	01°49'57"	425.00	13.59	6.80	13.59	S47°09'01"W
RW18	11°48'57"	425.00	87.65	43.98	87.49	S40°19'34"W

**LOT CURVE TABLE**

LOT#	DELTA	RADIUS	LENGTH	CHORD	TAN	CHORD BEARING
66A	14°07'19"	425.00	104.75	104.49	52.64	S67°53'10"W
66B	23°37'17"	25.00	36.49	33.33	22.36	N77°21'52"W
66C	09°47'27"	475.00	81.14	81.04	40.07	N30°39'37"W
67	15°50'60"	475.00	131.40	130.98	66.12	N17°30'30"W
68A	12°58'21"	475.00	107.55	107.32	54.00	N03°25'49"W
68B	08°51'42"	125.00	19.33	19.31	9.69	N01°22'30"W
69	38°20'42"	125.00	83.66	82.10	43.46	N24°58'42"W
70	16°13'58"	125.00	35.41	35.29	17.83	N52°16'01"W
71	42°48'50"	50.00	37.36	36.50	19.60	N81°47'50"W
72	56°19'02"	50.00	49.15	47.19	26.76	S48°38'14"W
73	59°22'47"	50.00	51.82	49.53	28.51	S09°12'40"E
74A	50°19'43"	50.00	43.92	42.52	23.49	N89°00'37"E
74B	97°10'51"	50.00	84.61	75.00	56.69	S67°33'49"E
74C	22°01'45"	75.00	28.84	28.66	14.60	S07°57'31"E
74D	05°49'42"	525.00	53.40	53.39	26.73	S00°08'50"W
75A	08°00'36"	525.00	73.40	73.34	35.76	S06°46'39"E
75B	84°47'03"	25.00	36.99	33.71	22.82	S31°36'35"W
75C	41°24'35"	50.00	36.14	35.36	18.90	N85°17'37"W
76	63°29'03"	50.00	55.40	52.61	30.93	S83°40'09"W
77	50°40'14"	50.00	44.22	42.79	23.67	S26°35'31"W
78	50°40'11"	50.00	44.22	42.79	23.67	S24°04'42"E
79	66°13'00"	50.00	57.79	54.62	32.61	S82°31'17"E
80A	31°46'41"	50.00	27.73	27.38	14.23	N40°28'52"E
80B	41°24'35"	50.00	36.14	35.36	18.90	N53°17'49"E
80C	84°47'03"	25.00	36.99	33.71	22.82	S63°36'23"E
80D	08°00'32"	525.00	73.38	73.32	36.75	S25°13'07"E
81A	06°19'52"	525.00	58.01	57.98	29.04	S32°23'19"E
81B	83°37'14"	25.00	36.49	33.33	22.36	S06°15'22"W
81C	13°38'54"	425.00	101.24	101.00	50.86	S41°14'32"W

**GREEN SPACE CURVE TABLE**

GS#	DELTA	RADIUS	LENGTH	CHORD	TAN	CHORD BEARING
GS4	26°55'28"	50.00	23.50	23.28	11.97	S52°21'48"E

**LINE TABLE**

NUMBER	BEARING	DISTANCE
L32	N13°18'28"E	77.36'
L33	N47°37'31"E	90.10'
L34	S27°51'41"E	18.82'
L35	N23°54'54"E	82.36'
L36	N25°54'56"W	29.04'
L37	N33°50'19"E	86.15'
L38	N00°58'18"E	51.94'
L39	N26°30'35"E	66.15'
L40	N14°04'48"E	35.86'
L41	N75°33'43"E	121.80'
L42	N48°32'54"E	42.08'
L43	S61°58'58"E	71.67'
L44	S69°34'40"E	82.49'
L45	S88°51'52"E	136.25'
L46	N75°03'41"E	48.63'
L47	S88°28'48"E	35.64'

**GREEN SPACE AREA TABULATION**

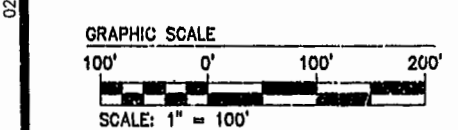
LOT	SQUARE FEET	ACRES
GS #1	6,774	0.155
GS #2	7,772	0.178
GS #3	12,118	0.278
GS #4	11,516	0.264
GS #5	157,793	3.622
GS #6	319,466	7.334

**LINE TABLE**

NUMBER	BEARING	DIST
L3	N35°33'15"W	18.38'
L4	N50°22'59"W	45.55'
L5	N60°22'59"W	20.00'
L6	S35°33'15"E	18.38'

**AREA TABULATION**

	S.F.	AC.
TOTAL AREA OF RESIDENTIAL LOTS	1,384,312	31.779
TOTAL AREA OF R/W	182,282	4.185
TOTAL AREA OF GREEN SPACE	515,440	11.833
TOTAL AREA OF CEMETERY	27,634	0.634
TOTAL AREA OF SECTION XXXI (LOTS 36-81)	2,109,668	48.431
TOTAL NUMBER OF LOTS	46	
AVERAGE LOT SIZE	30,094	0.691
SMALLEST LOT (#51)	14,912	0.342
LARGEST LOT (#77)	92,045	2.113
GROSS LOTS PER ACRE	0.950 LOTS/ACRE	



ROAD RECONSTRUCTION PER PLAN REVISION 8/1/89

**LINE TABLE**

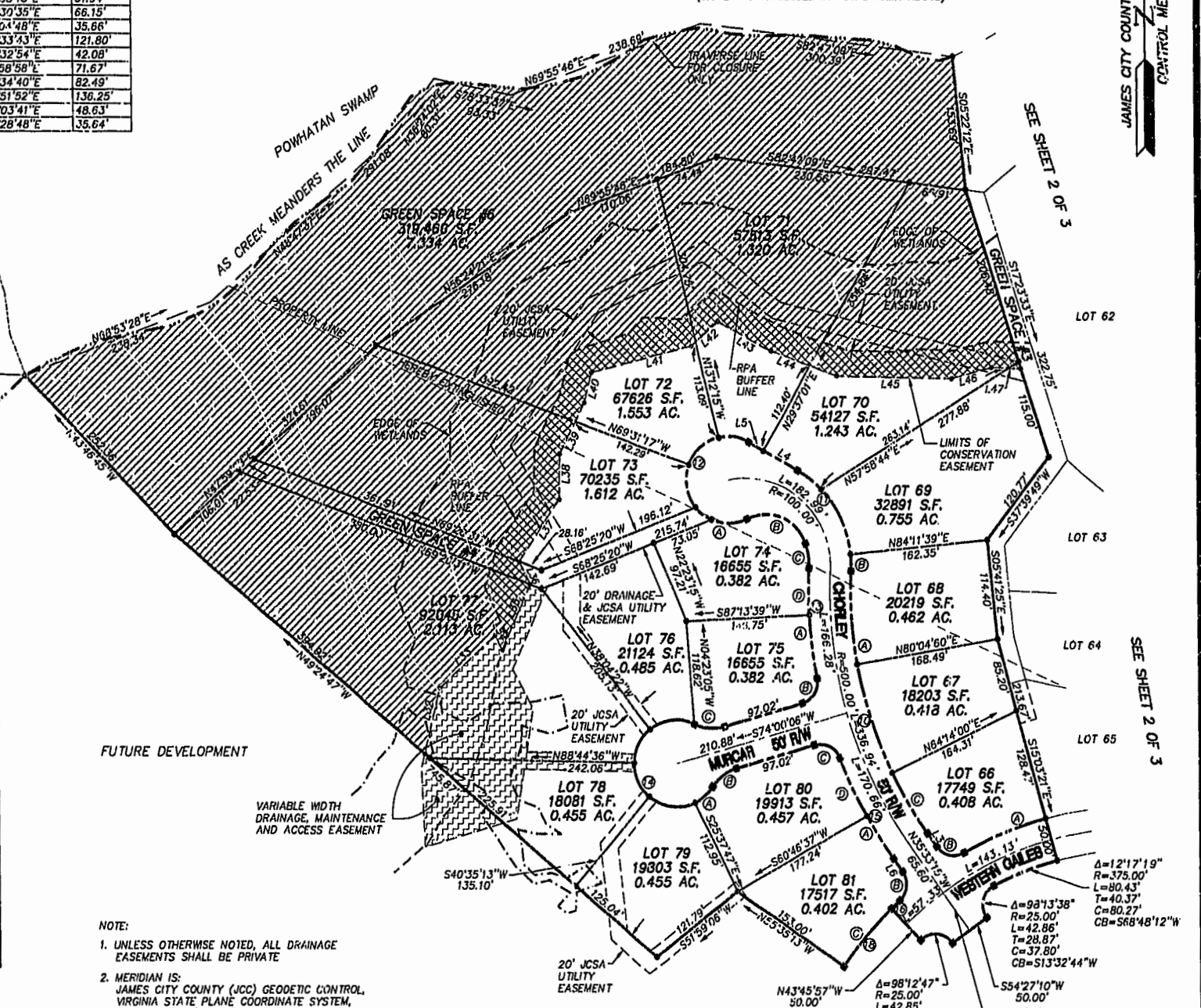
NUMBER	BEARING	DISTANCE
L32	N13°18'28"E	77.36'
L33	N47°37'31"E	90.10'
L34	S27°51'41"E	18.82'
L35	N23°54'54"E	82.36'
L36	N25°54'56"W	29.04'
L37	N33°50'19"E	86.15'
L38	N00°58'18"E	51.94'
L39	N26°30'35"E	66.15'
L40	N14°04'48"E	35.86'
L41	N75°33'43"E	121.80'
L42	N48°32'54"E	42.08'
L43	S61°58'58"E	71.67'
L44	S69°34'40"E	82.49'
L45	S88°51'52"E	136.25'
L46	N75°03'41"E	48.63'
L47	S88°28'48"E	35.64'

N/F FORD'S COLONY COUNTRY CLUB, INC.  
DB B22; PG. 712  
TM (30-4)(1-2)

VARIABLE WIDTH CONSERVATION EASEMENT HEREBY DEDICATED TO THE FORD'S COLONY HOMEOWNERS ASSOCIATION. (19.525 AC.± TOTAL)

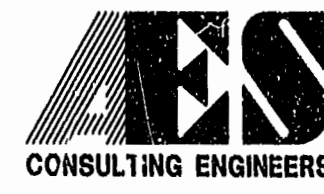
VARIABLE WIDTH CONSERVATION EASEMENT HEREBY DEDICATED TO THE FORD'S COLONY HOMEOWNERS ASSOCIATION. SAID AREA IS ALSO A CONSERVATION EASEMENT HEREBY DEDICATED TO JAMES CITY COUNTY. (1.352 AC.± INCLUDED IN TOTAL AREA ABOVE)

JAMES CITY COUNTY GEODETIC CONTROL MERIDIAN



- NOTE:
- UNLESS OTHERWISE NOTED, ALL DRAINAGE EASEMENTS SHALL BE PRIVATE
  - MERIDIAN IS: JAMES CITY COUNTY (JCC) GEODETIC CONTROL, VIRGINIA STATE PLANE COORDINATE SYSTEM, SOUTH ZONE, (NAD83)
  - WHERE APPROPRIATE LOTS AND GREENWAY AREAS INCLUDE CONSERVATION EASEMENT.

(THIS SHEET LOTS 66-81)



2548 Olde Towne Road, Suite 1  
Williamsburg, Virginia 23188  
(757) 253-0040  
Fax (757) 220-8994

PLAT OF SUBDIVISION AND LOT LINE EXTINGUISHMENT  
SECTION XXXI  
LOTS 36 - 81  
**FORD'S COLONY  
@ WILLIAMSBURG**  
BERKELEY DISTRICT JAMES CITY COUNTY VIRGINIA



Williamsburg/James City County

2/8/00	REVISOR	JFS	
1	2/8/00	REVISOR	
No.	DATE	REVISION / COMMENT / NOTE	BY

Designed CAH/DPW	Drawn PMM
Scale 1"=100'	Date 1/10/2000
Project No. 5662-31	
Drawing No. 3 OF 3	