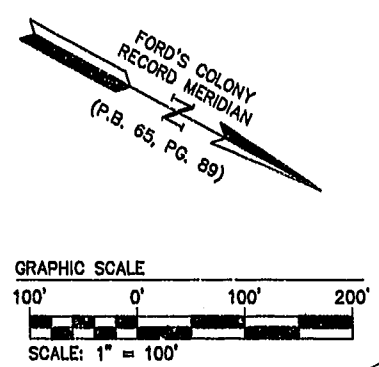


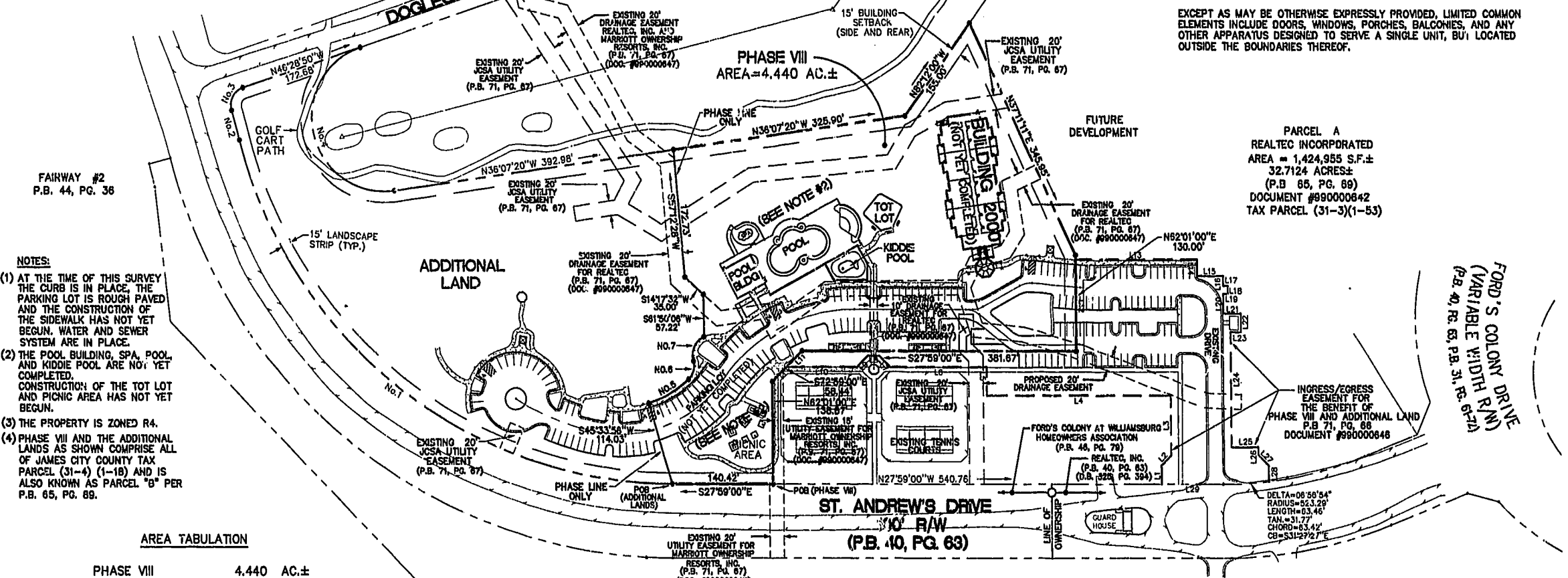
LOCATION MAP 1" = 4000'



THE LINKS I & II
P.B. 43, PG. 8-11
P.B. 43, PG. 13-18

SURVEYOR'S CERTIFICATE
THE UNDERSIGNED, A LICENSED LAND SURVEYOR, DOES HEREBY CERTIFY THAT THIS PLAT IS ACCURATE AND COMPLIES WITH THE PROVISIONS OF VA. CODE ANN. SUBSECTIONS 65-78.58 A, C AND F. ALL UNITS DEPICTED HEREON ARE NOT YET COMPLETED; IT BEING UNDERSTOOD THAT SUCH UNITS ARE BEING SUBJECTED TO A TIME-SHARE INSTRUMENT PURSUANT TO VA. CODE ANN. SECTION 65-367 AND THUS VA. CODE ANN. SUBSECTION 65-78.58 D APPLIES.
A.D. Sebert 10/20/99
A. D. SEBERT, I.S. DATE

CE- COMMON ELEMENTS
COMMON ELEMENTS INCLUDE ALL PORTIONS OF THE CONDOMINIUM OTHER THAN THE UNITS SHOWN AND DESIGNATED HEREON AND DEFINED IN THE CONDOMINIUM DOCUMENTS AND THE LIMITED COMMON ELEMENTS. EXAMPLES OF COMMON ELEMENTS ARE: PARKING, PAVED AREAS, THE GROUNDS (WHETHER OR NOT LANDSCAPED), ALL PORTIONS OF THE BUILDINGS NOT A PART OF THE UNIT NOW DEFINED AS LIMITED COMMON ELEMENTS, AND ALL CO-UTILITIES, INSTALLATIONS, WIRES, PIPES, EQUIPMENT, ETC. WHICH SERVE OTHER COMMON ELEMENTS OR WHICH SERVE MORE THAN ONE UNIT.
LCE- LIMITED COMMON ELEMENTS
EXCEPT AS MAY BE OTHERWISE EXPRESSLY PROVIDED, LIMITED COMMON ELEMENTS INCLUDE DOORS, WINDOWS, PORCHES, BALCONIES, AND ANY OTHER APPARATUS DESIGNED TO SERVE A SINGLE UNIT, BUT LOCATED OUTSIDE THE BOUNDARIES THEREOF.



- NOTES:**
- (1) AT THE TIME OF THIS SURVEY THE CURB IS IN PLACE, THE PARKING LOT IS ROUGH PAVED AND THE CONSTRUCTION OF THE SIDEWALK HAS NOT YET BEGUN. WATER AND SEWER SYSTEM ARE IN PLACE.
 - (2) THE POOL BUILDING, SPA, POOL AND KIDDEE POOL ARE NOT YET COMPLETED. CONSTRUCTION OF THE TOT LOT AND PICNIC AREA HAS NOT YET BEGUN.
 - (3) THE PROPERTY IS ZONED R4.
 - (4) PHASE VIII AND THE ADDITIONAL LANDS AS SHOWN COMPRISE ALL OF JAMES CITY COUNTY TAX PARCEL (31-4) (1-18) AND IS ALSO KNOWN AS PARCEL "B" PER P.B. 65, PG. 89.

PARCEL A
REALTEC INCORPORATED
AREA = 1,424,955 S.F. ±
32.7124 ACRES ±
(P.B. 85, PG. 89)
DOCUMENT #990000842
TAX PARCEL (31-3)(1-53)

FORD'S COLONY DRIVE (N) (VARIABLE WIDTH R/W) (P.B. 40, PG. 63, P.B. 51, PG. 67-71)

AREA TABULATION

PHASE VIII	4.440	AC. ±
ADDITIONAL LAND	4.601	AC. ±
TOTAL AREA	9.041	AC. ±

PARKING TABULATION
(INCLUDES ONLY SPACES LYING ENTIRELY ON PHASE VIII AND ADDITIONAL LAND)

PHASE VIII	83 SPACES (INCLUDING 4 HANDICAPPED)
TOTAL	117 SPACES (INCLUDING 6 HANDICAPPED)

CURVE TABLE (ADDITIONAL LAND)

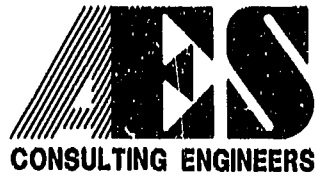
NUMBER	DELTA	RADIUS	LENGTH	TANGENT	CHORD	CH. BEAR
No.1	78°38'00"	618.23	918.09	479.84	758.12	S09°50'00"W
No.2	01°53'57"	1250.00	41.43	20.72	41.43	S48°42'03"W
No.3	87°46'06"	25.00	38.30	24.05	34.66	S89°38'05"W
No.4	169°38'33"	100.00	296.08	1103.35	199.18	N48°41'56"E

CURVE TABLE (PHASE VIII)

NUMBER	DELTA	RADIUS	LENGTH	TANGENT	CHORD	CH. BEAR
No.5	28°48'05"	139.37	88.19	33.21	84.60	N87°50'07"W
No.6	82°21'24"	25.00	27.21	15.13	25.89	S77°34'36"W
No.7	78°48'33"	28.00	39.00	23.42	35.02	S86°18'10"W

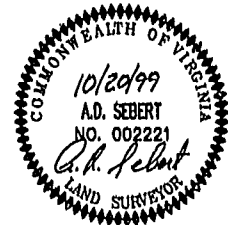
L14	N62°01'00"E	22.18'
L15	N27°59'00"W	36.44'
L16	N62°01'00"E	13.24'
L17	N27°59'00"W	6.88'
L18	N62°01'00"E	11.00'
L19	S27°59'00"E	6.88'
L20	N62°01'00"E	26.54'
L21	N27°59'00"W	24.00'
L22	N62°01'00"E	23.00'
L23	S27°59'00"E	14.00'
L24	N62°01'00"E	155.93'
L25	N27°59'00"W	36.84'
L26	N62°01'00"E	10.08'
L27	N17°01'00"E	21.82'
L28	N62°31'00"E	21.52'
L29	S27°59'00"E	66.44'

MARRIOTT'S MANOR CLUB AT FORD'S COLONY
MARRIOTT OWNERSHIP RESORTS, INC.
P.B. 53/27
PB 57/42
PB 57/43-51



5248 Olde Towne Road, Suite 1
Williamsburg, Virginia 23188
(757) 253-0040
Fax (757) 220-8994

EXHIBIT A-2
PLAT OF CONDOMINIUM MANOR CLUB AT FORD'S COLONY PHASE VIII
OWNER/DEVELOPER: MARRIOTT OWNERSHIP RESORTS, INC.
POWhatan DISTRICT JAMES CITY COUNTY VIRGINIA



PLAT RECORDED IN	Recorded 23 day of Feb, 2000		
P.B. NO. 116 PAGE 67-70	DOCUMENT # 200009536		
No.	DATE	REVISION / COMMENT / NOTE	BY

Designed	Crawn
ADS	JFS
Scale	Date
1" = 100'	10/20/99
Project No.	
7739-11	
Drawing No.	
1 OF 10	

11.16.99-10:13 7739MCP1.DWG JFS