

SECOND AMENDED PLAT OF SUBDIVISION
LANDFALL
AT
JAMESTOWN
LOTS 21 & 22 PHASE THREE
JAMESTOWN DISTRICT
JAMES CITY COUNTY, VIRGINIA

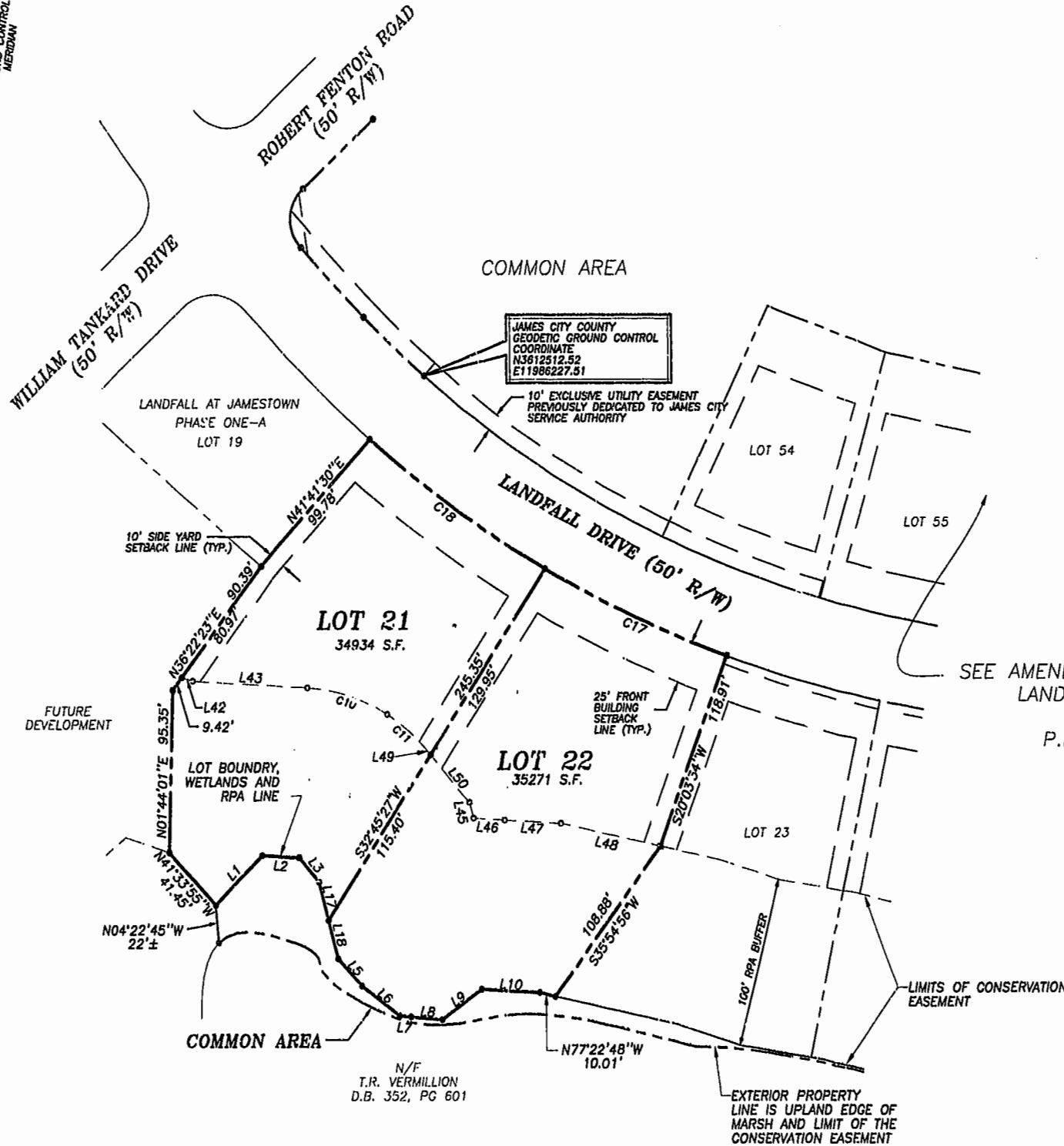
DATE: 1/27/00 SHEET 2 OF 2 SCALE: 1"=50'

PROJECT NO: 30803.00 DRAWN BY: DWP

VHB Vanasse Hangen Brustlin, Inc.
Transportation Land Development Environmental Services
11832 Rock Landing Drive, Suite 203
Newport News, Virginia 23606
(757) 873-3336 • FAX (757) 873-0757

FILE NO. 95-010

VDOT STATE ROUTE 31
PROJ. # 031-2847-03-05
00'06'48"
JAMES CITY COUNTY
GROUND CONTROL
MERIDIAN



LINE TABLE

NUMBER	DIRECTION	DISTANCE
L1	S43°53'29"W	40.51'
L2	N86°41'51"W	22.53'
L3	N39°52'00"W	18.48'
L5	N41°38'58"W	21.23'
L6	N52°04'38"W	28.86'
L7	N84°48'59"W	8.93'
L8	N84°48'59"W	18.90'
L9	S53°16'44"W	29.97'
L10	N86°44'55"W	35.08'
L11	N77°22'48"W	40.01'
L14	S80°19'58"E	43.22'
L15	S80°19'58"E	8.51'
L16	S76°15'26"E	50.09'
L17	N13°58'38"W	23.21'
L18	N13°58'38"W	23.21'
L42	S70°34'03"E	8.71'
L43	S86°41'51"E	69.14'
L45	S13°58'38"E	9.43'
L46	S86°44'55"E	19.11'
L47	S86°44'55"E	33.92'
L48	S77°22'48"E	61.27'
L49	S39°52'00"E	4.90'
L50	S39°52'00"E	36.57'

SEE AMENDED PLAT OF SUBDIVISION
LANDFALL AT JAMESTOWN
PHASE THREE
P.B. 73, PG 80-83

CURVE DATA

NUMBER	RADIUS	DELTA	ARC	TANGENT	CHORD	CHORD BEARING
C10	100.00'	29°21'01"	51.23'	28.19'	50.67'	S72°01'20"E
C11	100.00'	17°28'50"	30.51'	15.37'	30.36'	S48°38'25"E
C17	875.00'	10°13'45"	120.51'	60.42'	120.35'	S64°49'33"E
C18	875.00'	11°03'14"	130.23'	65.32'	130.02'	S54°11'04"E

LEGEND

- DENOTES IRON PIN TO BE SET
- DENOTES PROPERTY LINE AND CONSERVATION EASEMENT

10:33 AM
Received 15 day of February 2000
DOCUMENT # 00003013
Clerk

GRAPHIC SCALE



SCALE: 1"= 50'

RECORDED NO
P.B. NO. 76 PAGE 64 & 65