

NOTE:
 REALTEC INCORPORATED AND/OR THEIR ASSIGNS HEREBY RESERVE EASEMENT OVER, UNDER AND THROUGH ALL THE LOTS OF THE FORD'S COLONY AT WILLIAMSBURG HOMEOWNERS ASSOCIATION THAT MAY BE NECESSARY FROM TIME TO TIME TO FURTHER DEVELOPMENT OF THE PROPERTY AND THE INSTALLATION OF SIGNAGE AND LANDSCAPING. FURTHERMORE, THE FOREMENTIONED RESERVE THE RIGHT WITHIN SAID HOMEOWNERS' LANDS TO CONSTRUCT AND MAINTAIN ACCESSORY AMENITY BUILDINGS. SUCH PROPERTY IS ALSO SUBJECT TO THE EASEMENTS, RIGHTS AND LIMITATIONS DESCRIBED IN THE DECLARATION OF PROTECTIVE COVENANTS FOR FORD'S COLONY OR IN SUPPLEMENTS THERETO.

EXISTING PLATTED EASEMENTS FOR UTILITIES AND DRAINAGE OVER THE LANDS OF THE FORD'S COLONY AT WILLIAMSBURG HOMEOWNERS ASSOCIATION SHOWN HEREON ARE NOT SHOWN FOR PURPOSES OF CLARITY. REFERENCE IS HEREBY MADE TO THE LAND RECORDS OF JAMES CITY COUNTY FOR MORE EXACT INFORMATION RELATING TO EASEMENT LOCATIONS AND USE.

AREA TABULATION OF THE LANDS OF THE FORD'S COLONY AT WILLIAMSBURG HOMEOWNERS ASSOCIATION

SECTION III B (LOTS 1-25)	WHERE RECORDED	DESCRIPTION	AREA
SECTION III B LOTS 1-11, & 22-25	P.B. 65, PG. 19-20	ROAD RIGHT-OF-WAY	2.301 AC.±
SECTION III B LOTS 12-21	P.B. 66, PG. 17-18	ROAD RIGHT-OF-WAY	0.746 AC.±
LOTS 1-11, & 22-25	P.B. 65, PG. 19-20	GREENWAYS	0.189 AC.±

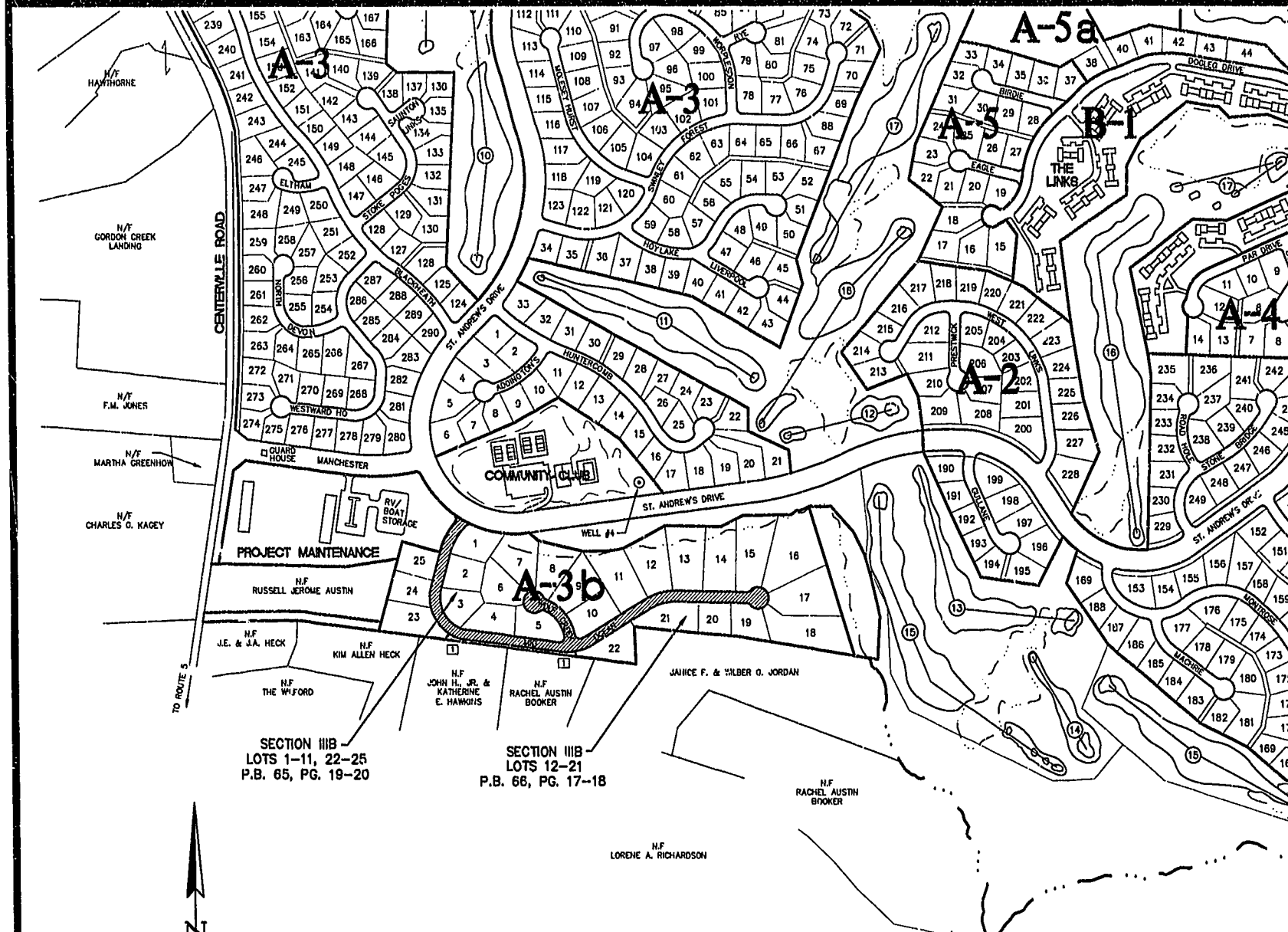
SUMMARY OF PREVIOUS PLATS OF THE FORD'S COLONY AT WILLIAMSBURG HOMEOWNERS ASSOCIATION

SECTION	WHERE RECORDED	DESCRIPTION
SECTION 1, 2, 4, 5	P.B. 48, PG. 79	D.B. 368, PG. 584
SECTION 3	P.D. 48, PG. 96	D.B. 395, PG. 787
SECTION 6, LOTS 1-117	P.B. 52, PG. 39	D.B. 477, PG. 35
SECTION 10	P.B. 52, PG. 38	D.B. 477, PG. 35
SECTION 6, LOTS 118-265; SECTION 11A, LOTS 70-156	P.B. 53, PG. 60	D.B. 504, PG. 124
SECTION 11A, LOTS 1-89	P.B. 54, PG. 87	D.B. 529, PG. 74
SECTION 7	P.B. 55, PG. 49	D.B. 548, PG. 299
SECTION 9A	P.B. 68, PG. 75-76	DOC. #980004672
SECTION 9B	P.B. 58, PG. 43	D.B. 647, PG. 395
SECTION 13C, D, E	P.B. 61, PG. 56	D.B. 734, PG. 740
SECTION 13C	P.B. 68, PG. 75-76	DOC. #980004672
SECTION 16, LOTS 7-84	P.B. 68, PG. 75-76	DOC. #980004672

TOTAL AREA OF ROAD RIGHT-OF-WAYS	238.31 AC.±
TOTAL AREA OF GREENWAYS	69.92 AC.±
TOTAL AREA OF THE LANDS OF THE FORD'S COLONY AT WILLIAMSBURG HOMEOWNERS ASSOCIATION (AS SUMMARIZED AT P.B. 66, PG. 75-76)	308.23 AC.±

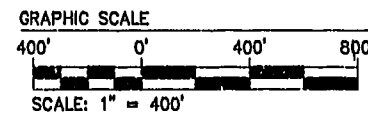
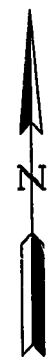
TOTAL AREA TO DATE SUMMARY OF THE LANDS OF THE FORD'S COLONY AT WILLIAMSBURG HOMEOWNERS ASSOCIATION (INCLUDES ALL PREVIOUS PLATS)

TOTAL AREA OF ROAD RIGHT-OF-WAYS	250.37 AC.±
TOTAL AREA OF GREENWAYS	72.73 AC.±
TOTAL AREA OF THE LANDS OF THE FORD'S COLONY AT WILLIAMSBURG HOMEOWNERS ASSOCIATION	323.10 AC.±



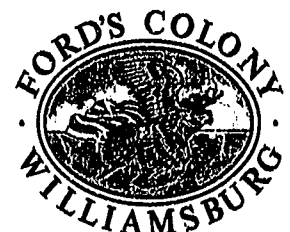
SECTION III B
 LOTS 1-11, 22-25
 P.B. 65, PG. 19-20

SECTION III B
 LOTS 12-21
 P.B. 66, PG. 17-18

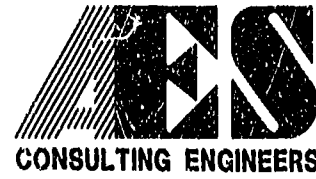


LEGEND

	GREENWAY AREA
	ROAD RIGHT-OF-WAYS
	INDICATES GREENWAY



9:43 AM
 Recorded 2 day of February 2000
 DOCUMENT # 00002031
 Peter B. Woodhull, Clerk
 By Claudia H. Birchley, Dep. Clerk



5248 Olde Towne Road, Suite 1
 Williamsburg, Virginia 23188
 (757) 253-0040
 Fax (757) 220-8994

MAP OF ADDITIONAL LANDS OF
THE FORD'S COLONY
 AT WILLIAMSBURG
 HOMEOWNERS ASSOCIATION

POWhatan DISTRICT JAMES CITY COUNTY VIRGINIA



No.	DATE	REVISION / COMMENT / NOTE	BY
1	1/07/2000	REVISED TO SHOW GREENWAY NUMBERS AND NEW AREAS	JFS

Designed SOW	Drawn HBK
Scale 1"=400'	Date 4/14/99
Project No. 5652-3B	
Drawing No. 1 OF 2	

01.11.00-08:51 FC170901.dwg JFS