

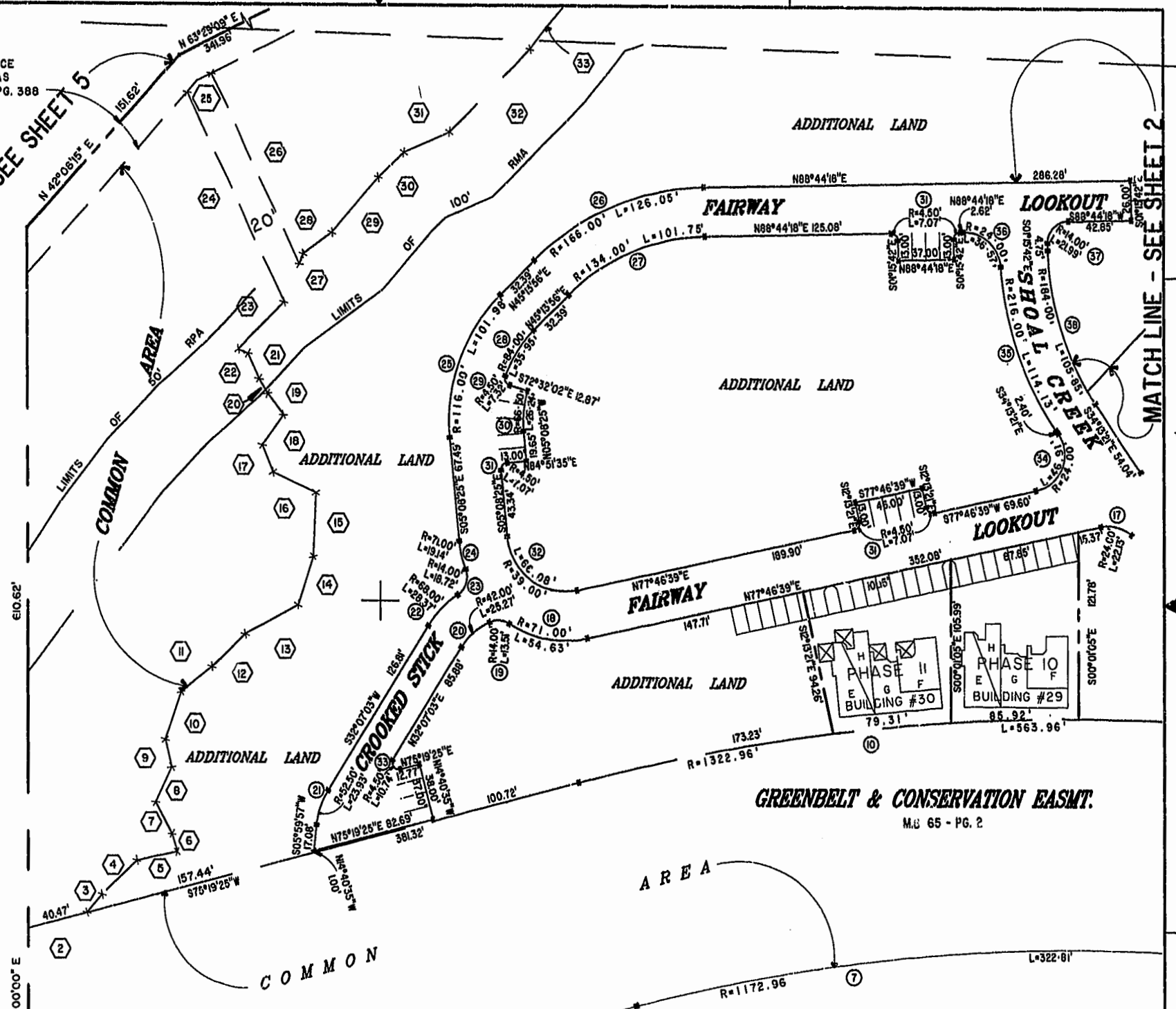
EXIST. 20' JAMES CITY COUNTY SERVICE
 AUTHORITY SAN. SEW. ASSESSMENT AS
 SHOWN IN A6-BUILT LOCALITY, D.B. 141 - PG. 388



MATCH LINE - SEE SHEET 5

MATCH LINE - SEE SHEET 2

46-1-01-0-0001
 "GREENSPRINGS PLANTATION"
 (DB 322, PG 254)



JOHN TYLER HIGHWAY - VA. STATE ROUTE 5
 VARIABLE WIDTH R/W
 420.60'
 S 75°19'25" W
 R=1172.96
 PLAT RECORDED IN P.B. NO. 76 FROM 6557
 Recorded 28 day of January 2000
 DOCUMENT # 002201735
 Hassell & Polkes, P.C.
 Engineers Surveyors Planners
 Chesapeake, VA, 23320
 (757) 547-9531

EXHIBIT "A" PHASE 40
 FAIRWAYS VILLAS
 AT
 GREENSPRINGS, A CONDOMINIUM
 FOR
 GREENSPRINGS DEVELOPMENT, L.C.
 BERKELEY DISTRICT JAMES CITY COUNTY, VIRGINIA
 SIZE CONTRACT NO DISK/BOX FILENAME REV.
 C 95-079 60/16 FAIRWAY40DWG
 REF: 18/13 EWAYPLAT.DWG
 SCALE: 1"=50' DATE: 08/03/99 SHEET 4 of 6