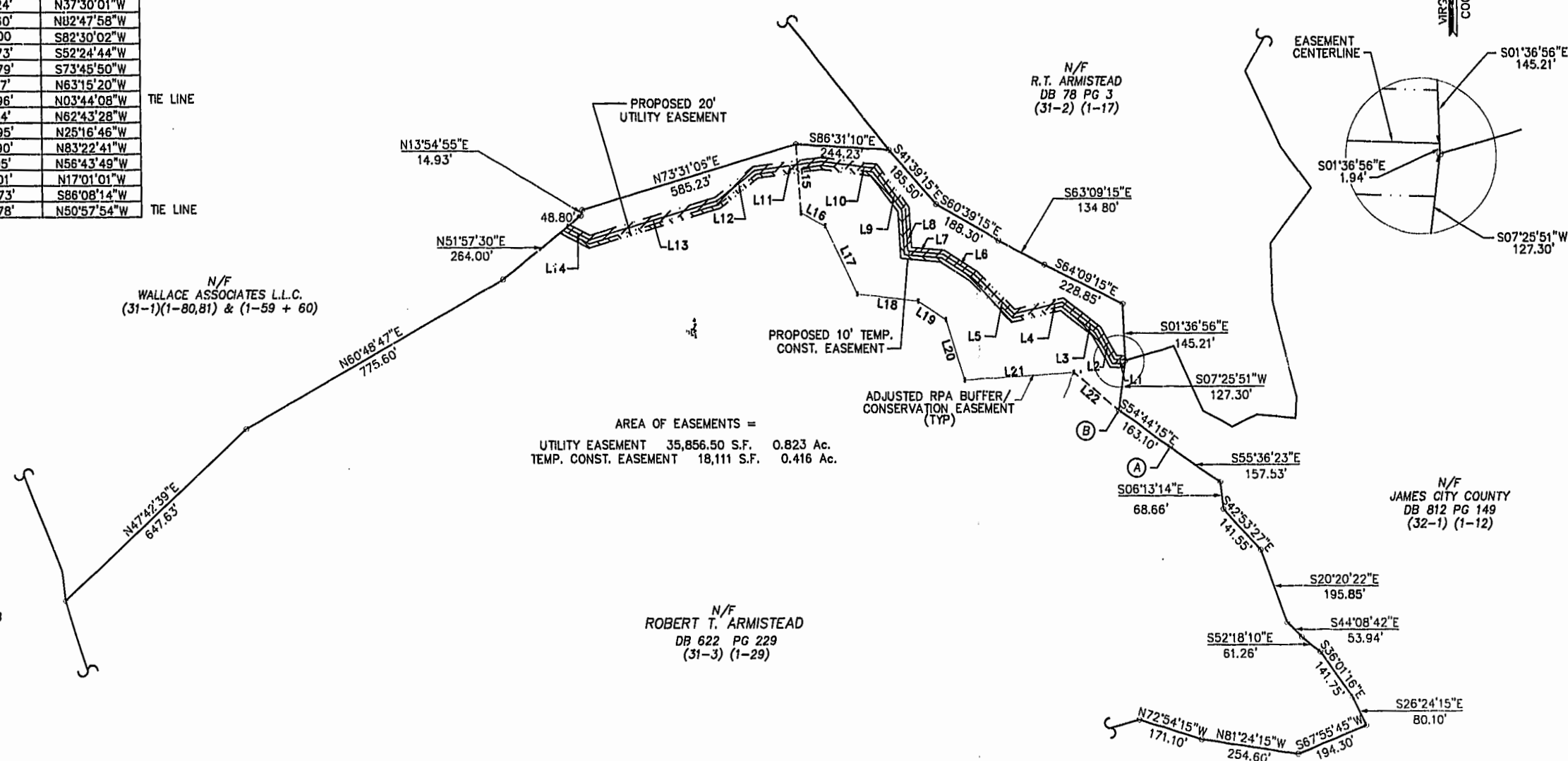


| LINE | LENGTH | BEARING |
|------|---------|-------------|
| L1 | 26.86' | N88°19'36"W |
| L2 | 86.82' | N30°04'27"W |
| L3 | 117.11' | N52°16'49"W |
| L4 | 130.88' | S77°12'15"W |
| L5 | 143.46' | N46°38'10"W |
| L6 | 96.46' | N57°36'59"W |
| L7 | 93.75' | N84°40'38"W |
| L8 | 107.42' | N03°02'23"W |
| L9 | 130.24' | N37°30'01"W |
| L10 | 142.60' | N02°47'58"W |
| L11 | 174.00' | S82°30'02"W |
| L12 | 126.73' | S52°24'44"W |
| L13 | 348.79' | S73°45'50"W |
| L14 | 67.97' | N63°15'20"W |
| L15 | 174.96' | N03°44'08"W |
| L16 | 72.84' | N62°43'28"W |
| L17 | 190.95' | N25°16'46"W |
| L18 | 161.90' | N83°22'41"W |
| L19 | 86.95' | N56°43'49"W |
| L20 | 161.01' | N17°01'01"W |
| L21 | 288.73' | S86°08'14"W |
| L22 | 152.78' | N50°57'54"W |

TIE LINE
TIE LINE



AREA OF EASEMENTS =
 UTILITY EASEMENT 35,856.50 S.F. 0.823 Ac.
 TEMP. CONST. EASEMENT 18,111 S.F. 0.416 Ac.

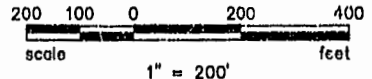
N/F
FISCELLA
DB 563 PG 188
MB 64 PG 24
(31-1) (1-82)

N/F
WALLACE ASSOCIATES L.L.C.
(31-1)(1-80,81) & (1-59 + 60)

N/F
ROBERT T. ARMISTEAD
DB 622 PG 229
(31-3) (1-29)

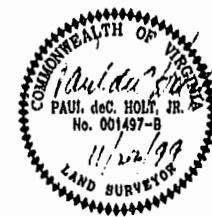
N/F
JAMES CITY COUNTY
DB 812 PG 149
(32-1) (1-12)

NOTE:
THE BEARINGS SHOWN ON THIS PLAT ARE BASED ON THE DIRECTION OF THE LINE FROM POINT (A) TO (B) DETERMINED FROM THE PLAT OF JAMES CITY COUNTY SERVICE AUTHORITY AS SHOWN IN DB 812 PG 149 AND LOCATED FROM CONTROL ON NAD 83.



1:39 PM
Recorded 21 day of January 2000
DOCUMENT # 00001428
[Signature]

PLAT RECORDED IN
P.B. NO. 76 PAGE 40



| | | | |
|---|--|---|--|
| PHR&A A Professional Corporation Engineers, Surveyors, Planners and Landscape Architects Bridgewater-Leesburg-Virginia Beach-Chantilly & Winchester Va. | | PATTON HARRIS RUST & ASSOCIATES, PC 4542 BONNEY ROAD VIRGINIA BEACH, VIRGINIA 23462 (757) 497-7472 FAX (757) 497-0250 | |
| SURVEY: PHRA FILE NAME: PLAT3.DWG CHECKED: WHB DRAWN: JLS DATE: 11/22/99 PROJECT NO: 10455-1-0 | | PLAT SHOWING PROPOSED 20' UTILITY EASEMENT & PROPOSED 10' TEMP. CONST. EASEMENT TO BE CONVEYED TO THE JAMES CITY SERVICE AUTHORITY FROM ROBERT T. ARMISTEAD POWIATAN DISTRICT JAMES CITY COUNTY, VIRGINIA | |
| SCALE: 1" = 200' | | SHEET: 1 OF 1 | |