

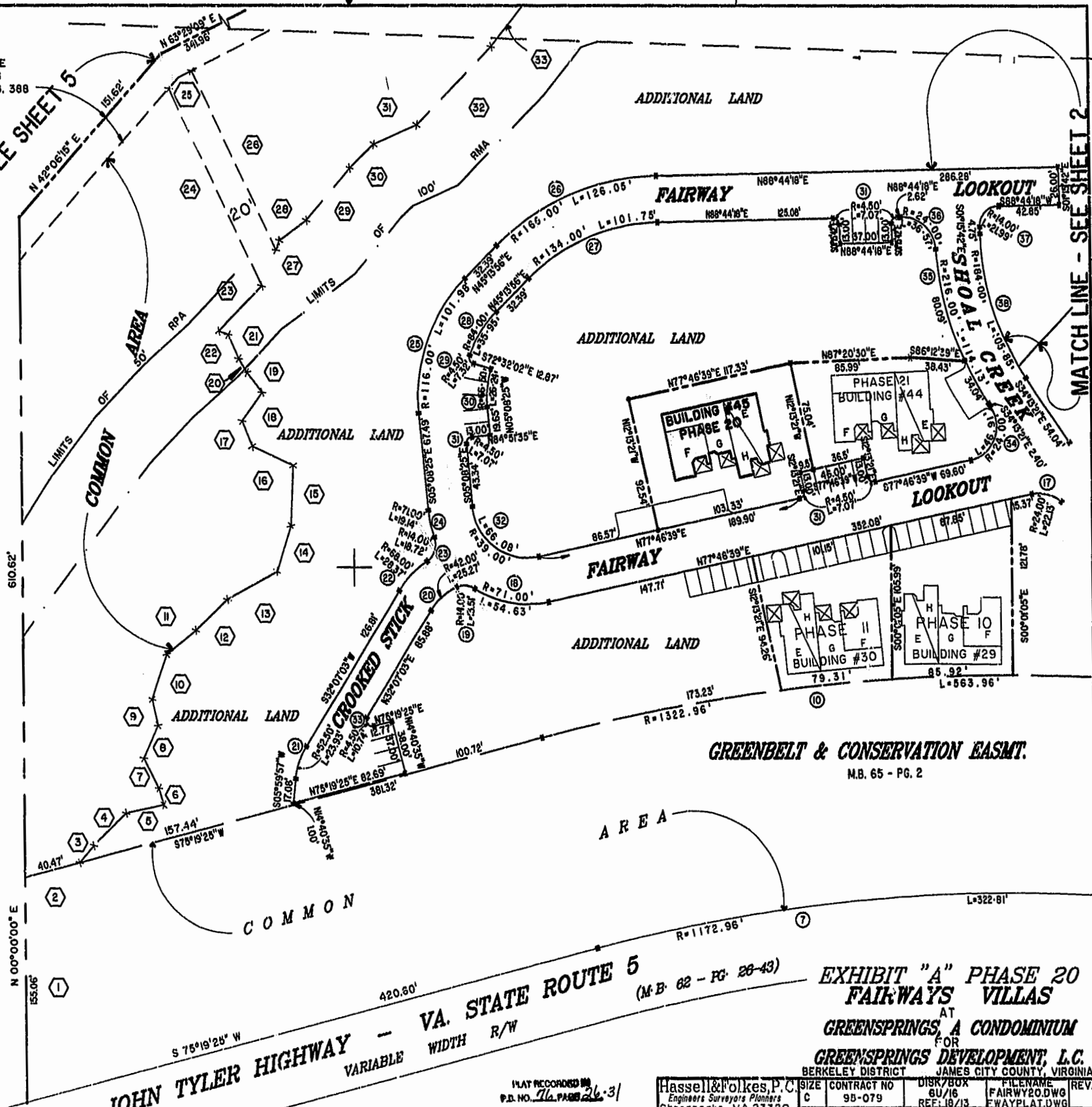
EXIST. 20' JAMES CITY COUNTY SERVICE AUTHORITY SAN. SEWER EASEMENT AS SHOWN IN AS-BUILT LOCATION. D.B. 141 - PG. 388



MATCH LINE - SEE SHEET 5

MATCH LINE - SEE SHEET 2

46-1-01-0-0001  
"GREENSPRINGS PLANTATION"  
(DB 322, PG 254)



GREENBELT & CONSERVATION EASMT.  
M.B. 65 - PG. 2

JOHN TYLER HIGHWAY - VA. STATE ROUTE 5  
VARIABLE WIDTH R/W  
S 75° 19' 25" W 420.50'



11:24 AM  
DOCUMENT # 1003 1001 883  
Gloria A. Rogers

PLAT RECORDED IN  
P.B. NO. 76 PAGE 26-31

Hassell & Folkes, P.C.  
Engineers Surveyors Planners  
Chesapeake, VA. 23320  
(757)547-9531

EXHIBIT "A" PHASE 20 FAIRWAYS VILLAS AT GREENSPRINGS, A CONDOMINIUM FOR GREENSPRINGS DEVELOPMENT, L.C. BERKELEY DISTRICT JAMES CITY COUNTY, VIRGINIA			
SIZE	CONTRACT NO	DISK/BOX	FILENAME
C	95-079	6U/16	FAIRWAY20.DWG
SCALE:	DATE:	REV.	
1"=80'	01/10/00		
			SHEET 4 of 6