

NOTE:  
A 15' VIRGINIA POWER EASEMENT EXISTS OUTSIDE AND ALONG THE RIGHT OF WAY OF LONGVIEW LANDING, THORNGATE DRIVE AND WESTOVER RIDGE PER VA POWER PLAT #28-99-0113.

N/F  
HARBURTON, JOHN G. EST.  
3763 BRICK BAT ROAD  
(36-3)(01-0-003)

NOTE:  
SIGN EASEMENTS HEREBY DEDICATED TO GREENSPRING'S WEST HOMEOWNER'S ASSOCIATION

LOT CURVE TABLE

LOT	DELTA	RADIUS	LENGTH	TANGENT	CHORD	CHL BEAR
25	153°02'	275.00	65.28	32.79	65.12	S59°35'27"E
26	153°02'	275.00	65.28	32.79	65.13	S45°59'28"E
27	153°02'	275.00	65.28	32.79	65.13	S32°23'24"E
28	153°02'	275.00	65.28	32.79	65.13	S18°47'21"E
29	153°02'	275.00	65.28	32.79	65.13	S05°11'19"E
30	153°02'	275.00	65.28	32.79	65.13	S08°24'43"W
31	153°02'	275.00	65.28	32.79	65.13	S22°00'46"W
32	08°14'48"	275.00	30.57	19.82	39.55	S32°58'11"W
33	04°26'31"	528.00	40.70	20.36	40.69	S39°16'50"W
70	09°34'28"	475.00	70.37	39.78	78.28	N81°57'57"E
71	09°02'24"	475.00	74.94	37.85	74.87	N42°39'32"E
72A	02°18'22"	225.00	9.06	4.53	9.06	N35°54'24"E
72B	01°04'45"	475.00	8.95	4.47	8.95	N37°35'5"E
73	31°29'28"	225.00	123.96	63.44	122.11	N19°00'29"E
74	31°29'28"	225.00	123.96	63.44	122.11	N12°28'56"W
75A	13°48'37"	325.00	78.05	39.22	77.87	S30°34'36"W
75B	34°05'44"	25.00	41.06	28.85	38.80	S70°44'40"W
75C	33°58'48"	225.00	133.44	68.75	131.49	N45°13'05"W
76	03°03'17"	325.00	17.33	8.67	17.33	S38°59'03"W
77	08°52'12"	425.00	60.06	25.51	60.93	S43°56'46"W
78	10°19'21"	425.00	78.57	38.39	78.47	S52°32'54"W
79	10°19'21"	425.00	78.57	38.39	78.47	S62°51'56"W
80A	01°48'36"	775.00	24.03	12.02	24.03	S74°29'59"W
80B	07°21'41"	425.00	54.80	27.34	54.57	S71°42'27"W
81	08°11'57"	775.00	83.78	41.93	83.73	S70°30'53"W
82	08°11'57"	775.00	83.78	41.93	83.73	S64°19'18"W
92	11°48'47"	275.00	70.93	35.68	70.73	N33°07'21"E
93	02°37'04"	375.00	17.13	8.57	17.13	N41°49'14"E
94	13°54'53"	375.00	91.07	45.78	90.85	N50°05'12"E
95	13°54'53"	375.00	91.07	45.78	90.85	N64°00'09"E
68A	04°25'46"	375.00	28.69	14.50	28.98	N73°10'24"E
98B	03°54'20"	825.00	53.24	28.13	58.23	N73°28'07"E
97	05°43'46"	825.00	82.30	41.28	82.47	N68°37'04"E

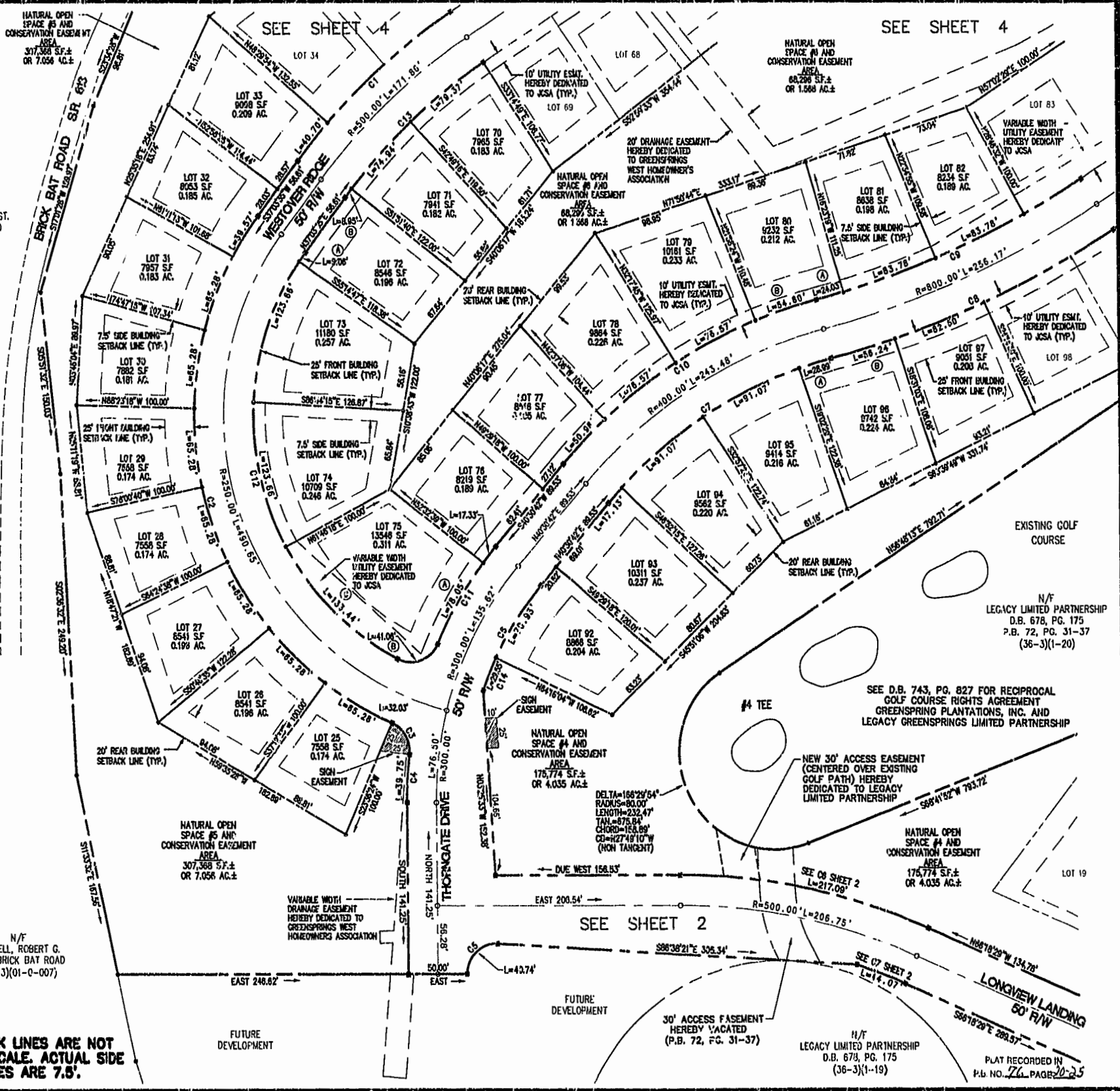
RIGHT-OF-WAY CURVE TABLE

NUMBER	DELTA	RADIUS	LENGTH	TANGENT	CHORD	CHL BEAR
C1	12°41'36"	525.00	180.46	91.12	179.96	S46°54'23"W
C2	103°27'02"	275.00	496.63	348.63	431.76	S14°39'56"E
C3	73°23'56"	25.00	32.03	16.63	29.89	S29°41'29"E
C4	07°10'28"	325.00	39.75	19.90	39.73	S03°30'14"W
C5	63°21'39"	25.00	40.74	28.51	38.38	N48°40'49"E
C6	20°56'07"	275.00	100.48	50.81	99.92	N30°02'39"E
C7	34°52'35"	375.00	228.28	117.79	224.78	N57°57'00"E
C8	10°20'48"	825.00	284.17	133.23	283.05	N66°12'53"E
C9	18°20'48"	775.00	248.17	128.15	247.10	S66°12'53"W
C10	34°52'35"	425.00	258.70	133.50	254.73	S67°07'00"W
C11	16°48'54"	325.00	95.39	48.04	95.04	S32°06'15"W
C12	6°18'03"	225.00	389.82	284.89	342.86	N12°34'28"W
C13	18°41'36"	475.00	163.26	82.44	162.46	N46°54'23"E

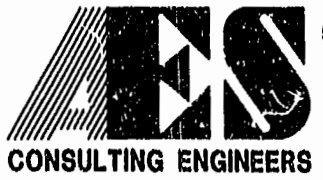
OPEN AREA CURVE TABLE

NUMBER	DELTA	RADIUS	LENGTH	TANGENT	CHORD	CHL BEAR
C14	08°09'25"	275.00	29.53	14.79	29.54	S22°39'18"W

NOTE:  
SIDE SETBACK LINES ARE NOT DRAWN TO SCALE. ACTUAL SIDE SETBACK LINES ARE 7.5'.



01.03.00-08.53 865602P3.DWG



5248 Olde Towne Road, Suite 1  
Williamsburg, Virginia 23188  
(757) 253-0040  
Fax (757) 220-8994

PLAT OF SUBDIVISION  
GREENSPRING'S WEST  
PHASE II  
LOTS 25-33, 70-82, 92-97  
BEING THE PROPERTY OF JAMESTOWN, L.L.C.

BERKELEY DISTRICT    JAMES CITY COUNTY    VIRGINIA



No.	DATE	REVISION / COMMENT / NOTE	BY

Designed HWP/CVG	Drawn JFS
Scale 1"=60'	Date 12/10/99
Project No. 8856-2	
Drawing No. 3 OF 6	