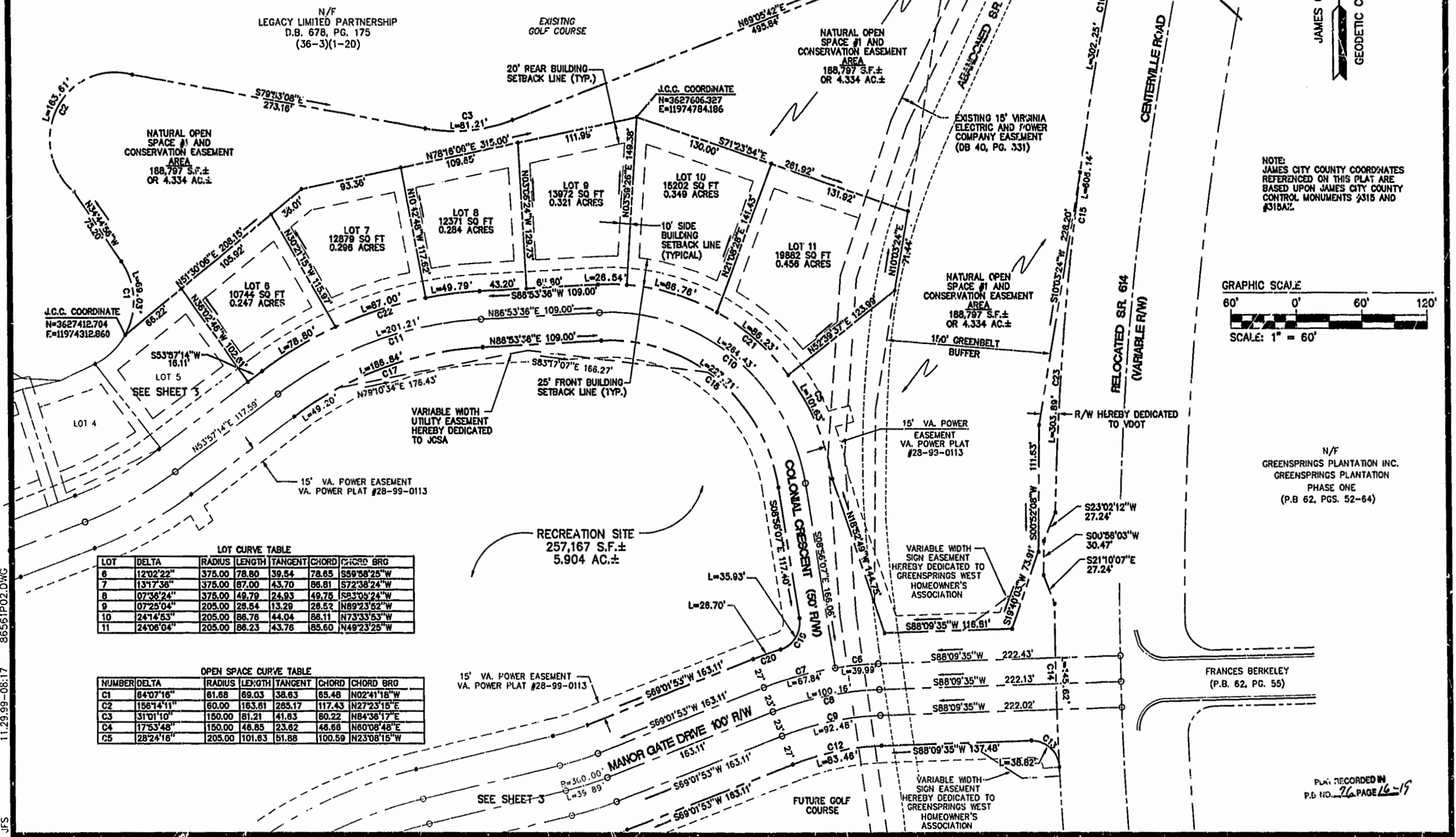


CENTERLINE ROAD CURVE TABLE

NUMBER	DELTA	RADIUS	LENGTH	TANGENT	CHORD	CHORD BRG
C6	05°55'47"	388.41	39.99	39.97	20.01	S84°36'44"W
C7	12°01'60"	323.00	87.84	87.71	34.04	S76°02'53"W
C8	19°07'42"	300.00	100.16	99.69	50.55	S78°35'44"W
C9	19°07'42"	277.00	82.48	82.05	46.67	S78°35'44"W
C10	84°10'18"	180.00	284.43	241.29	182.58	S51°01'16"E
C11	32°58'21"	350.00	201.21	198.46	103.47	N70°25'25"E

RIGHT-OF-WAY CURVE TABLE

NUMBER	DELTA	RADIUS	LENGTH	TANGENT	CHORD	CH. BEAR
C12	19°07'42"	250.00	83.48	42.12	83.08	S78°35'44"W
C13	88°57'51"	25.00	38.82	24.55	35.03	N47°21'29"W
C14	02°58'47"	2800.00	145.62	72.83	145.60	S01°23'03"E
C15	12°24'12"	2800.00	606.14	304.28	604.98	S07°57'50"W
C16	06°11'06"	2800.00	302.25	151.27	302.10	N11°04'23"E
C17	32°58'21"	325.00	186.84	98.08	184.28	N70°25'25"E
C18	84°10'18"	155.00	227.71	139.98	207.78	S51°01'16"E
C19	82°20'16"	25.00	35.83	21.86	32.91	S32°14'01"W
C20	04°22'16"	350.00	28.70	13.36	28.70	S71°13'01"W
C21	84°10'18"	205.00	301.16	185.14	274.80	N51°01'16"E
C22	32°58'21"	375.00	215.59	110.86	212.63	S70°25'25"W
C23	06°13'07"	2800.00	303.89	182.10	303.74	N04°52'17"E



LOT CURVE TABLE

LOT	DELTA	RADIUS	LENGTH	TANGENT	CHORD	CHORD BRG
6	12°02'22"	375.00	78.80	39.54	78.65	S59°58'25"W
7	13°17'36"	375.00	87.00	43.70	86.81	S72°38'24"W
8	07°38'24"	375.00	49.79	24.93	49.75	S83°08'24"W
9	07°25'04"	205.00	28.84	13.29	28.52	N89°23'52"W
10	24°14'53"	205.00	88.76	44.04	88.11	N73°33'53"W
11	24°08'04"	205.00	88.23	43.76	85.60	N49°23'25"W

OPEN SPACE CURVE TABLE

NUMBER	DELTA	RADIUS	LENGTH	TANGENT	CHORD	CHORD BRG
C1	64°07'16"	61.68	69.03	38.83	65.48	N02°41'18"W
C2	158°14'11"	60.00	163.81	285.17	117.43	N27°23'15"E
C3	31°01'10"	150.00	81.21	41.83	80.22	N84°38'17"E
C4	17°53'48"	150.00	46.85	23.82	46.68	N80°08'48"E
C5	28°24'16"	205.00	101.63	51.88	100.59	N23°08'15"W

CONSULTING ENGINEERS

2548 Olde Towne Road, Suite 1
 Williamsburg, Virginia 23188
 (757) 253-0040
 Fax (757) 220-8994

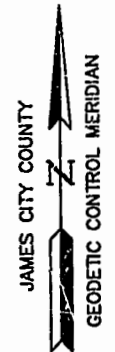
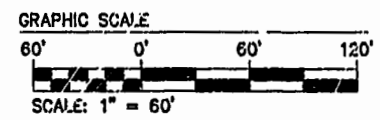
PLAT OF SUBDIVISION GREENSPRINGS WEST PHASE I LOTS 6-11 BEING THE PROPERTY OF JAMESTOWN, L.L.C.

BERKELEY DISTRICT JAMES CITY COUNTY VIRGINIA

COMMONWEALTH OF VIRGINIA
 7/30/99
 G.T. WILSON, JR.
 CERTIFICATE No. 1183
 LAND SURVEYOR

No.	DATE	REVISION / COMMENT / NOTE	BY
2	11/8/99	REV. TO SHOW VA. POWER EASEMENT AND RECIPROCAL GOLF COURSE RIGHTS AGREEMENT (D.B. 743/827)	JFS
1	9/20/99	REVISED PER J.C.C. COMMENTS	JFS

Designed HWP/CWG
 Scale 1"=60'
 Project No. 8858-1
 Drawing No. 2 OF 4



NOTE: JAMES CITY COUNTY COORDINATES REFERENCED ON THIS PLAT ARE BASED UPON JAMES CITY COUNTY CONTROL MONUMENTS 2315 AND 2318A2.

N/F GREENSPRINGS PLANTATION INC. GREENSPRINGS PLANTATION PHASE ONE (P.B. 62, PGS. 52-64)

PLAT RECORDED IN P.B. NO. 26 PAGE 16-19

11.29.99-08.17 86561P02.DWG JFS