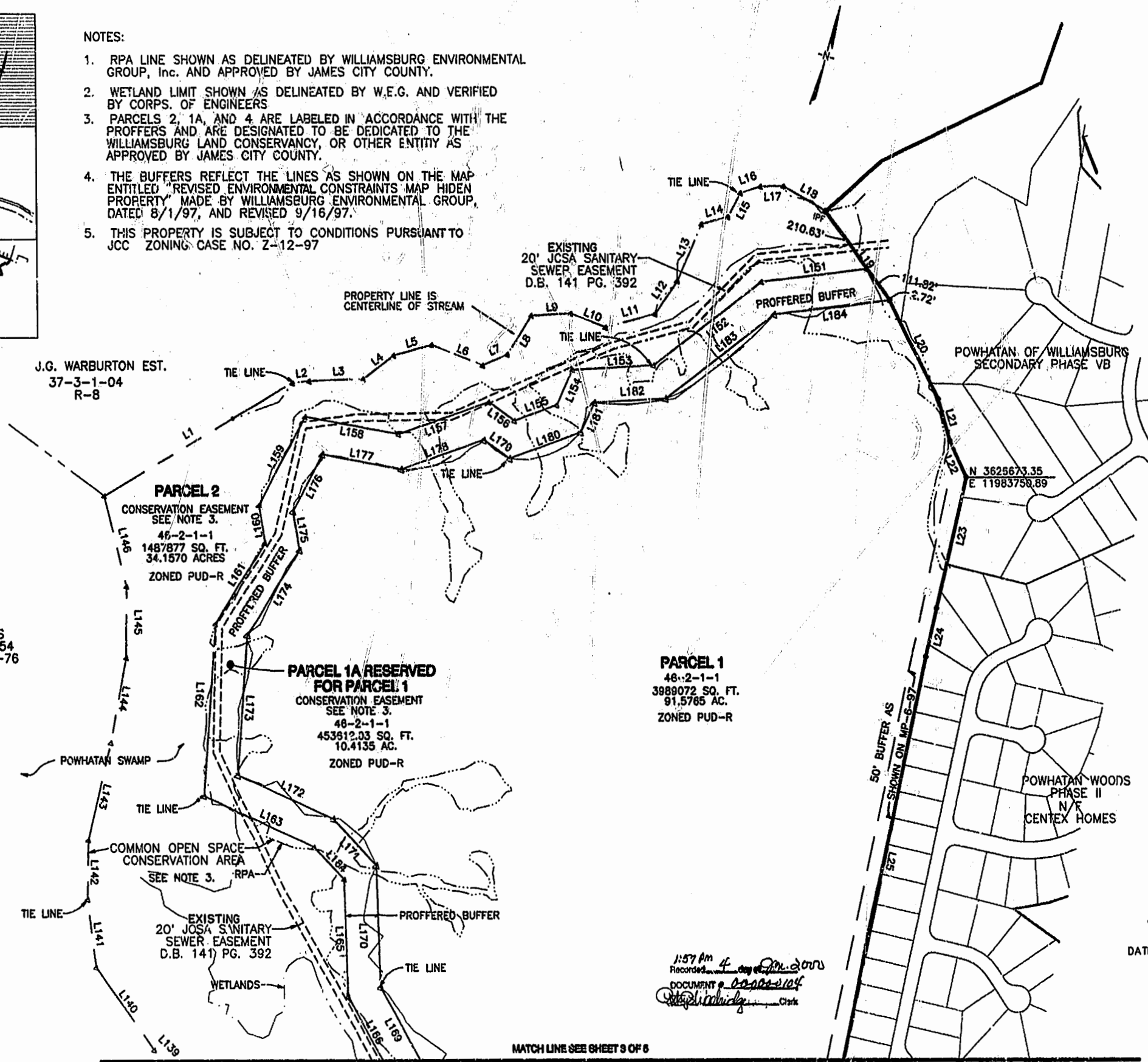


KEY MAP N.T.S.

NOTES:

1. RPA LINE SHOWN AS DELINEATED BY WILLIAMSBURG ENVIRONMENTAL GROUP, Inc. AND APPROVED BY JAMES CITY COUNTY.
2. WETLAND LIMIT SHOWN AS DELINEATED BY W.E.G. AND VERIFIED BY CORPS. OF ENGINEERS
3. PARCELS 2, 1A, AND 4 ARE LABELED IN ACCORDANCE WITH THE PROFFERS AND ARE DESIGNATED TO BE DEDICATED TO THE WILLIAMSBURG LAND CONSERVANCY, OR OTHER ENTITY AS APPROVED BY JAMES CITY COUNTY.
4. THE BUFFERS REFLECT THE LINES AS SHOWN ON THE MAP ENTITLED "REVISED ENVIRONMENTAL CONSTRAINTS MAP HIDDEN PROPERTY" MADE BY WILLIAMSBURG ENVIRONMENTAL GROUP, DATED 8/1/97, AND REVISED 9/16/97.
5. THIS PROPERTY IS SUBJECT TO CONDITIONS PURSUANT TO JCC ZONING CASE NO. Z-12-97



J.G. WARBURTON EST.
37-3-1-04
R-8

PARCEL 2
CONSERVATION EASEMENT
SEE NOTE 3.
46-2-1-1
1487877 SQ. FT.
34.1570 ACRES
ZONED PUD-R

PARCEL 1A RESERVED FOR PARCEL 1
CONSERVATION EASEMENT
SEE NOTE 3.
46-2-1-1
453912.03 SQ. FT.
10.4135 AC.
ZONED PUD-R

PARCEL 1
46-2-1-1
3989072 SQ. FT.
91.5785 AC.
ZONED PUD-R

GREENSPRINGS
DB. 322 PG. 354
PB. 54 PG. 69-76
R-4



PLAT OF SUBDIVISION
HIDDEN TRACT
POWHATAN DISTRICT
JAMES CITY COUNTY, VIRGINIA
SHEET 2 OF 5
DATE: 12/16/99 SCALE: 1" = 200'

1:57 PM 4
Recorded
DOCUMENT # 2000-104
Clark

MATCH LINE SEE SHEET 3 OF 5

