

PLAT OF SUBDIVISION
WATERFORD
 AT
POWHATAN SECONDARY
 PHASE TWENTY-TWO
 BERKELEY DISTRICT
 JAMES CITY COUNTY, VIRGINIA

DATE: 10/21/98 SHEET 2 OF 3 SCALE: 1"=100'

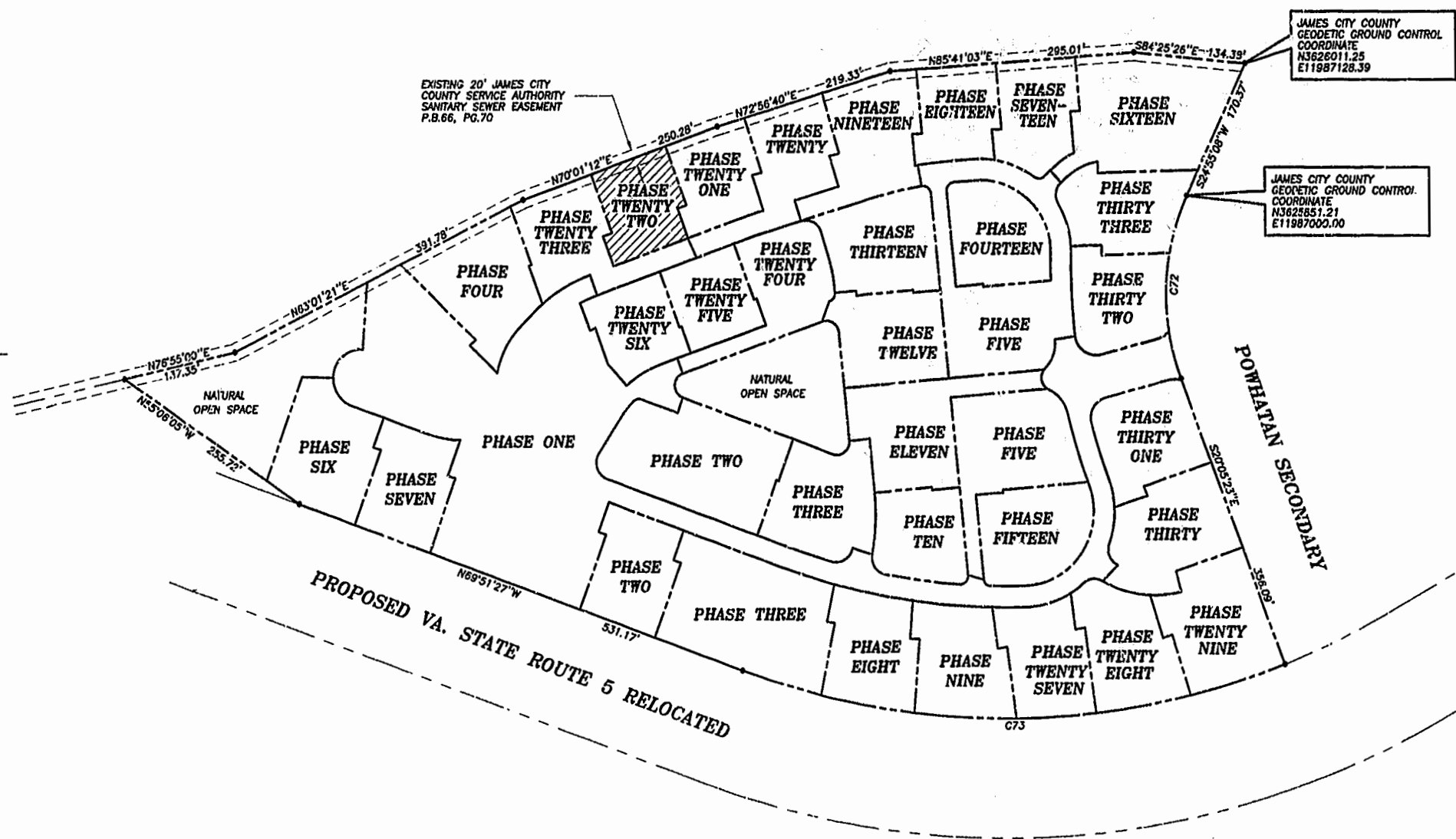
PROJECT NO: 97-008 DRAWN BY: SJB



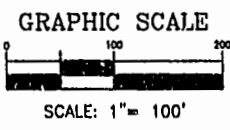
SLEDD & ASSOCIATES, P.C.
 ENGINEERS PLANNERS SURVEYORS
 11832 ROCK LANDING DRIVE, SUITE 203
 NEWPORT NEWS, VIRGINIA 23606
 (757) 873-3385

00°32'24"
 JAMES CITY COUNTY
 GEODETIC GROUND CONTROL
 POINT
 PLAT BOOK 66, PAGE 70

NOW OR FORMERLY
 POWHATAN ENTERPRISES, INC.



PROPOSED VA. STATE ROUTE 5 RELOCATED



CURVE DATA

NUMBER	DELTA	RADIUS	LENGTH	TANGENT	CHORD	CHORD BEARING
C72	45°00'31"	280.00'	219.95'	116.00'	214.34'	S02°24'52"W
C73	41°25'14"	924.91'	668.91'	349.64'	654.43'	S89°25'26"W

Recorded 30 day of December 1999
 DOCUMENT # 990027008
 SLEDD & ASSOCIATES, P.C.

PLAT RECORDED IN
 P.B. NO. 76 PAGE 4-6