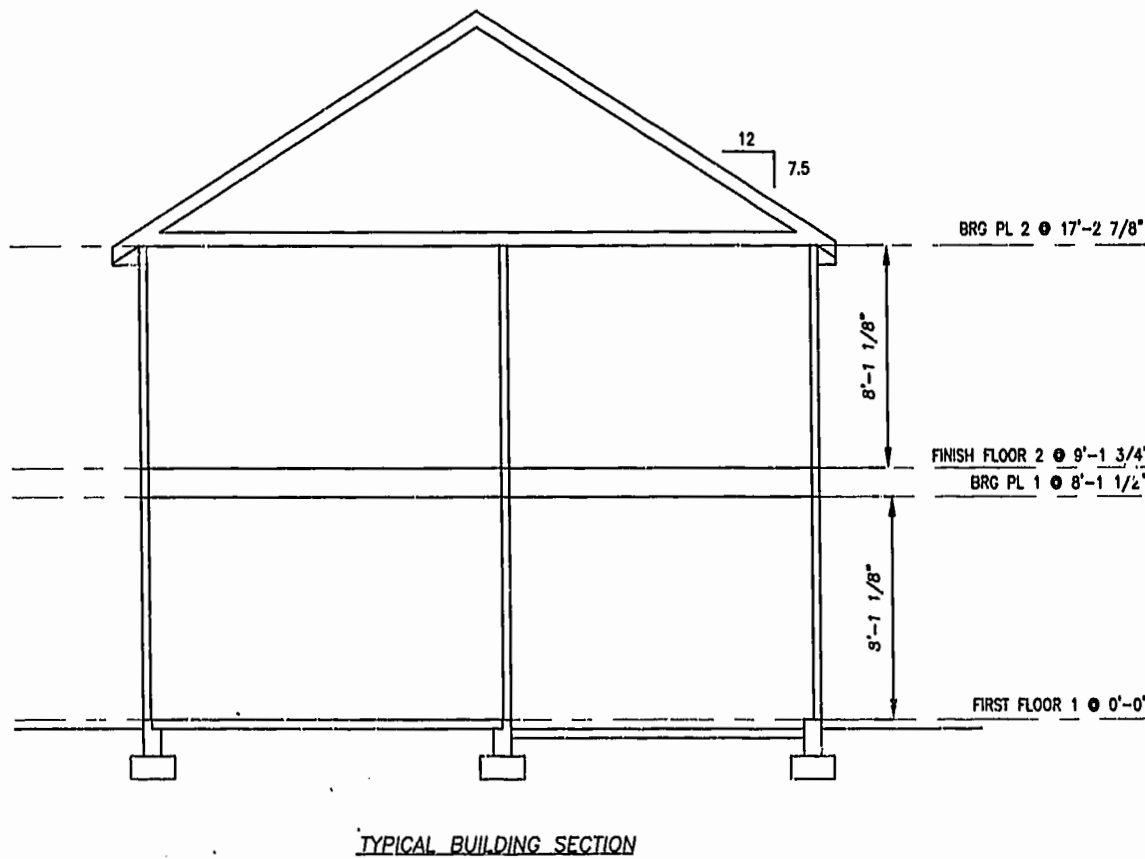
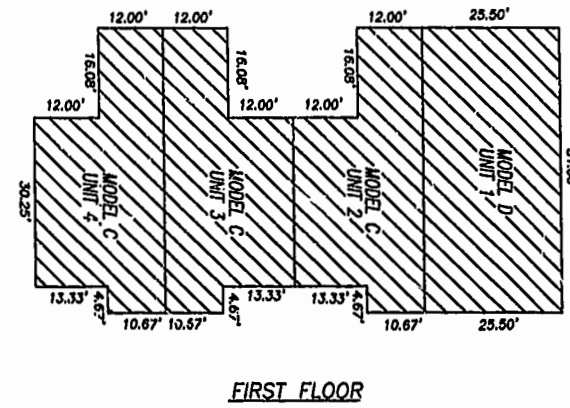
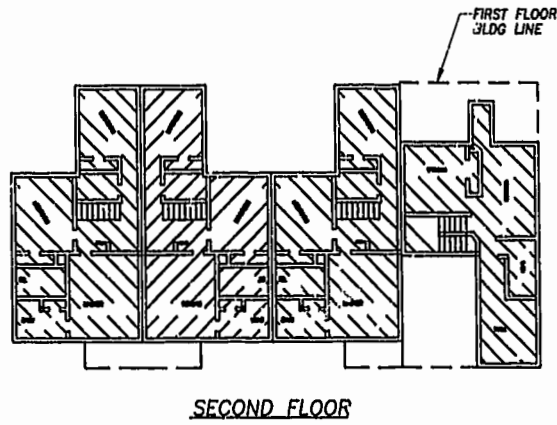


NOTE:
ALL BUILDING DIMENSIONS SHOWN ARE EXTERIOR DIMENSIONS



THE UNDERSIGNED CERTIFIES THAT THESE PLANS ARE ACCURATE AND COMPLY WITH THE PROVISIONS OF CODE OF VIRGINIA, SECTION 55-79.58.B AND THAT ALL UNITS OR PORTIONS THEREOF DEPICTED HEREON AND ALL COMMON ELEMENTS HAVE BEEN SUBSTANTIALLY COMPLETED.

SIGNED: *W. Page Cockrell*
W. PAGE COCKRELL, L.S.

EXHIBIT B-3

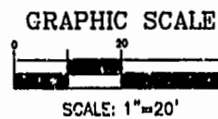
**SUPPLEMENTAL CONDOMINIUM PLAT
OF
CROMWELL RIDGE CONDOMINIUMS
JAMES CITY COUNTY, VIRGINIA**

DATE: 12/13/99 SHEET 3 OF 5 SCALE: 1"=20'

PROJECT NO: 30807.00 DRAWN BY: SAA

VHIB Vanasse Hangen Brustlin, Inc.
Transportation Land Development Environmental Services
11832 Rock Landing Drive, Suite 203
Newport News, Virginia 23608
(757) 873-3386 • FAX (757) 873-0757

LEGEND
UNIT AREA



PLAT RECORDED IN
P.D. NO. 75 PAGE 84-88

3:15 PM
Recorded 22 day of Dec 1999
DOCUMENT # 952026706
Robert S. Wood Clerk
By Claudia Hernandez Dep. Clerk