

PLAT OF SUBDIVISION  
**WATERFORD**  
 AT  
**POWHATAN SECONDARY**  
 PHASE TWELVE  
 BERKELEY DISTRICT  
 JAMES CITY COUNTY, VIRGINIA

DATE: 10/21/98 SHEET 2 OF 3 SCALE: 1"=100'

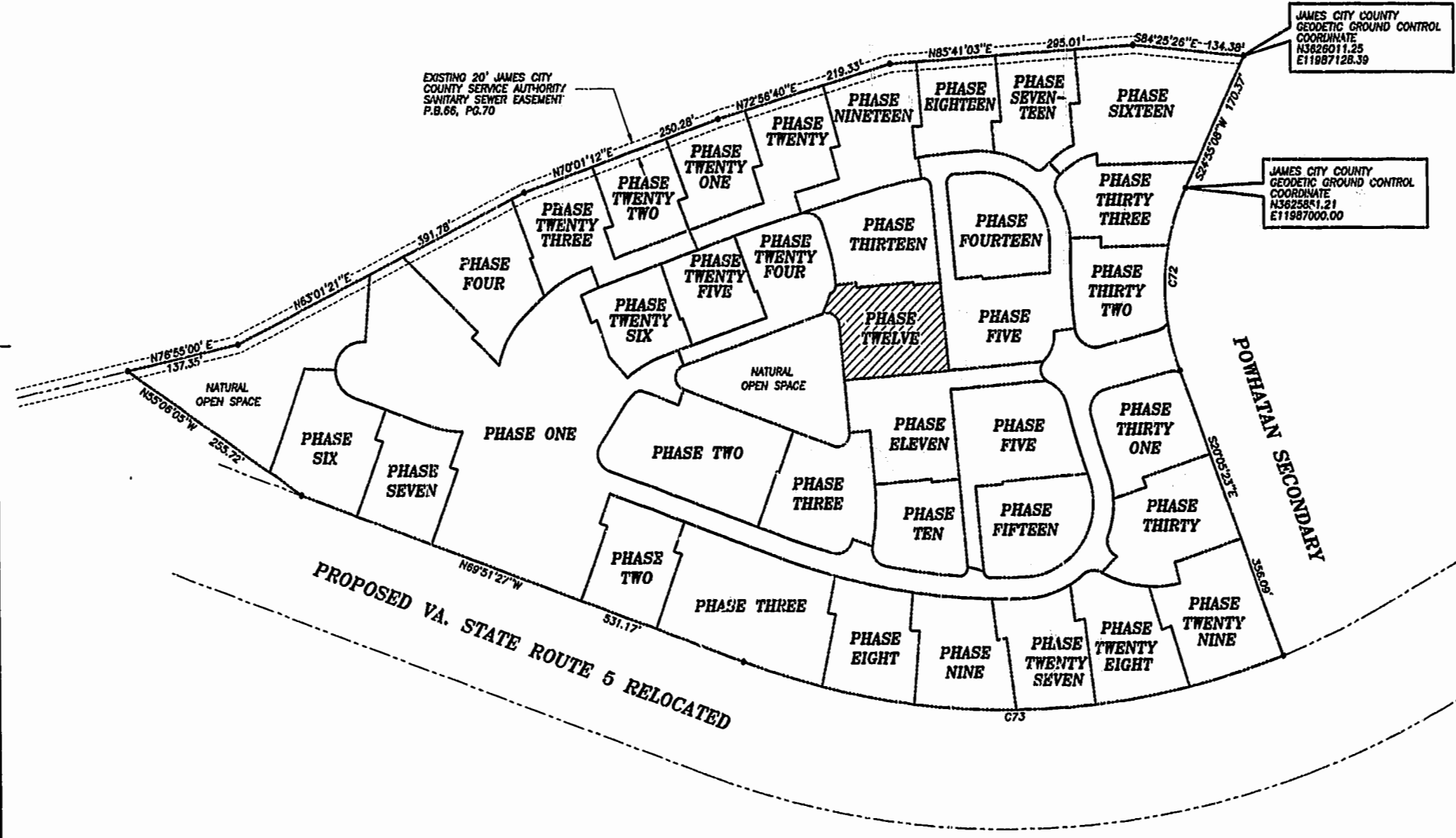
PROJECT NO: 97-008 DRAWN BY: SJB



**SLIEDD & ASSOCIATES, P.C.**  
 ENGINEERS PLANNERS SURVEYORS  
 11832 ROCK LANDING DRIVE, SUITE 203  
 NEWPORT NEWS, VIRGINIA 23606  
 (707) 873-3386

00'32'24"  
 JAMES CITY COUNTY  
 TOURISM DEVELOPMENT  
 PLAT BOOK 56, PAGE 70

NOW OR FORMERLY  
 POWHATAN ENTERPRISES, INC.



JAMES CITY COUNTY  
 GEODETIC GROUND CONTROL  
 COORDINATE  
 N3828011.25  
 E11987128.39

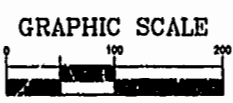
JAMES CITY COUNTY  
 GEODETIC GROUND CONTROL  
 COORDINATE  
 N3825881.21  
 E11987000.00



PROPOSED VA. STATE ROUTE 5 RELOCATED

**CURVE DATA**

NUMBER	DELTA	RADIUS	LENGTH	TANGENT	CHORD	CHORD BEARING
C72	45°00'31"	280.00'	219.95'	116.00'	214.34'	S02°24'52"W
C73	41°26'14"	924.91'	668.91'	349.84'	654.43'	S89°25'26"W



SCALE: 1" = 100'

1106 PM  
 Recorded 15 day of Dec. 1999  
 DOCUMENT # 92222157  
 [Signature]