

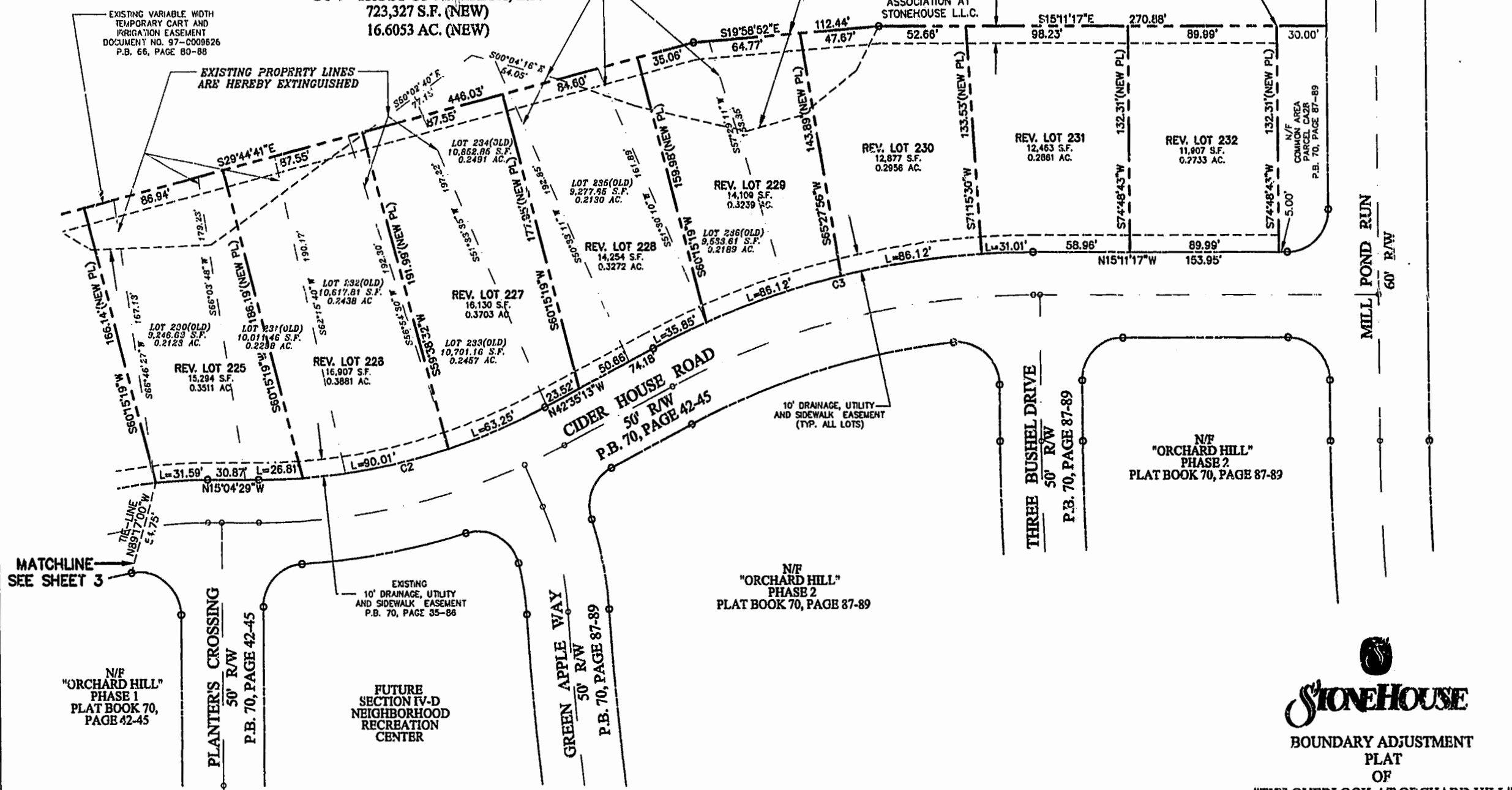
VIRGINIA STATE PLANE COORDINATE SYSTEM (SOUTH ZONE) (NAD 83)

N/F  
PARCEL 12 (OLD)  
GOLF TRUST OF AMERICA, L.P.  
DOCUMENT NO. 98-0019619  
716,063 S.F. (OLD)  
16.4156 AC. (OLD)

**NEW  
PARCEL 12**  
GOLF TRUST OF AMERICA, L.P.  
723,327 S.F. (NEW)  
16.6053 AC. (NEW)

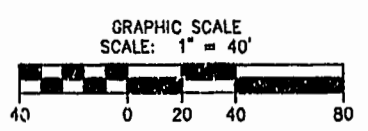
EXISTING VARIABLE WIDTH  
TEMPORARY CART AND  
IRRIGATION EASEMENT  
DOCUMENT NO. 97-0005628  
P.B. 66, PAGE 82-88

"NAD 83" COORDINATES  
N 3,687,078.1609  
E 11,973,612.6916



**CURVE TABLE**

CURVE	RADIUS	LENGTH	TANGENT	CHORD	BEARING	DELTA
C1	300.00'	516.27'	348.78'	454.88'	N64°22'28"W	98°35'58"
C2	375.00'	180.07'	91.80'	178.34'	N28°49'51"W	27°30'44"
C3	500.00'	239.10'	121.88'	236.83'	N28°53'15"W	27°23'58"
C4	300.00'	483.83'	312.86'	433.07'	N61°16'37"W	92°24'15"



**BOUNDARY ADJUSTMENT  
PLAT  
OF  
"THE OVERLOOK AT ORCHARD HILL"  
PHASE 2  
AND  
BOUNDARY LINE ADJUSTMENT OF  
PARCEL 12  
OF  
GOLF TRUST OF AMERICA, L.P.  
BEING A SUBDIVISION  
OF  
STONEHOUSE LIMITED LIABILITY  
COMPANY  
STONEHOUSE DISTRICT, JAMES CITY COUNTY  
DATE: 07/12/99 REVISED 07/27/99 SCALE: 1" = 40'  
SHEET 2 OF 3**

10:16 Am  
14 Nov 1999  
DOCUMENT # 98-0019619  
Helen S. ...  
By Claudia ...

PLAT RECORDED  
P.B. NO. 75 PAGE 114-116