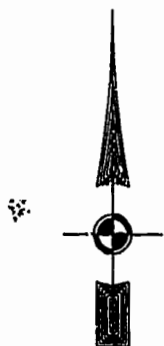


PLAT RECORDED IN  
P.B. NO. 92 PAGE 20-67

Recorded 30 day of October 1999  
DOCUMENT # 990325005 2:57  
Robert S. Wood Clerk



46-1-01-0-0001  
"GREENSPRINGS PLANTATION"  
(DB 322, PG 264)

EXIST. 20' JAMES CITY COUNTY SERVICE  
AUTHORITY SAN. SEWER EASEMENT AS  
SHOWN IN AS-BUILT LOCATION. D.B. 141 - PG. 388

EXIST. 20' DRAINAGE EASEMENT  
M.B. 65 - PG. 2

EXIST. 20' DRAINAGE EASMT.  
M.B. 65 - PG. 2

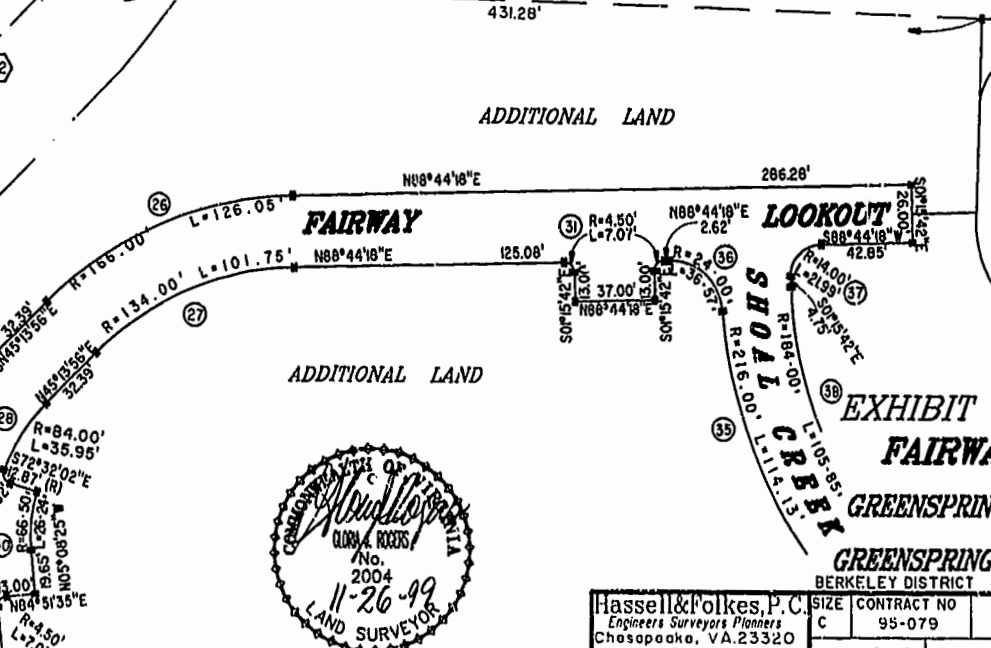
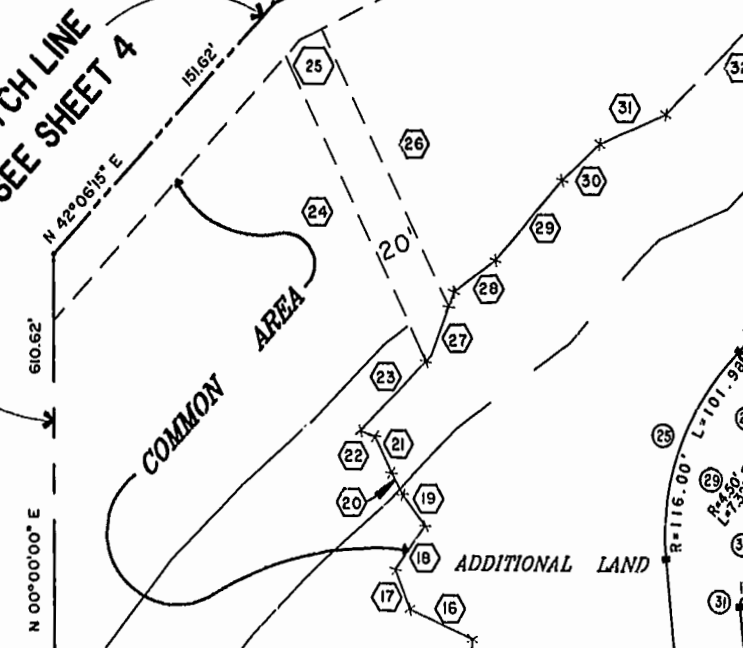
N 76°40'21" E  
20' SANITARY SEWER EASEMENT

COMMON AREA  
LIMITS OF 50' RPA  
LIMITS OF 100' RPA

EX. 50' COLONIAL PIPELINE EASEMENT (D.B. 90 PG. 1)  
COMMON AREA

MATCH LINE  
SEE SHEET 4

MATCH LINE - SEE SHEET 3



COMMON AREA  
BMP LAKE # 1  
AREA = 38,082 SQ. FT. =  
0.8735 AC.  
SEE SHEET 3 FOR DETAIL

EXHIBIT "A" PHASE 39  
FAIRWAYS VILLAS  
AT  
GREENSPRINGS, A CONDOMINIUM  
FOR  
GREENSPRINGS DEVELOPMENT, L.C.  
BERKELEY DISTRICT JAMES CITY COUNTY, VIRGINIA



Hassell & Folkes, P.C. Engineers Surveyors Planners Chesapeake, VA 23320 (757) 547-9531	SIZE C CONTRACT NO 95-079 DISK/BOX 6P/16 REF: 10/13	FILENAME FAIRWAY39.DWG FWAYPLAT.DWG	REV.
SCALE: 1" = 50'	DATE: 07/29/99	SHEET 5 of 6	

CONDO-3