

PLAT OF SUBDIVISION
WATERFORD
 AT
POWHATAN SECONDARY
 PHASE TWENTY-THREE
 BERKELEY DISTRICT
 JAMES CITY COUNTY, VIRGINIA

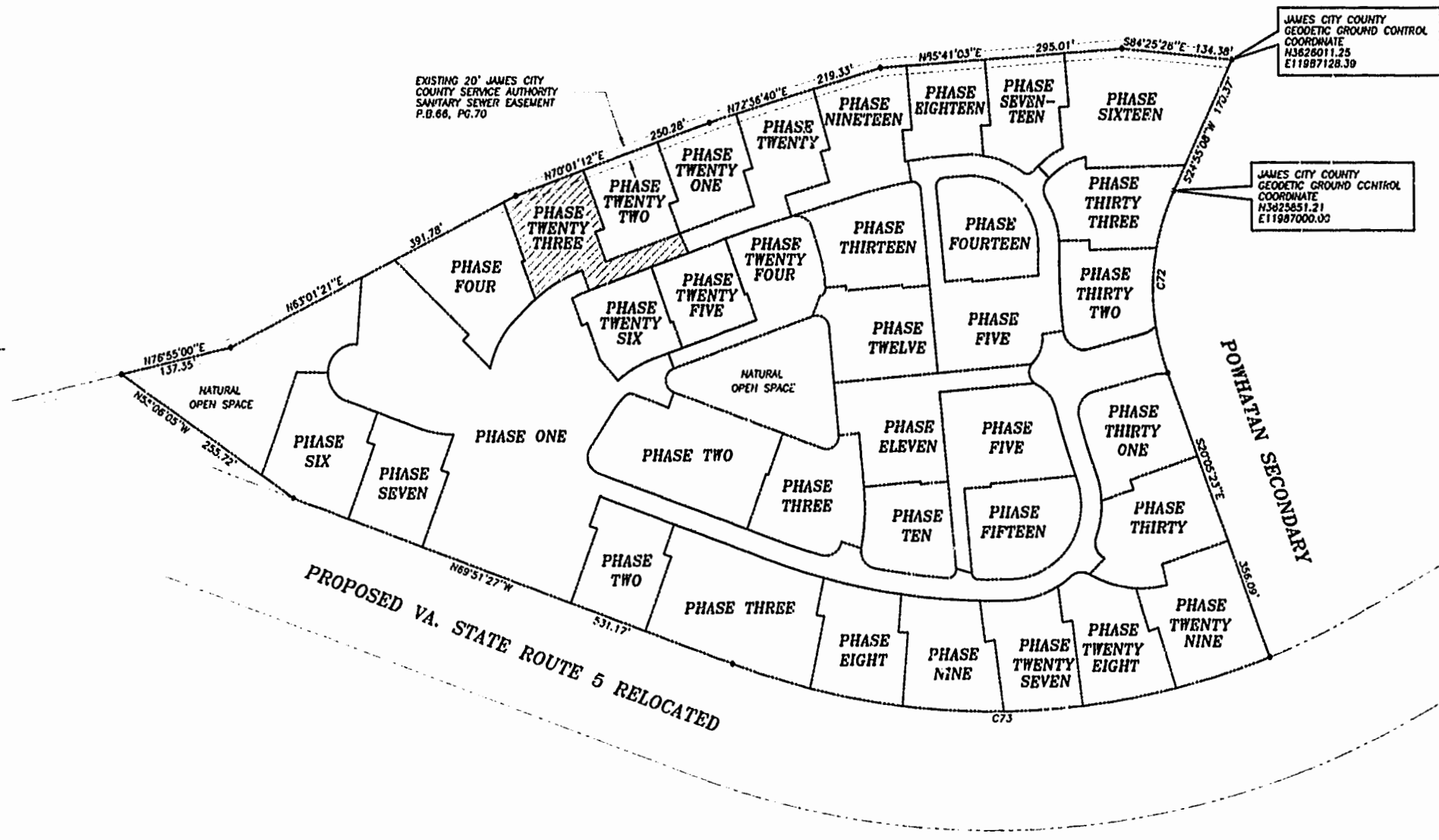
DATE: 10/21/98 SHEET 2 OF 3 SCALE: 1"=100'
 PROJECT NO: 97-008 DRAWN BY: SJB

SLEDD & ASSOCIATES, P.C.
 ENGINEERS PLANNERS SURVEYORS
 11832 ROCK LANDING DRIVE, SUITE 203
 NEWPORT NEWS, VIRGINIA 23606
 (757) 873-3386



00'32'24"
 JAMES CITY COUNTY
 GROUND CONTROL
 MERIDIAN
 PLAT BOOK 66, PAGE 70

NOW OR FORMERLY
 POWHATAN ENTERPRISES, INC.



JAMES CITY COUNTY
 GEODETIC GROUND CONTROL
 COORDINATE
 N3828011.25
 E11987128.39

JAMES CITY COUNTY
 GEODETIC GROUND CONTROL
 COORDINATE
 N3825851.21
 E11987000.00

EXISTING 20' JAMES CITY
 COUNTY SERVICE AUTHORITY
 SANITARY SEWER EASEMENT
 P.D. 66, PG. 70

CURVE DATA

NUMBER	DELTA	RADIUS	LENGTH	TANGENT	CHORD	CHORD BEARING
C72	45°00'31"	280.00'	219.95'	116.00'	214.34'	S02°24'52"W
C73	41°26'14"	924.91'	668.91'	349.84'	654.43'	S89°25'26"W

