

**EXHIBIT B
CONDOMINIUM PLATS AND PLANS
FOR
WYNDHAM PLANTATION
CONDOMINIUM**

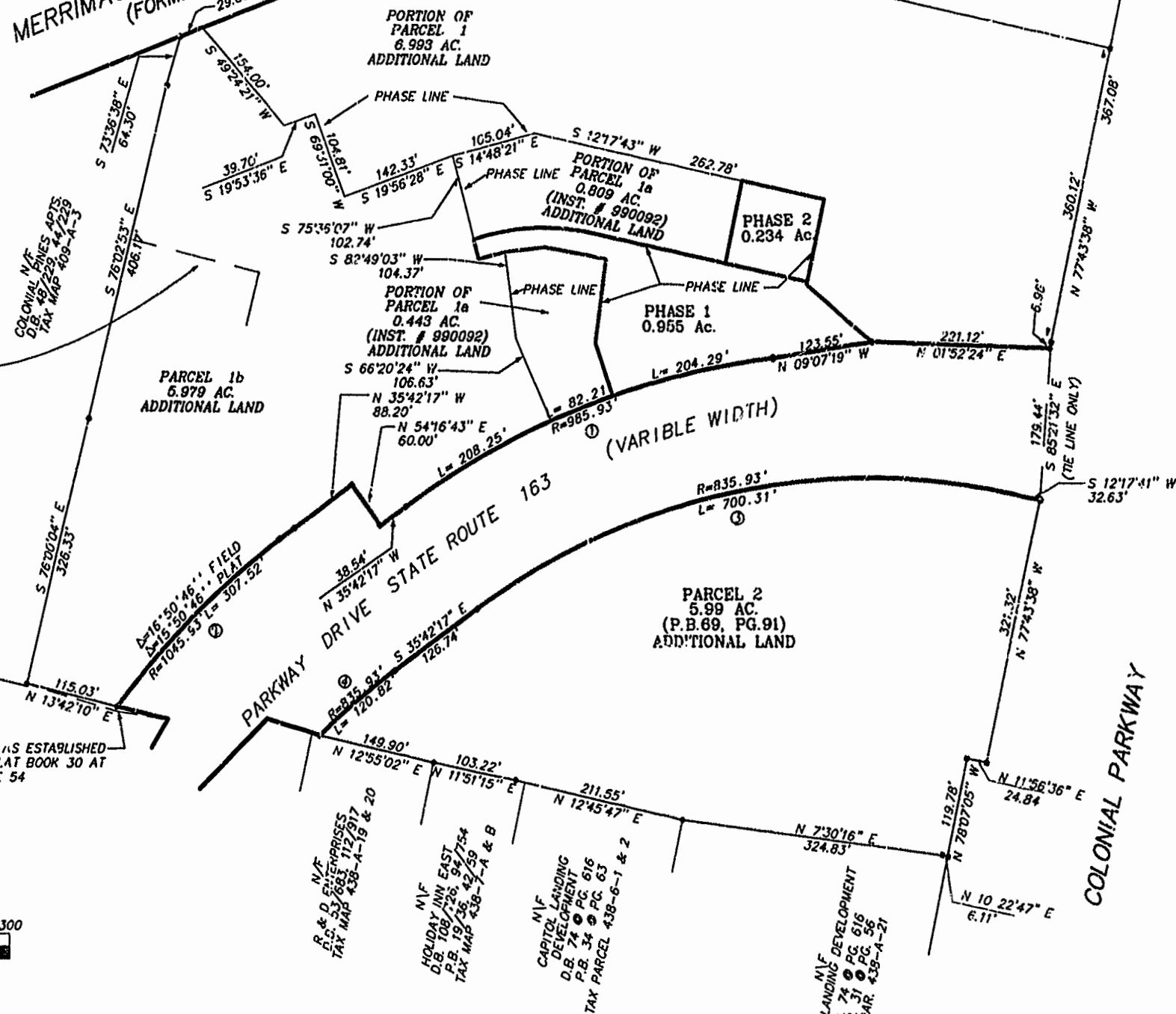
WILLIAMSBURG, VIRGINIA

DATE: SEPTEMBER 27, 1999 SCALE: 1"=100'

REVISED 10/19/1999

MERRIMAC TRAIL STATE ROUTE 143
(FORMERLY STATE ROUTE 168)

N/F
COMMON AREA
BARCLAY SQUARE
P.B. 29, PG.62



APPROXIMATE LOCATION OF 10' VEPCO
RIGHT-OF-WAY EASEMENT AS DEPICTED
IN D.B. 171, PG. 387 (NO LENGTH SPECIFIED)

UNITED STATES GOVERNMENT

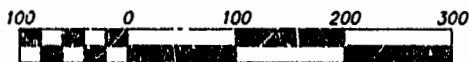
COLONIAL PARKWAY

LEGEND

- PIPE FOUND
- PIN FOUND
- CONCRETE MONUMENT FOUND

REFERENCES

- P.B. 69, PG. 51
- P.B. 69, PG. 71
- P.B. 69, PG. 68
- D.B. 50, PG. 347



Scale 1" = 100'

CURVE TABLE

No.	DELTA	CHORD	TANGENT	RADIUS	LENGTH	CHD LENGTH
1	11°52'19"	N 12°53'20" W	102.51	985.93	204.29	203.93
2	16°50'46"	N 44°07'40" W	154.88	1045.93	307.52	306.42
3	48°00'00"	N 11°42'17" W	372.18	835.93	700.31	680.01
4	08°16'51"	N 39°50'43" W	60.51	835.93	120.82	120.71

I HEREBY CERTIFY THAT THIS PLAT IS ACCURATE AND THAT IT COMPLIES WITH SECTION 55-79.58(A) OF THE VIRGINIA CONDOMINIUM ACT AS AMENDED AND THAT ALL UNITS OR PORTIONS THEREOF DEPICTED HEREON HAVE BEEN SUBSTANTIALLY COMPLETED EXCEPT AS OTHERWISE NOTED.

SIGNED: _____ DATE: 9.27.99



PLAT RECORDED IN
PL. NO. 115 PAGE 15-20

Rickmond Engineering, Inc.

1643 Merrimac Trail
Williamsburg VA 23185
Voice: (757) 229-1776
Fax: (757) 229-4683

Engineering
Surveying
Land Planning
www.rickmond.com

SHEET 1 OF 6

11:31 PM 29 day of Oct 1999
DOCUMENT # 991382
By Claudia A. Broughton, Reg. Clerk