

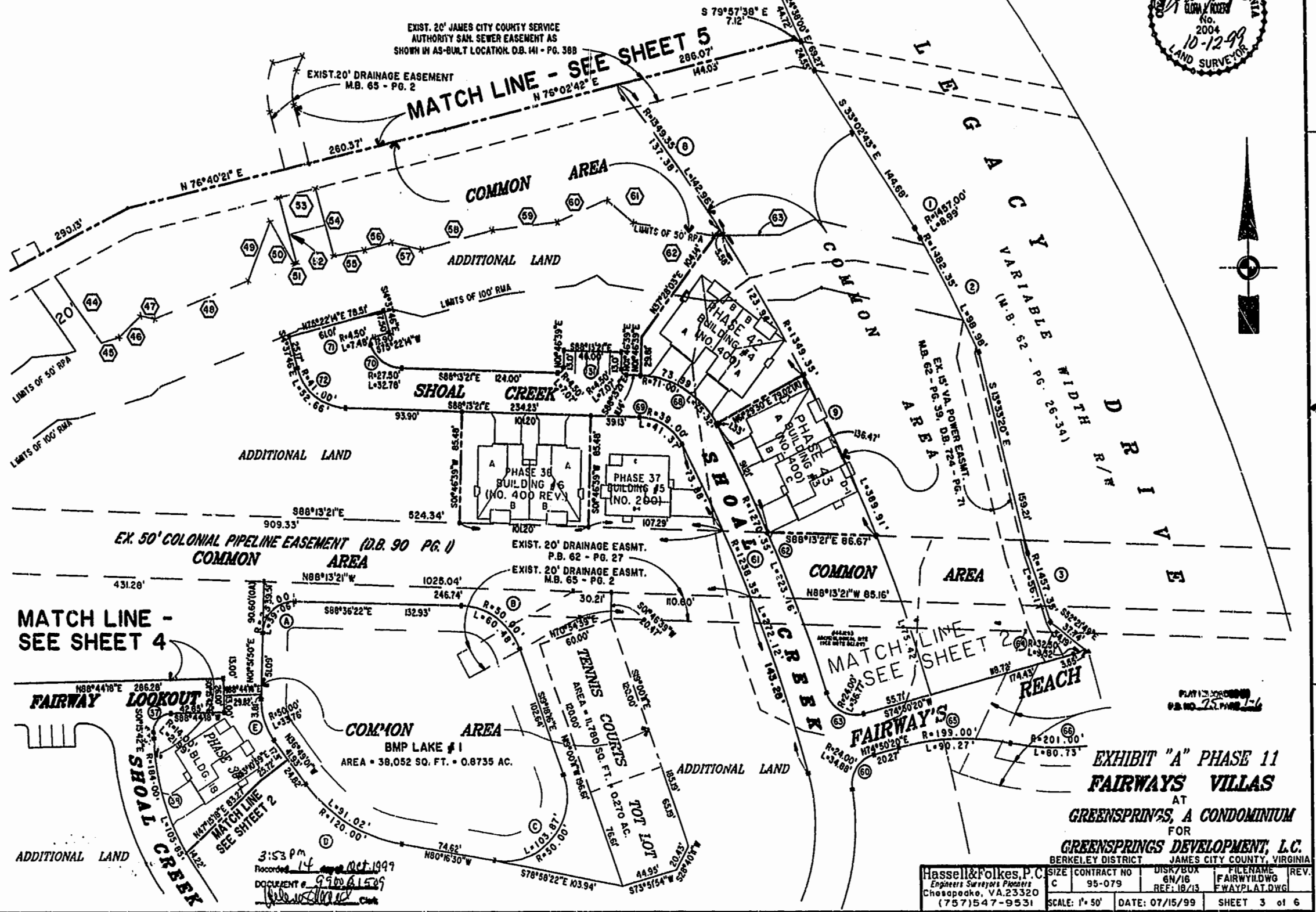
46-1-01-0-0001
"GREENSPRINGS PLANTATION"
(DB 322, PG 254)



EXIST. 20' JAMES CITY COUNTY SERVICE
AUTHORITY SAN. SEWER EASEMENT AS
SHOWN IN AS-BUILT LOCATION, D.B. 141 - PG. 388

EXIST. 20' DRAINAGE EASEMENT
M.B. 65 - PG. 2

MATCH LINE - SEE SHEET 5
N 76°02'42" E
286.07'
144.03'



EX. 50' COLONIAL PIPELINE EASEMENT (D.B. 90 PG. 1)
COMMON AREA

MATCH LINE -
SEE SHEET 4

MATCH LINE
SEE SHEET 2

EXHIBIT "A" PHASE 11
FAIRWAYS VILLAS
AT
GREENSPRINGS, A CONDOMINIUM
FOR
GREENSPRINGS DEVELOPMENT, L.C.

3:53 pm
Recorded 14 Oct 1999
DOCUMENT # 99061509
[Signature]

Hassell & Folkes, P.C. Engineers Surveyors Planners Chesapeake, VA 23320 (757) 547-9531	SIZE	CONTRACT NO	DISK/BOX	FILENAME	REV.
	C	95-079	6N/16	FAIRWAY.DWG	
SCALE: 1" = 50'		DATE: 07/15/99	SHEET 3 of 6		