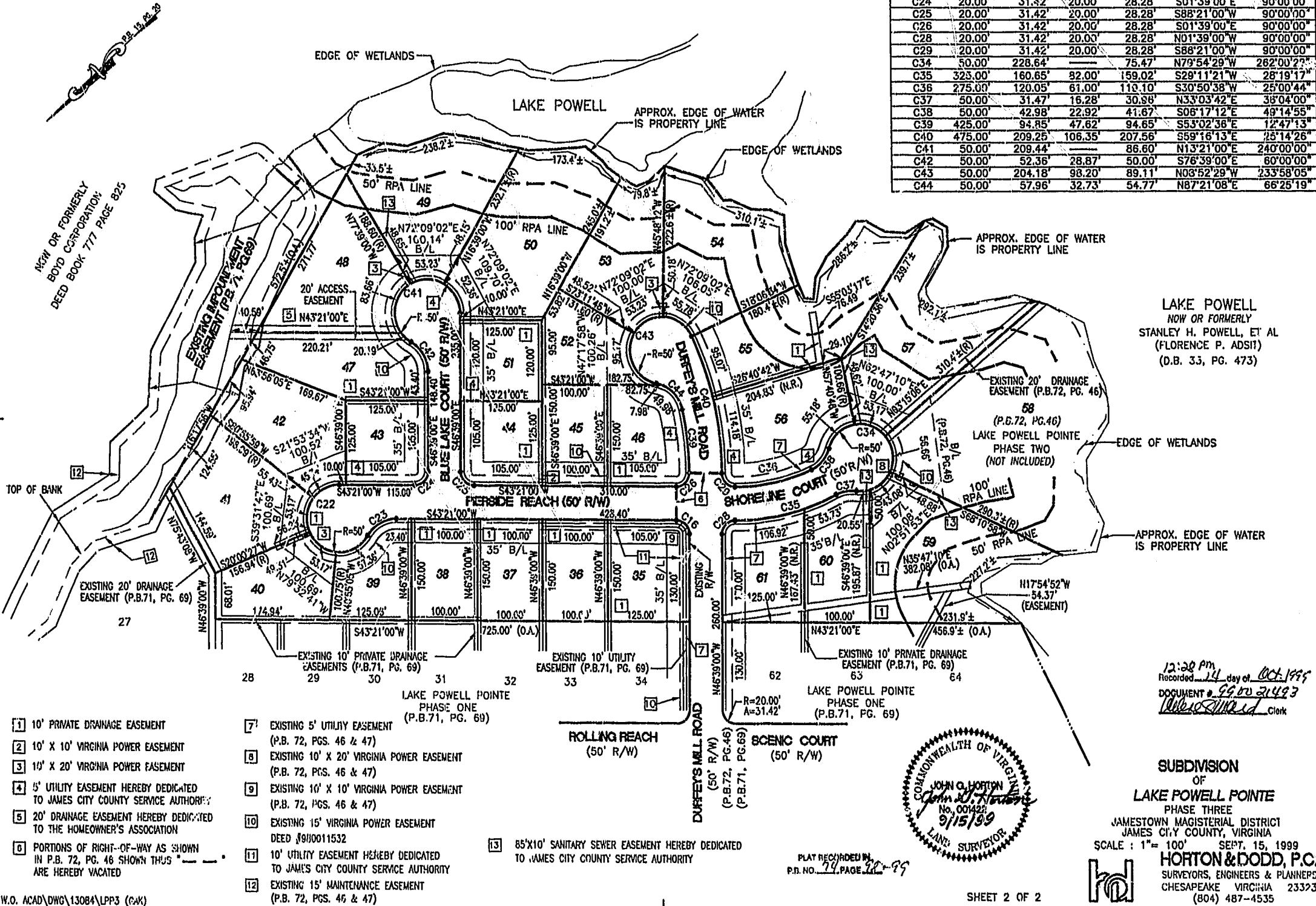
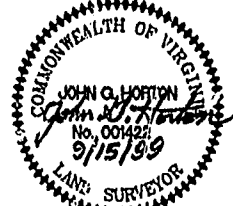


CURVE	RADIUS	LENGTH	TANGENT	CHORD	BEARING	DELTA
C16	20.00'	31.32'	20.00'	28.28'	N88°21'00"E	90°00'00"
C22	50.00'	209.44'	---	86.60'	N76°39'00"W	240°00'00"
C23	50.00'	52.36'	28.87'	50.00'	N13°21'00"E	60°00'00"
C24	20.00'	31.32'	20.00'	28.28'	S01°39'00"E	90°00'00"
C25	20.00'	31.42'	20.00'	28.28'	S88°21'00"W	90°00'00"
C26	20.00'	31.42'	20.00'	28.28'	S01°39'00"E	90°00'00"
C28	20.00'	31.42'	20.00'	28.28'	N01°39'00"W	90°00'00"
C29	20.00'	31.42'	20.00'	28.28'	S88°21'00"W	90°00'00"
C34	50.00'	228.64'	---	75.47'	N79°54'29"W	282°00'29"
C35	323.00'	160.65'	82.00'	159.02'	S29°11'21"W	28°19'17"
C36	275.00'	120.05'	61.00'	110.10'	S30°50'38"W	25°00'44"
C37	50.00'	31.47'	16.28'	30.98'	N33°03'42"E	38°04'00"
C38	50.00'	42.98'	22.92'	41.67'	S06°17'12"E	49°14'55"
C39	425.00'	94.85'	47.62'	94.65'	S53°02'36"E	12°47'13"
C40	475.00'	209.25'	106.35'	207.56'	S59°16'13"E	25°14'26"
C41	50.00'	209.44'	---	86.60'	N13°21'00"E	240°00'00"
C42	50.00'	52.36'	28.87'	50.00'	S76°39'00"E	60°00'00"
C43	50.00'	204.18'	98.20'	89.11'	N08°52'29"W	233°58'05"
C44	50.00'	57.96'	32.73'	54.77'	N87°21'08"E	66°25'19"



LAKE POWELL
 NOW OR FORMERLY
 STANLEY H. POWELL, ET AL
 (FLORENCE P. ADSIT)
 (D.B. 33, PG. 473)

12:28 Pm
 Recorded 14 day of Oct 1999
 DOCUMENT # 99-0021493
 [Signature] Clerk



SUBDIVISION
 OF
LAKE POWELL POINT
 PHASE THREE
 JAMESTOWN MAGISTERIAL DISTRICT
 JAMES CITY COUNTY, VIRGINIA
 SCALE: 1" = 100' SEPT. 15, 1999
HORTON & DODD, P.C.
 SURVEYORS, ENGINEERS & PLANNERS
 CHESAPEAKE VIRGINIA 23323
 (804) 487-4535

- [1] 10' PRIVATE DRAINAGE EASEMENT
- [2] 10' X 10' VIRGINIA POWER EASEMENT
- [3] 10' X 20' VIRGINIA POWER EASEMENT
- [4] 5' UTILITY EASEMENT HEREBY DEDICATED TO JAMES CITY COUNTY SERVICE AUTHORITY
- [5] 20' DRAINAGE EASEMENT HEREBY DEDICATED TO THE HOMEOWNER'S ASSOCIATION
- [6] PORTIONS OF RIGHT-OF-WAY AS SHOWN IN P.B. 72, PG. 46 SHOWN THUS ARE HEREBY VACATED
- [7] EXISTING 5' UTILITY EASEMENT (P.B. 72, PGS. 46 & 47)
- [8] EXISTING 10' X 20' VIRGINIA POWER EASEMENT (P.B. 72, PGS. 46 & 47)
- [9] EXISTING 10' X 10' VIRGINIA POWER EASEMENT (P.B. 72, PGS. 46 & 47)
- [10] EXISTING 15' VIRGINIA POWER EASEMENT DEED #090011532
- [11] 10' UTILITY EASEMENT HEREBY DEDICATED TO JAMES CITY COUNTY SERVICE AUTHORITY
- [12] EXISTING 15' MAINTENANCE EASEMENT (P.B. 72, PGS. 46 & 47)
- [13] 85'X10' SANITARY SEWER EASEMENT HEREBY DEDICATED TO JAMES CITY COUNTY SERVICE AUTHORITY

PLAT RECORDED IN
 P.B. NO. 79, PAGE 28-99