

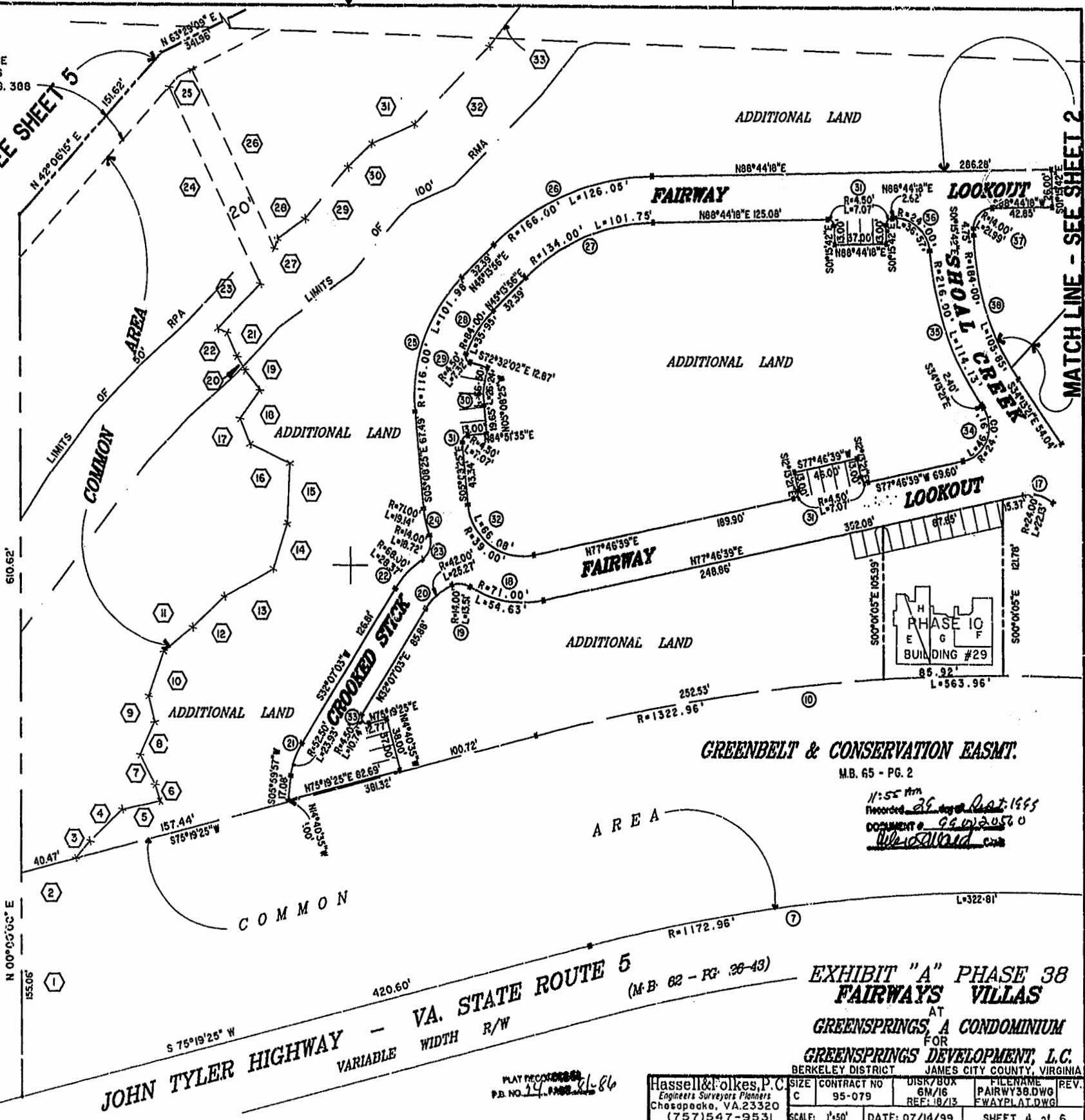
EXIST. 20' JAMES CITY COUNTY SERVICE AUTHORITY SAN. SEWER EASEMENT AS SHOWN IN AS-BUILT LOCATION, D.B. 141 - PG. 308



MATCH LINE - SEE SHEET 5

MATCH LINE - SEE SHEET 2

46-I-01-0-0001  
"GREENSPRINGS PLANTATION"  
(08 322, PG 254)



GREENBELT & CONSERVATION EASMT.

M.B. 65 - PG. 2

11:55 AM  
Recorded 26  
DOCUMENT # 99020560  
W. Caldwell, Inc.

VA. STATE ROUTE 5  
JOHN TYLER HIGHWAY - VARIABLE WIDTH R/W  
(M.B. 62 - PG. 38-43)

EXHIBIT "A" PHASE 38  
FAIRWAYS VILLAS  
AT  
GREENSPRINGS, A CONDOMINIUM  
FOR  
GREENSPRINGS DEVELOPMENT, L.C.

BERKELEY DISTRICT JAMES CITY COUNTY, VIRGINIA

Hassell & Folkes, P.C. Engineers Surveyors Planners Chesapeake, VA. 23320 (757) 547-9531	SIZE	CONTRACT NO	DISK/BOX	FILENAME	REV.
	C	95-079	6M/16	FAIRWY38.DWG	
	SCALE: 1"=50'	DATE: 07/14/99	REF: 18/13	FWAYPLAT.DWG	SHEET 4 of 6

PLAY RECORDED  
P.D. NO. 14-1-1999