

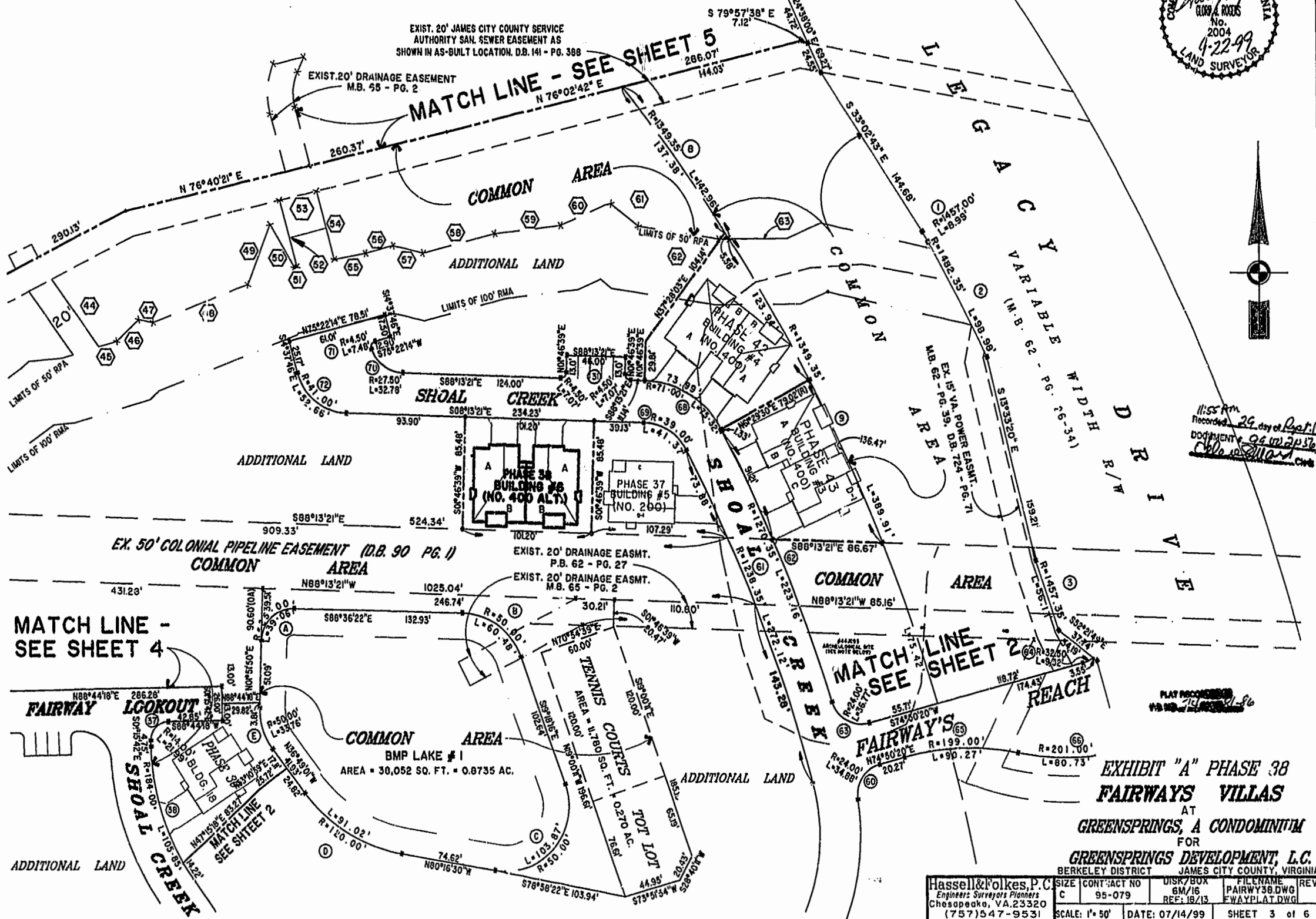
46-1-01-0-0001
"GREENSPRINGS PLANTATION"
(DB 322, PG 254)



EXIST. 20' JAMES CITY COUNTY SERVICE
AUTHORITY SAN. SEWER EASEMENT AS
SHOWN IN AS-BUILT LOCATION, D.B. 141 - PG. 388

EXIST. 20' DRAINAGE EASEMENT
M.B. 55 - PG. 2

MATCH LINE - SEE SHEET 5



11:55 AM
Recorded 29 day of April 1999
DOCUMENT # 9672236
Clary A. Rivers

PLAT PREPARED BY
7/18/98

**EXHIBIT "A" PHASE 38
FAIRWAYS VILLAS**
AT
GREENSPRINGS, A CONDOMINIUM
FOR
GREENSPRINGS DEVELOPMENT, L.C.
BERKELEY DISTRICT JAMES CITY COUNTY, VIRGINIA

Hassell & Folkes, P.C. Engineers Surveyors Planners Chesapeake, VA 23320 (757) 547-9531	SIZE	CONT. ACT NO	DISK/BOX	FILENAME
	C	95-079	6M/16	FAIRWAY38.DWG
SCALE: 1" = 50'	DATE: 07/14/99	REF: 18/13	REV:	FAWAYPLAT.DWG
		SHEET 3 of 6		