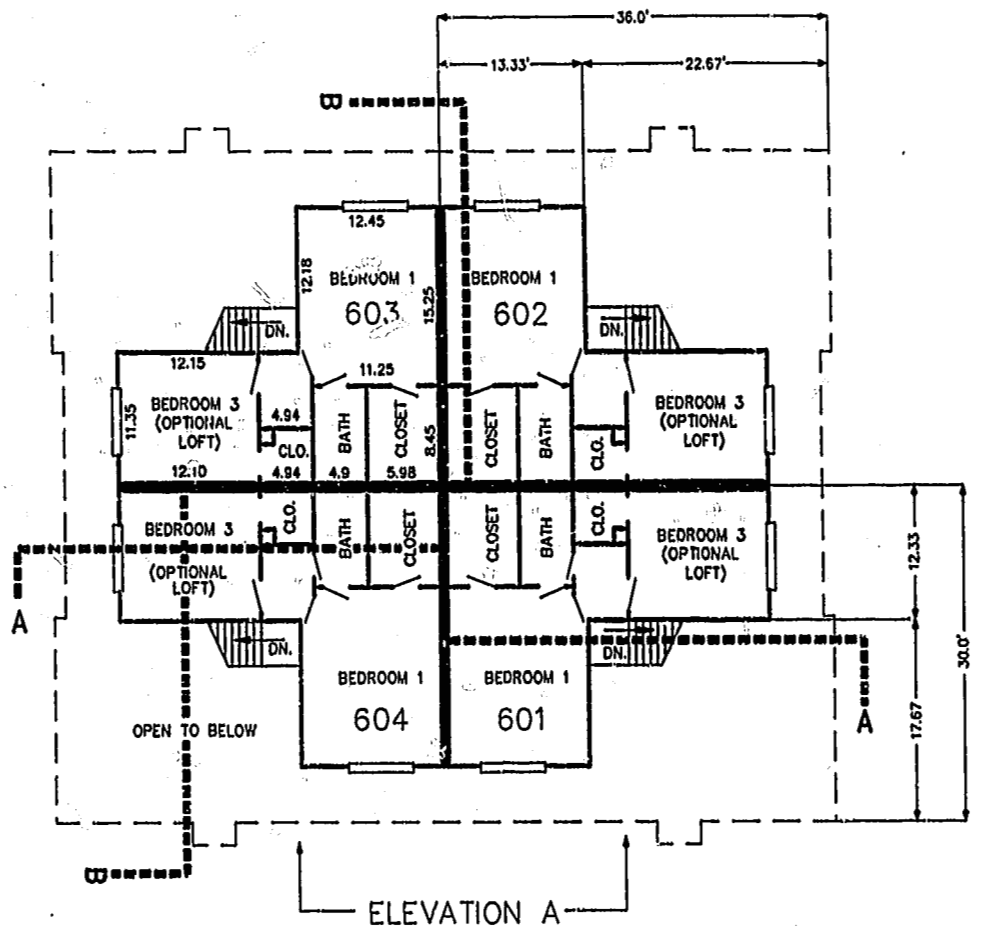


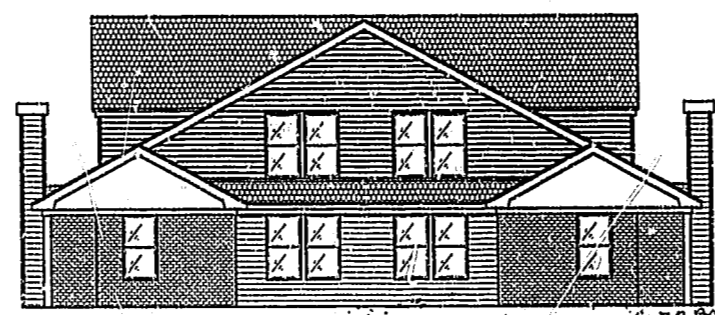
FIRST FLOOR PLAN
(UNIT 603 IS TYPICAL)



SECOND FLOOR PLAN
(UNIT 603 IS TYPICAL)



ELEVATION A

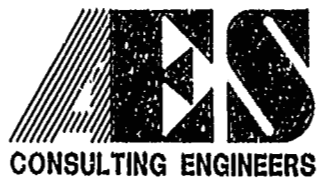


ELEVATION B

PLAT RECORDED IN
P.B. NO. 74-64-69

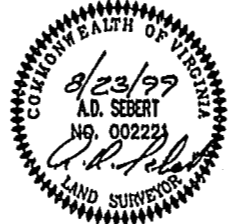
4:37 PM
Recorded 22 days Recd. 1999
DOCUMENT # 991201
Clerk

08.26.99-14.55 8395PH15.DWG JFS



5248 Olde Towne Road, Suite 1
Williamsburg, Virginia 23188
(757) 253-0040
Fax (757) 220-8994

PLAT OF CONDOMINIUM
WESTGATE AT WILLIAMSBURG,
A CONDOMINIUM
PHASE THREE
OWNED BY: 752 L.L.C.,
A VIRGINIA LIMITED LIABILITY COMPANY
CITY OF WILLIAMSBURG VIRGINIA



No.	DATE	REVISION / COMMENT / NOTE	BY

Designed GTW/ADS	Drawn JFS
Scale 1" = 10'	Date 8/23/99
Project No. 8395-6	
Drawing No. 5 OF 6	