

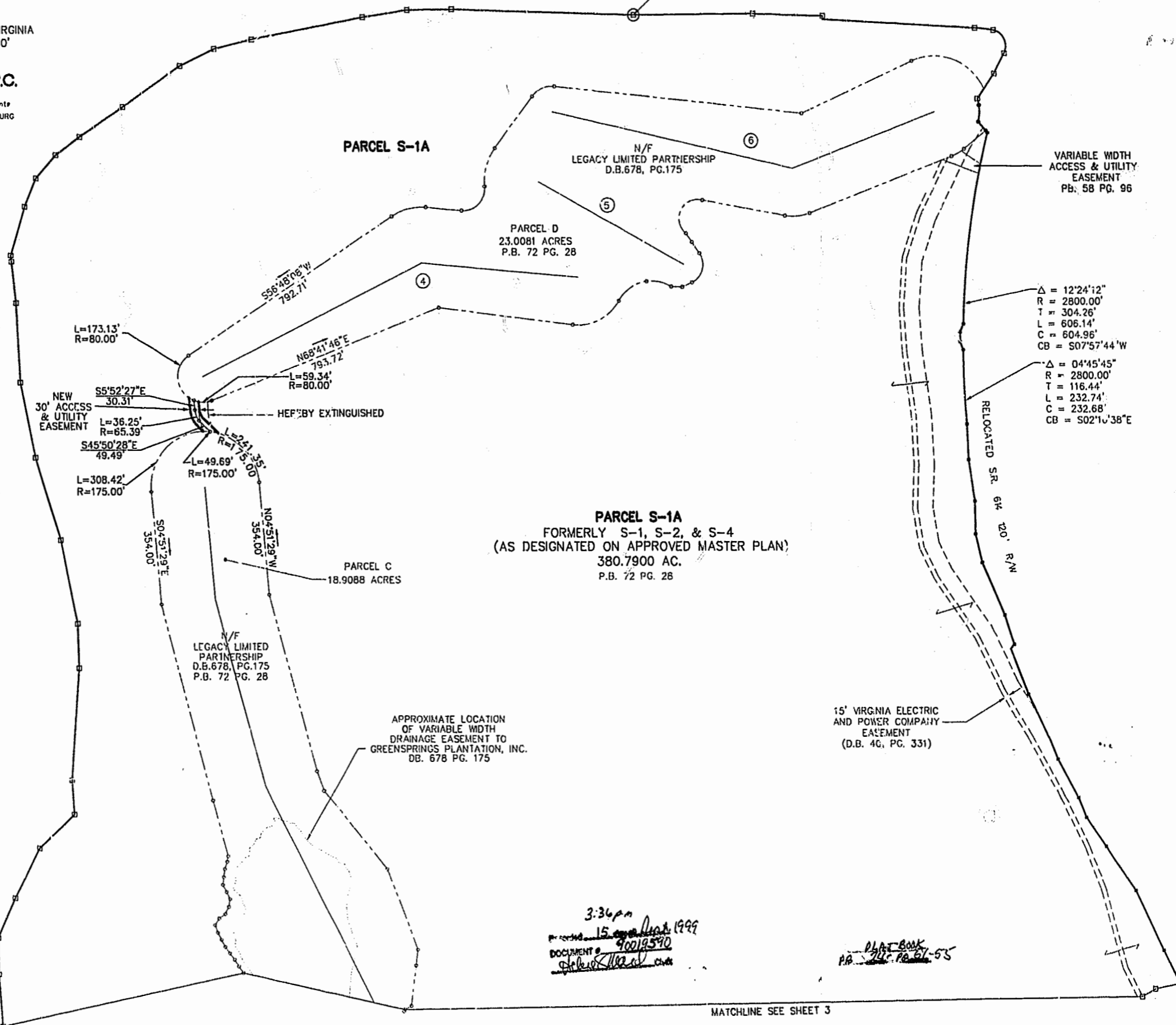
AMENDED PLAT
 SHOWING
 RELOCATION OF ACCESS EASEMENT
 FOR
 LEGACY (GREENSPRINGS) LIMITED PARTNERSHIP
 A VIRGINIA LIMITED PARTNERSHIP
 AND
 JAMESTOWN, L.L.C.
 BERKELEY DISTRICT JAMES CITY COUNTY, VIRGINIA
 DATE: 5/27/99 SCALE: 1"=200'
 SHEET 2 OF 5



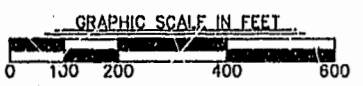
BRICK BAT ROAD STATE ROUTE 813
 30' R/W

N 3623563.613
 E 11971239.481
 (NAD83)

74 INC 52



PARCEL S-1A
 FORMERLY S-1, S-2, & S-4
 (AS DESIGNATED ON APPROVED MASTER PLAN)
 380.7900 AC.
 P.B. 72 PG. 28



N344437.022
 E2489018.359

3:36 pm
 15 May 1999
 DOCUMENT # 90019590
 [Signature]

PLAT BOOK
 PA 74C PG 51-55

MATCHLINE SEE SHEET 3