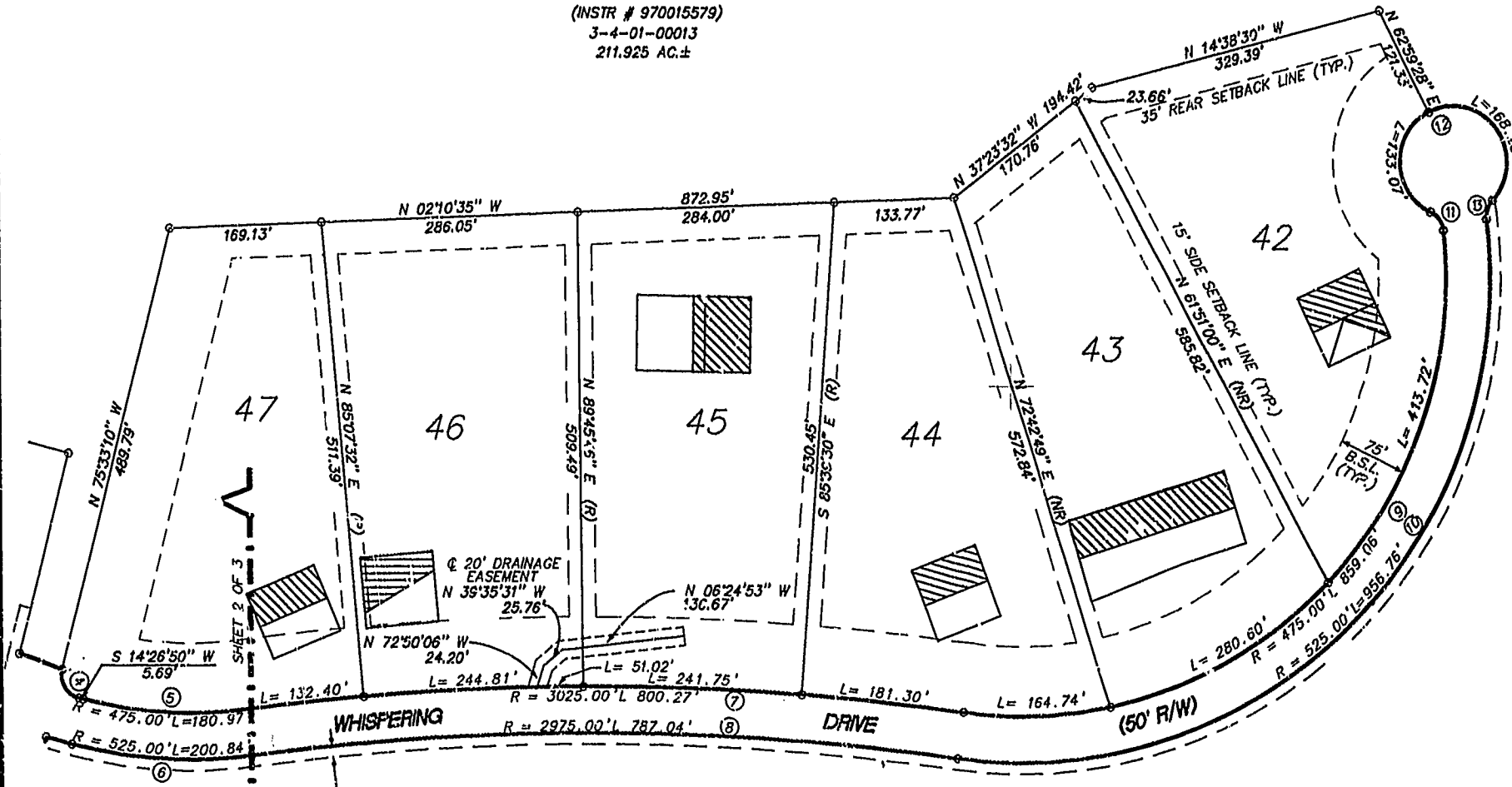


SUBDIVISION PLAT  
OF  
THE RETREAT  
PHASE ONE, SECTION ONE  
FOR  
LHIW-3, LLC  
STONEHOUSE DISTRICT  
JAMES CITY COUNTY, VIRGINIA  
MAY 17 1999, SHEET 3 OF 3



SEE NOTE 1 ON SHEET 1 OF 3

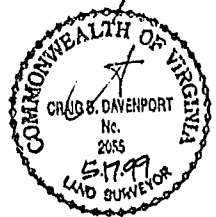
RESIDUAL PARCEL  
PROPERTY OF LHIW-3, LLC  
(INSTR # 970015579)  
3-4-01-00013  
211.925 AC.±



LEGEND  
[Hatched Box] PRIMARY DRAIN FIELD  
[White Box] RESERVE DRAIN FIELD

NOTE:  
1. UNLESS OTHERWISE NOTED ALL DRAINAGE EASEMENTS ARE TO BE PRIVATELY MAINTAINED.  
2. ALL STREETS ARE HEREBY DEDICATED FOR PUBLIC USE.

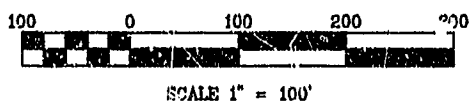
RESIDUAL PARCEL  
PROPERTY OF LHIW-3, LLC  
(INSTR # 970015579)  
3-4-01-00013  
211.925 AC.±



1:40 pm  
Recorded 31 day of Aug 1999  
DOCUMENT # 990015579  
Helena S. Ward, Clerk of Circuit Court  
By: Dawn R. Mates, Sp. Usher

STATE OF VIRGINIA  
COUNTY OF JAMES CITY  
IN THE CLERK'S OFFICE OF THE CIRCUIT COURT FOR THE COUNTY  
OF JAMES CITY THE 31st DAY OF August, 1999 THIS  
MAP WAS PRESENTED AND ADMITTED TO RECORD AS THE LAW  
DIRECTS IN PLAT BOOK 74 PAGE 46

TESTE: Helena S. Ward, Clerk of Circuit Court  
Dawn R. Mates, Sp. Usher  
CLERK



PLAT RECORDED IN  
P.B. NO. 44, PAGE 44-46

SEE SHEET 1 OF 3 FOR NOTES AND CERTIFICATIONS  
SEE SHEET 2 OF 3 FOR CURVE TABLES AND LOT AREA TABLES

**Rickmond Engineering, Inc.**  
1643 Merrimac Trail  
Williamsburg, VA 23185  
Voice: (757)229-1776  
Fax: (757)229-4683  
www.rickmond.com  
Engineering  
Surveying  
Land Planning

Checked By: C.B.D.	Drawn By: M.C.G.	Scale: 1"=100'	Date: 5/17/99
-----------------------	---------------------	-------------------	------------------