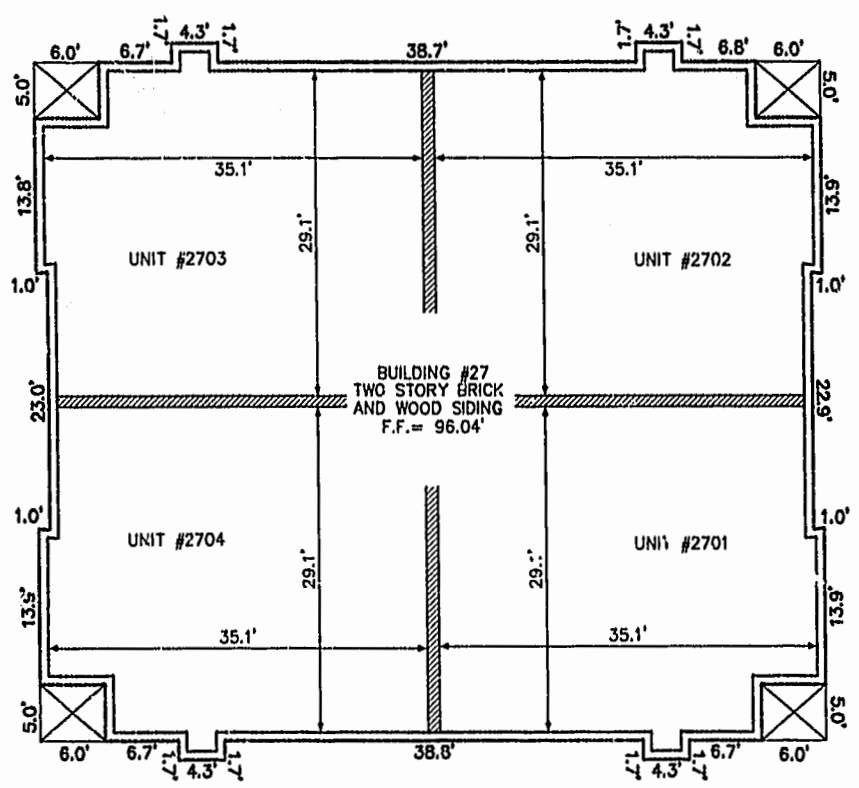
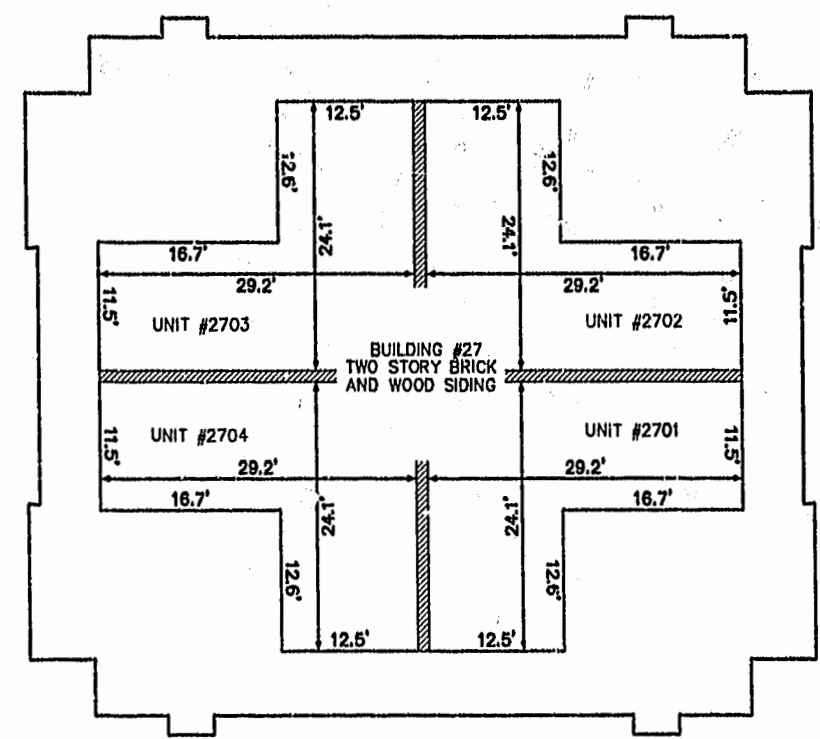


BUILDING NUMBER	UNIT NUMBER	STREET ADDRESS
27	2701	2701 WESTGATE CIRCLE
27	2702	2702 WESTGATE CIRCLE
27	2703	2703 WESTGATE CIRCLE
27	2704	2704 WESTGATE CIRCLE

THIS PLAT OF CORRECTION IS TO CORRECT THE NUMBERING OF UNITS 2701-2704 ON SHEETS 5 AND 6 OF A PLAT RECORDED AT P.B 73, PAGES 41-46. THIS IS THE ONLY CORRECTION TO THE ABOVE REFERENCED PLAT.

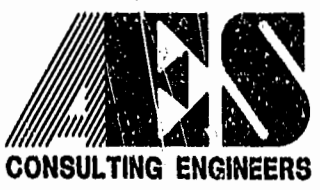


FRONT OF BUILDING
FIRST FLOOR



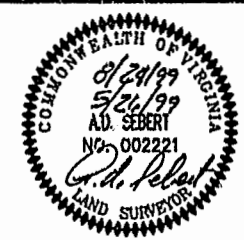
FRONT OF BUILDING
SECOND FLOOR

08.24.99-09.18 83956P03.DWG JFS



5248 Olde Towne Road, Suite 1
Williamsburg, Virginia 23108
(757) 253-0040
Fax (757) 220-8994

PLAT OF CORRECTION
PLAT OF CONDOMINIUM
WESTGATE AT WILLIAMSBURG,
A CONDOMINIUM
PHASE ONE
 OWNED BY: 752 L.L.C.,
 A VIRGINIA LIMITED LIABILITY COMPANY
 CITY OF WILLIAMSBURG VIRGINIA



No.	DATE	REVISION / COMMENT / NOTE	BY
1	8/24/99	UNIT NUMBERS REVISED SHEETS 5 AND 6	JFS

Designed GTW/ADS	Drawn JFS
Scale 1" = 10'	Date 5/26/99
Project No. 8395-6	
Drawing No. 4 OF 6	