

46-1-01-0-0001
"GREENSPRINGS PLANTATION"
(DB 322, PG 254)

EXIST. 20' JAMES CITY COUNTY SERVICE
AUTHORITY SAN. SEWER EASEMENT AS
SHOWN IN AS-BUILT LOCATION. D.B. 141 - PG. 388

EXIST. 20' DRAINAGE EASEMENT
M.B. 65 - PG. 2

EXIST. 20' DRAINAGE EASMT.
M.B. 65 - PG. 2

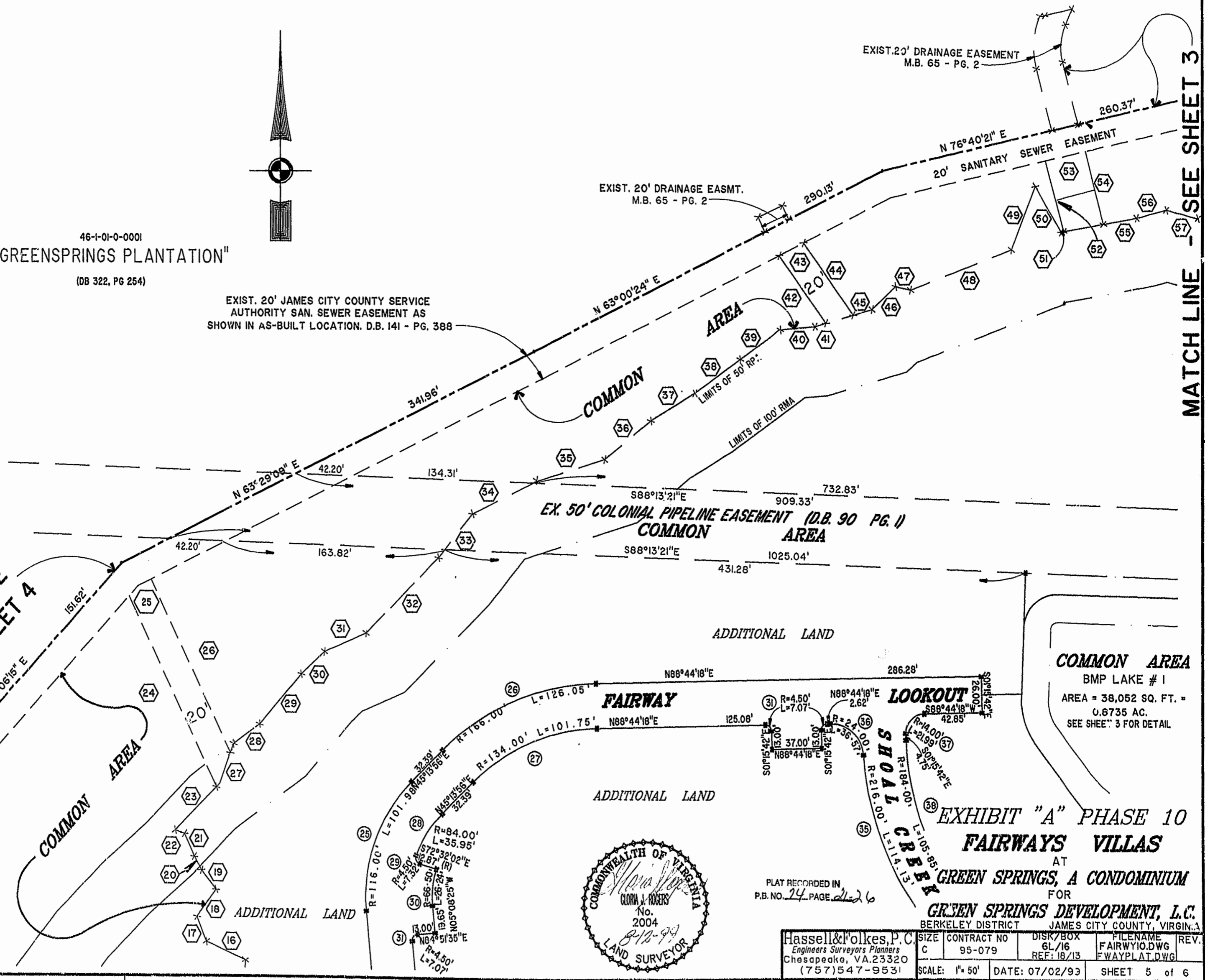
MATCH LINE - SEE SHEET 3

MATCH LINE
SEE SHEET 4

N 42° 06' 16" E
610.62'

N 00° 00' 00" E

3:23 pm
Recorded 19 day of Aug 1999
DOCUMENT # 96421726
Clerk



COMMON AREA
BMP LAKE # 1
AREA = 38,052 SQ. FT. =
0.8735 AC.
SEE SHEET 3 FOR DETAIL

**EXHIBIT "A" PHASE 10
FAIRWAYS VILLAS**
AT
GREEN SPRINGS, A CONDOMINIUM
FOR
GREEN SPRINGS DEVELOPMENT, L.C.
BERKELEY DISTRICT JAMES CITY COUNTY, VIRGINIA



PLAT RECORDED IN
P.B. NO. 24 PAGE 22 of 26

Hassell & Folkes, P.C. Engineers Surveyors Planners Chesapeake, VA 23320 (757) 547-9531	SIZE	CONTRACT NO	DISK/BOX	FILENAME	REV.
	C	95-079	6L/16	FAIRWAY10.DWG	
SCALE: 1" = 50'		DATE: 07/02/93	REF: 18/13	FWAYPLAT.DWG	