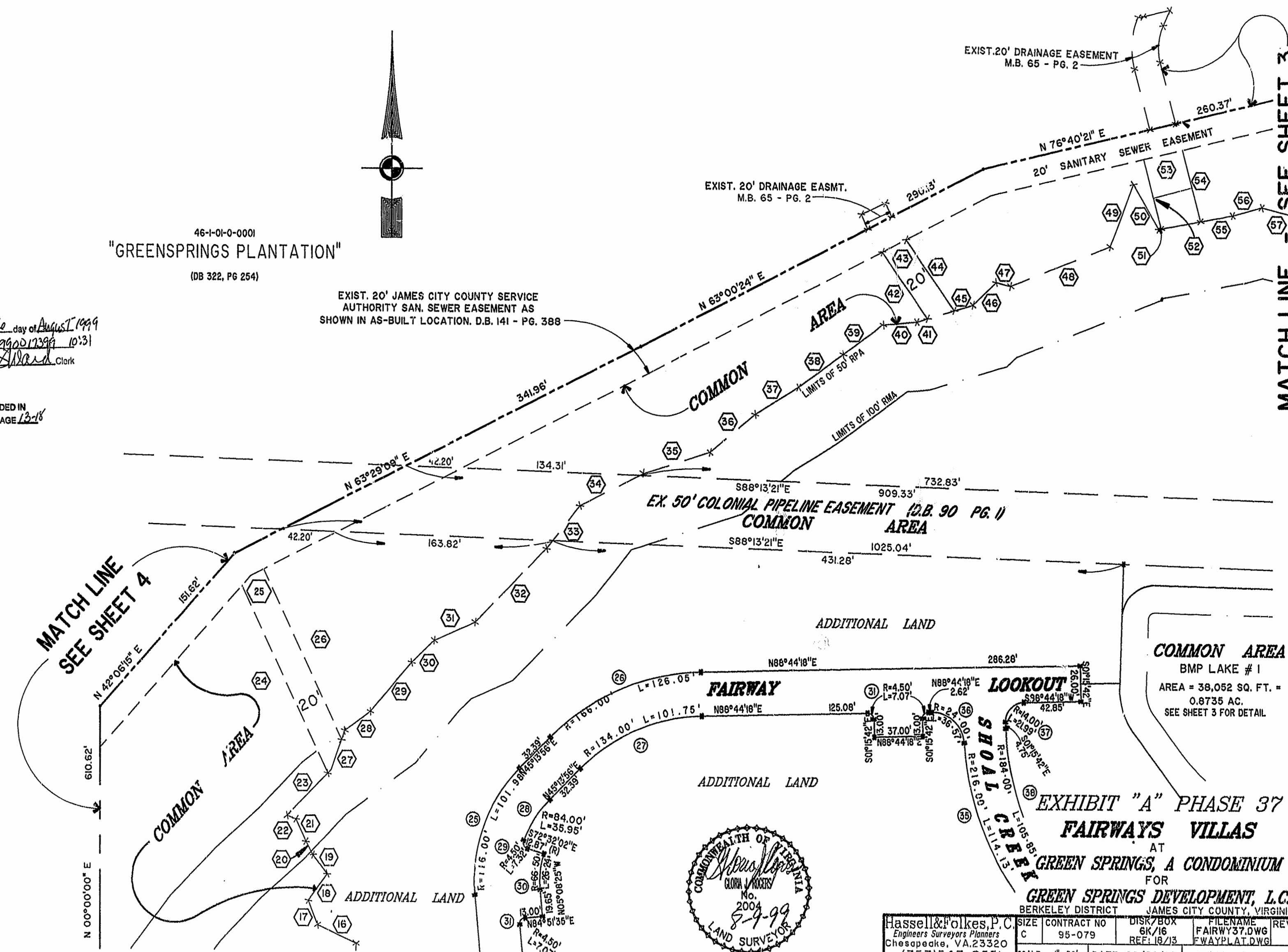


46-1-01-0-0001
"GREENSPRINGS PLANTATION"
(DB 322, PG 254)

EXIST. 20' JAMES CITY COUNTY SERVICE
AUTHORITY SAN. SEWER EASEMENT AS
SHOWN IN AS-BUILT LOCATION. D.B. 141 - PG. 388

Recorded 16 day of August 1999
DOCUMENT # 990012399 10:31
Debrae Shaver Clerk

PLAT RECORDED IN
P.B. NO. 74 PAGE 13-18

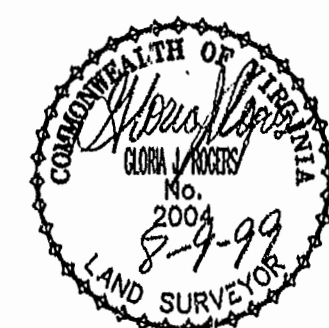


MATCH LINE
SEE SHEET 4

MATCH LINE - SEE SHEET 3

COMMON AREA
BMP LAKE # 1
AREA = 38,052 SQ. FT. =
0.8735 AC.
SEE SHEET 3 FOR DETAIL

**EXHIBIT "A" PHASE 37
FAIRWAYS VILLAS**
AT
GREEN SPRINGS, A CONDOMINIUM
FOR
GREEN SPRINGS DEVELOPMENT, L.C.
BERKELEY DISTRICT JAMES CITY COUNTY, VIRGINIA



Hassell & Folkes, P.C. Engineers Surveyors Planners Chesapeake, VA 23320 (757) 547-9531	SIZE CONTRACT NO 6K/16 95-079	DATE: 06/28/99	FILENAME FAIRWY37.DWG FWAYPLAT.DWG	REV. SHEET 5 of 6
--	-------------------------------------	----------------	--	----------------------