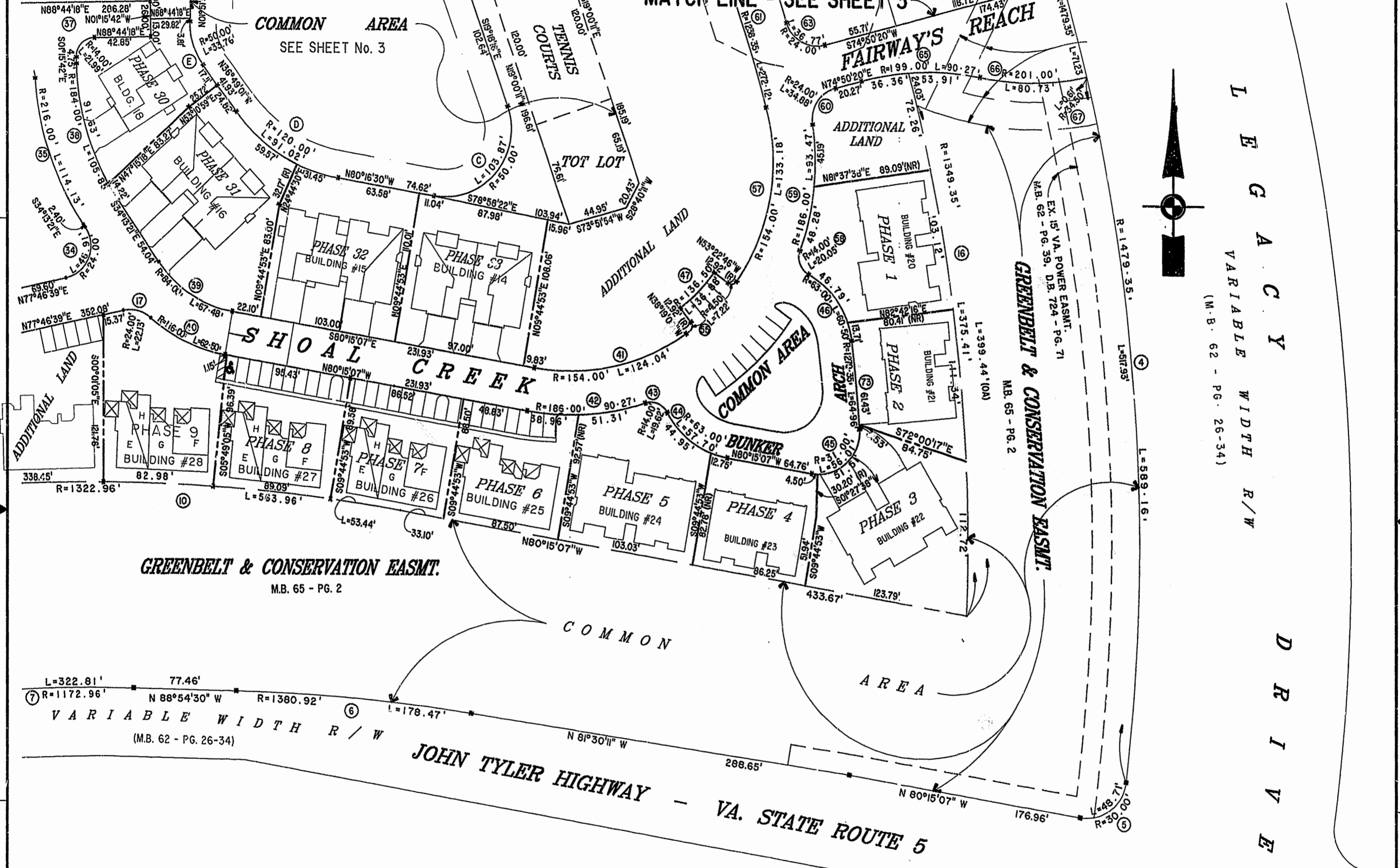


MATCH LINE SEE SHEET 4

MATCH LINE - SEE SHEET 3



GREENBELT & CONSERVATION EASMT.  
MB. 65 - PG. 2

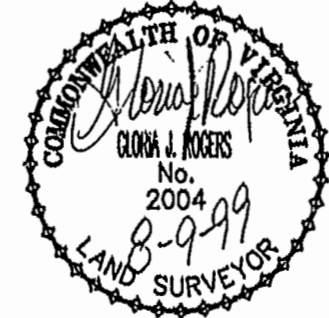
VARIABLE WIDTH R/W  
(M.B. 62 - PG. 26-34)

JOHN TYLER HIGHWAY - VA. STATE ROUTE 5

EXHIBIT "A" PHASE 37  
FAIRWAYS VILLAS  
AT  
GREEN SPRINGS, A CONDOMINIUM  
FOR  
GREEN SPRINGS DEVELOPMENT, L.C.  
BERKELEY DISTRICT JAMES CITY COUNTY, VIRGINIA

PLAT RECORDED IN  
P.B. NO. 74 PAGE 13-18

Recorded 16 day of August 1999  
DOCUMENT # 990017399 10:31  
Clerk



Hassell & Folkes, P.C. Engineers Surveyors Planners Chesapeake, VA. 23320 (757) 547-9531	SIZE CONTRACT NO C 95-079	DATE: 06/28/99	FILENAME FAIRWAY37.DWG FWAYPLAT.DWG	REV. SHEET 2 of 6
---	------------------------------	----------------	---	----------------------