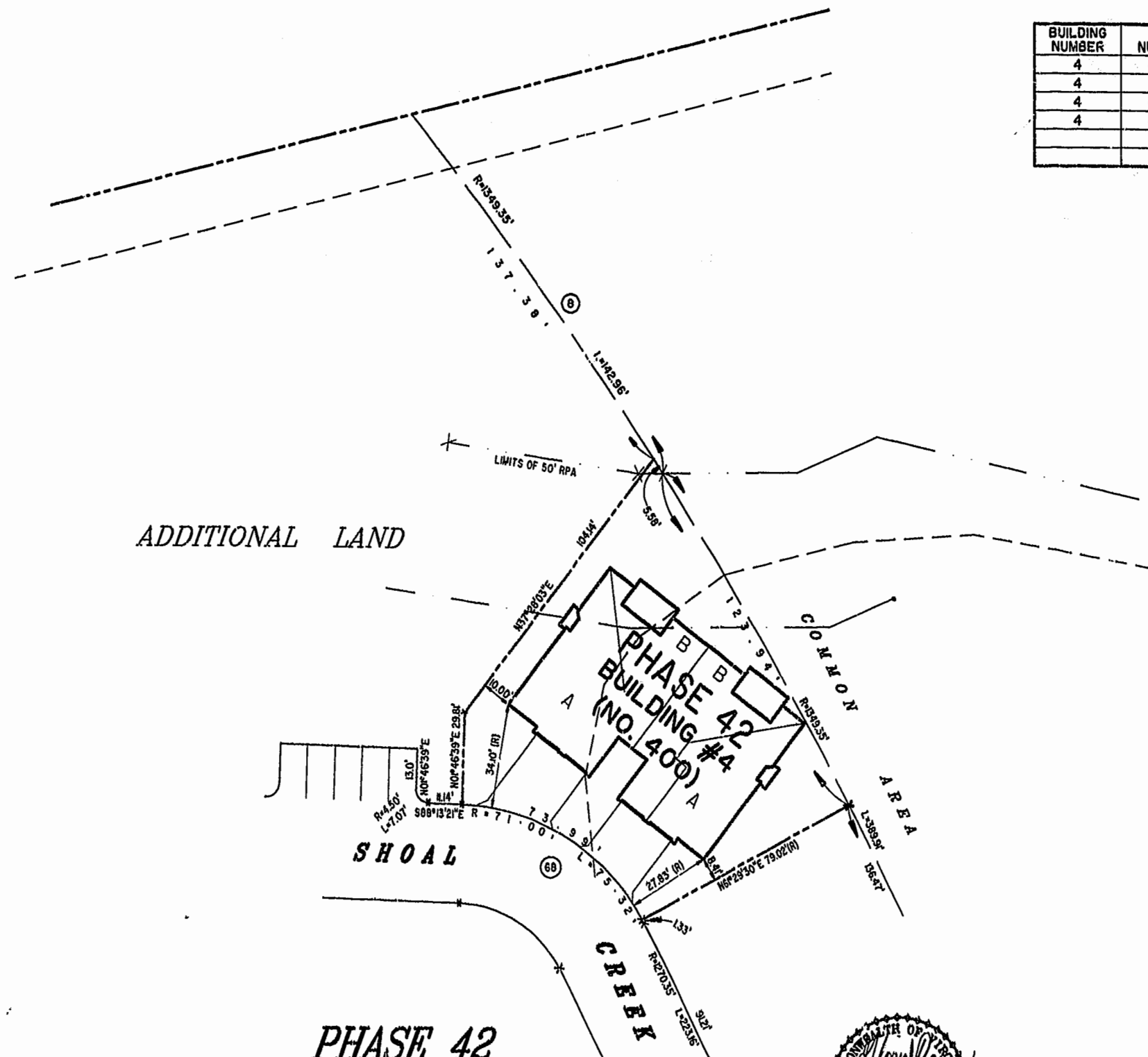


BUILDING NUMBER	UNIT NUMBER	UNIT TYPE	STREET ADDRESS
4	4-150	A	150 SHOAL CREEK
4	4-152	B	152 SHOAL CREEK
4	4-154	B	154 SHOAL CREEK
4	4-156	A	156 SHOAL CREEK



ADDITIONAL LAND

PHASE 42

AREA = 10,278 SQ. FT. = 0.236 AC.

1:45 pm
 Recorded 22 day of July 1995
 DOCUMENT # 99-01556
 [Signature] Clerk



PLAT RECORDED BY
 P.D. NO. 73 PAGE 98

**EXHIBIT "A" PHASE 42
 FAIRWAYS VILLAS**
 AT
GREENSPRINGS, A CONDOMINIUM
 FOR
GREENSPRINGS DEVELOPMENT, L.C.
 BERKELEY DISTRICT JAMES CITY COUNTY, VIRGINIA

Hassel & Folkes, P.C. Engineers Surveyors Planners Chesapeake, VA 23320 (757) 547-9531	SIZE C CONTRACT NO 95-079	DISK/BOX 6/16 REF 10/13	FILE NAME FAIRWAY42.DWG FWAYPLAT.DWG	REV.
SCALE: 1" = 25'	DATE: 06/14/99	SHEET 7 of 7		

