

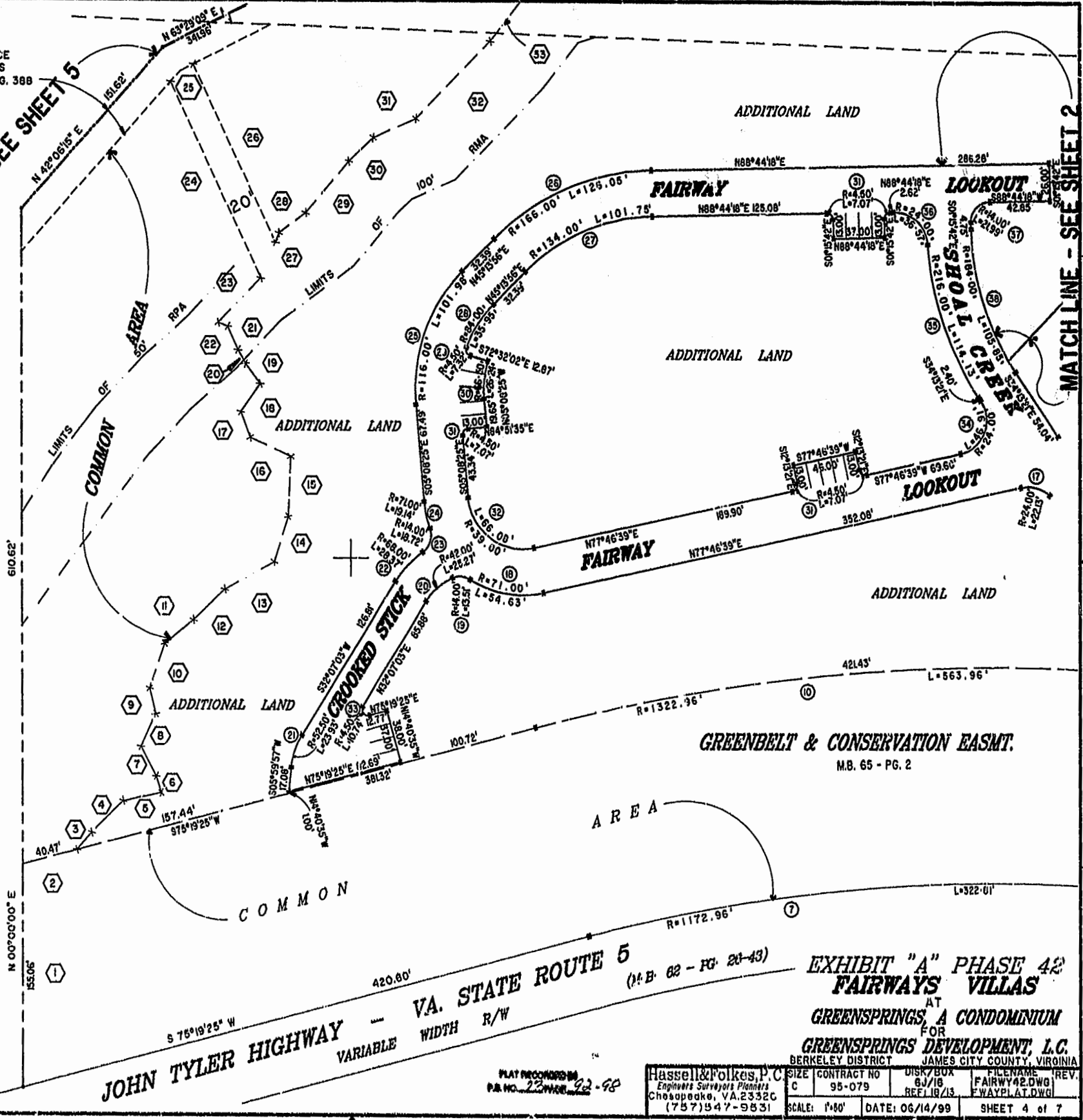
EXIST. 20' JAMES CITY COUNTY SERVICE AUTHORITY SAN. SEWER EASEMENT AS SHOWN IN AS-BUILT LOCATION. D.B. 141 - PG. 388



MATCH LINE - SEE SHEET 5

MATCH LINE - SEE SHEET 2

46-1-01-0-0001
"GREENSPRINGS PLANTATION"
(DB 322, PG 254)



1:45 pm
Recorded 22 July 1999
DOCUMENT # 99-15545
Hassell & Folkes, P.C.



VA. STATE ROUTE 5
(M.B. 62 - PG. 20-43)
JOHN TYLER HIGHWAY
VARIABLE WIDTH R/W

EXHIBIT "A" PHASE 42
FAIRWAYS VILLAS
AT
GREENSPRINGS, A CONDOMINIUM
FOR
GREENSPRINGS DEVELOPMENT, L.C.
BERKELEY DISTRICT JAMES CITY COUNTY, VIRGINIA

PLAT RECORDING
P.R. NO. 23-11-92-98

Hassell & Folkes, P.C. Engineers Surveyors Planners Chesapeake, VA. 23320 (757) 547-9831	SIZE: C CONTRACT NO: 95-079	DISK/BOX: 8J/18 REF: 18/13	FILENAME: FAIRWAY2.DWG FWAYPLAT.DWG	SCALE: 1"=80' DATE: 06/14/99	REV. SHEET 4 of 7
---	--------------------------------	-------------------------------	--	---------------------------------	-------------------