

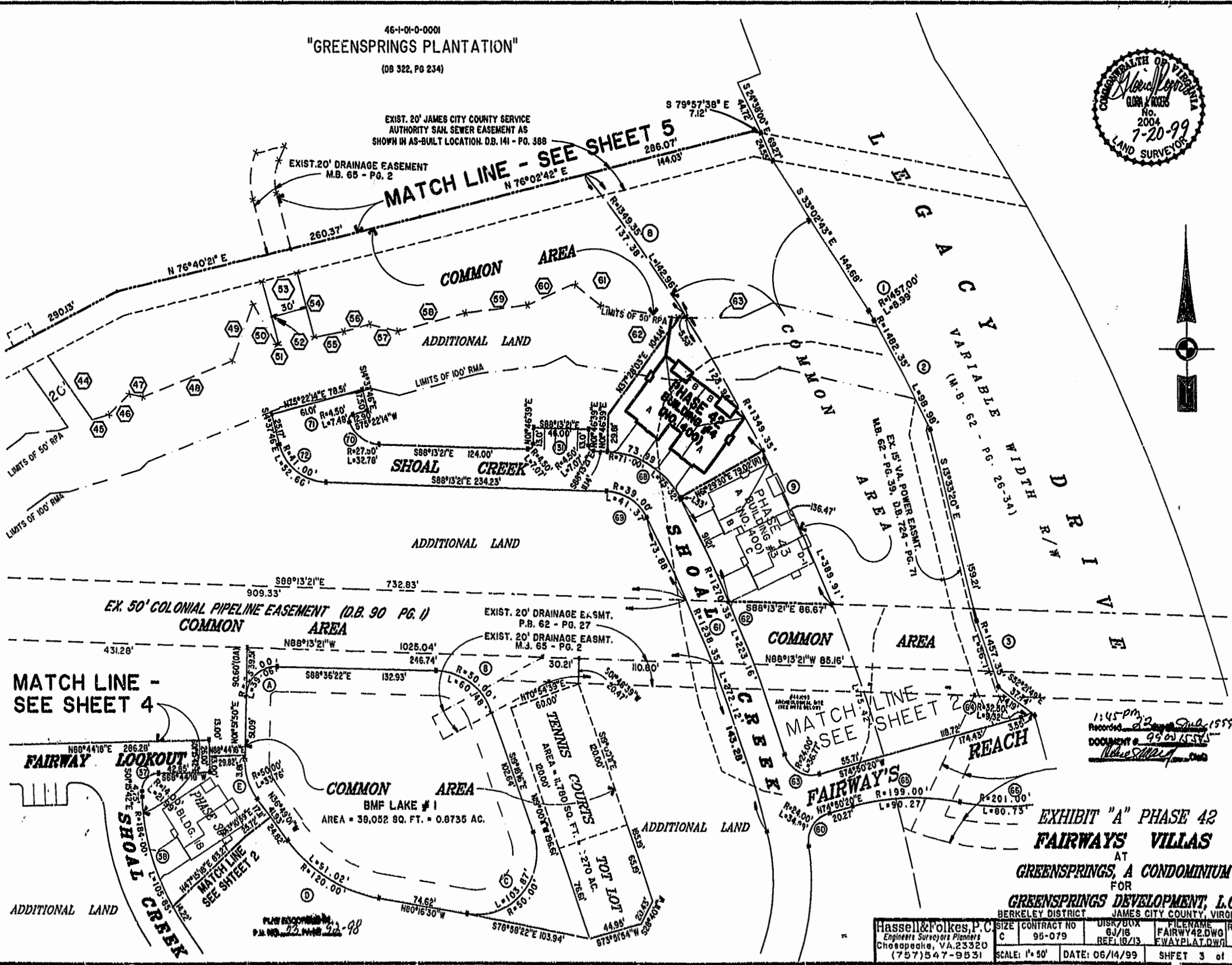
"GREENSPRINGS PLANTATION"
46-1-01-0-0001
(08 322, PG 234)



EXIST. 20' JAMES CITY COUNTY SERVICE
AUTHORITY SAN. SEWER EASEMENT AS
SHOWN IN AS-BUILT LOCATION. D.B. 141 - PG. 388

EXIST. 20' DRAINAGE EASEMENT
M.B. 65 - PG. 2

MATCH LINE - SEE SHEET 5
N 76°02'42" E



1:45 pm
Recorded 2/2/99
DOCUMENT # 99021554
Nelson & Sons

**EXHIBIT "A" PHASE 42
FAIRWAYS VILLAS
AT
GREENSPRINGS, A CONDOMINIUM
FOR
GREENSPRINGS DEVELOPMENT, L.C.**

Hassell & Folkes, P.C. Engineers Surveyors Planners Chesapeake, VA 23320 (757)547-9531	SIZE	CONTRACT NO	DISK/BOX	FILENAME	REV.
	C	95-079	6J/16	FAIRWAY42.DWG	
	SCALE: 1" = 30'	DATE: 06/14/99	REF: 18/13	FWAYPLAT.DWG	

PLAN REVISIONS
P.M. NO. 73, 1448, 24-98