

RECORD MERIDIAN
PLAT BOOK 63, PAGE 11

NOTE: CHESAPEAKE & POTOMAC EASEMENT, DB 7 PG 478 (1900). UNABLE TO IDENTIFY THE LOCATION AND DUE TO THE AGE OF THE DEED PROBABLY DOES NOT AFFECT THE PROPERTY.

N OR F WARBURTON & MAHONE ESTATE TAX PARCEL 282-A-001

EXISTING VAR. WIDTH CITY OF WSMBG. SAN. SEWER & UTILITY EASEMENT (DB 75/507 & DB 80/481 (HATCHED AREAS HEREBY VACATED)

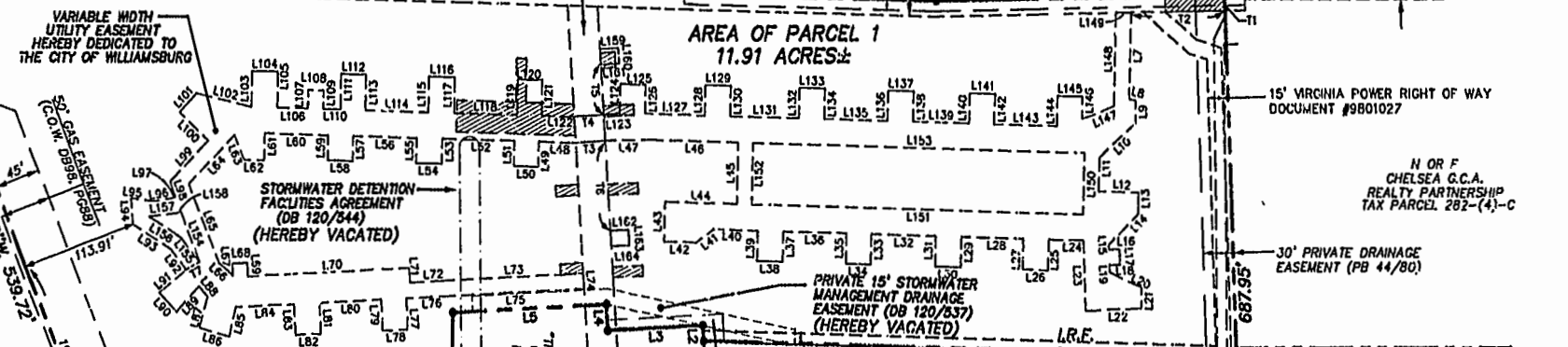
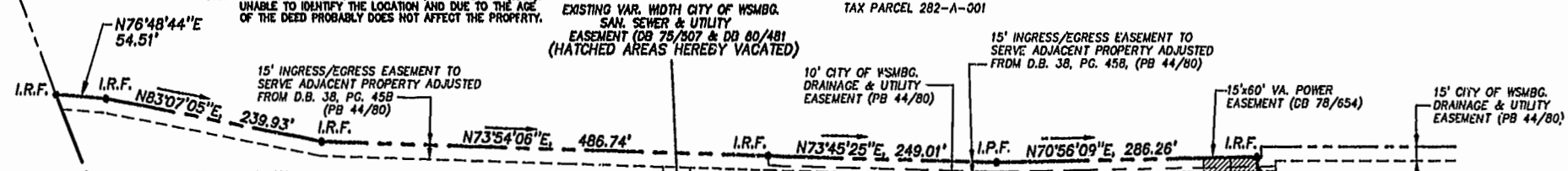
15' INGRESS/EGRESS EASEMENT TO SERVE ADJACENT PROPERTY ADJUSTED FROM D.B. 38, PG. 458, (PB 44/80)

10' CITY OF WSMBG. DRAINAGE & UTILITY EASEMENT (PB 44/80)

15' INGRESS/EGRESS EASEMENT TO SERVE ADJACENT PROPERTY ADJUSTED FROM D.B. 38, PG. 458, (PB 44/80)

15'x60' VA. POWER EASEMENT (DB 78/654)

15' CITY OF WSMBG. DRAINAGE & UTILITY EASEMENT (PB 44/80)



N OR F JAMESTOWN ACADEMY TAX PARCEL 281-03-A

LINE TABLE (VARIABLE WIDTH UTILITY EASEMENT)

NUMBER	BEARING	DISTANCE
L7	S16°08'41\"E	82.52'
L8	N88°33'53\"E	6.24'
L9	S17°33'38\"E	21.53'
L10	S29°54'27\"W	48.65'
L11	S16°08'41\"E	32.00'
L12	N74°38'51\"E	39.26'
L13	S17°23'28\"E	20.69'
L14	S27°18'18\"W	41.79'
L15	S19°15'00\"E	4.44'
L16	N70°45'00\"E	10.69'
L17	S19°15'00\"E	15.00'
L18	S70°45'00\"W	10.69'
L19	S19°15'00\"E	6.73'
L20	S82°45'59\"E	34.67'
L21	N6°46'50\"E	19.82'
L22	S69°53'08\"W	55.19'
L23	N19°15'00\"W	67.06'
L24	S73°51'19\"W	34.68'
L25	S16°08'41\"E	29.20'
L26	S73°51'19\"W	25.00'
L27	N16°08'41\"W	29.20'
L28	S73°51'19\"W	81.44'
L29	S16°08'41\"E	29.00'
L30	S73°51'19\"W	77.00'
L31	N16°08'41\"W	29.00'
L32	S73°51'19\"W	63.03'
L33	S16°08'41\"E	29.00'
L34	S73°51'19\"W	25.00'
L35	N16°08'41\"W	29.00'
L36	S73°51'19\"W	62.29'
L37	S16°08'41\"E	25.00'
L38	S73°51'19\"W	25.00'
L39	N16°08'41\"W	29.00'
L40	S73°51'19\"W	43.50'
L41	S36°58'15\"W	21.97'
L42	S73°51'19\"W	31.39'
L43	N16°08'41\"W	38.18'
L44	N73°51'19\"E	71.27'
L45	N16°08'41\"W	54.72'
L46	S73°51'19\"W	85.71'
L47	S71°12'14\"W	45.57'
L48	S73°51'19\"W	36.12'
L49	S16°08'41\"E	23.88'
L50	S73°51'19\"W	25.00'
L51	N16°08'41\"W	23.88'
L52	S73°51'19\"W	71.01'
L53	S16°08'41\"E	23.88'
L54	S73°51'19\"W	25.00'
L55	N16°08'41\"W	23.80'
L56	S73°51'19\"W	62.86'
L57	S16°08'41\"E	23.78'
L58	S73°51'19\"W	25.00'
L59	N16°08'41\"W	23.78'
L60	S73°51'19\"W	61.81'
L61	S16°08'41\"E	25.72'
L62	S73°51'19\"W	19.72'
L63	N40°02'54\"W	24.98'
L64	S28°14'40\"W	64.55'
L65	S38°38'41\"E	80.01'

LINE TABLE (VARIABLE WIDTH UTILITY EASEMENT)

NUMBER	BEARING	DISTANCE
L66	S65°45'18\"E	18.38'
L67	N20°45'18\"W	11.80'
L68	N69°14'42\"E	15.00'
L69	S20°45'18\"E	13.02'
L70	N69°14'42\"E	158.62'
L71	S20°45'18\"E	13.88'
L72	N69°14'42\"E	34.44'
L73	N69°14'42\"E	136.87'
L74	S20°45'18\"E	15.00'
L75	S69°14'42\"W	138.87'
L76	S69°14'42\"W	39.17'
L77	S20°45'18\"E	29.50'
L78	S69°14'42\"W	25.00'
L79	N20°45'18\"W	29.50'
L80	S69°14'42\"W	60.76'
L81	S20°45'18\"E	29.50'
L82	S69°14'42\"W	25.00'
L83	N20°45'18\"W	29.50'
L84	S69°14'42\"W	57.03'
L85	S04°17'53\"E	29.04'
L86	S88°40'08\"W	30.20'
L87	N02°22'58\"W	30.72'
L88	N56°33'00\"W	12.72'
L89	S25°48'50\"W	33.35'
L90	N60°28'05\"W	25.00'
L91	N33°23'32\"E	35.36'
L92	N56°32'00\"W	24.54'
L93	N74°22'25\"W	44.19'
L94	N21°33'44\"W	25.00'
L95	N80°18'19\"E	21.52'
L96	N64°08'54\"E	18.82'
L97	N51°21'19\"E	4.16'
L98	N38°38'41\"W	15.15'
L99	N28°14'40\"E	55.17'
L100	N63°45'20\"W	39.07'
L101	N28°14'40\"E	25.00'
L102	N85°38'26\"E	55.09'
L103	N16°08'41\"W	34.19'
L104	N73°51'19\"E	25.00'
L105	S16°08'41\"E	34.19'
L106	N73°51'19\"E	30.29'
L107	N16°08'41\"W	17.77'
L108	N73°51'19\"E	15.00'
L109	S16°08'41\"E	17.77'
L110	N73°51'19\"E	16.71'
L111	N16°08'41\"W	34.19'
L112	N73°51'19\"E	25.00'
L113	S16°08'41\"E	34.19'
L114	N73°51'19\"E	61.84'
L115	N16°08'41\"W	34.19'
L116	N73°51'19\"E	25.00'
L117	S16°08'41\"E	34.19'
L118	N73°51'19\"E	62.47'
L119	N16°08'41\"W	34.19'
L120	N73°51'19\"E	25.00'

LINE TABLE (VARIABLE WIDTH UTILITY EASEMENT)

NUMBER	BEARING	DISTANCE
L121	S16°08'41\"E	34.19'
L122	N73°51'19\"E	31.49'
L123	N69°25'24\"E	15.59'
L124	N16°08'41\"W	28.48'
L125	N73°51'19\"E	25.00'
L126	S16°08'41\"E	27.50'
L127	N73°51'19\"E	59.25'
L128	N16°08'41\"W	29.00'
L129	N73°51'19\"E	25.00'
L130	S16°08'41\"E	29.00'
L131	N73°51'19\"E	67.88'
L132	N16°08'41\"W	29.00'
L133	N73°51'19\"E	25.00'
L134	S16°08'41\"E	29.00'
L135	N73°51'19\"E	62.31'
L136	N16°08'41\"W	29.00'
L137	N73°51'19\"E	25.00'
L138	S16°08'41\"E	29.00'
L139	N73°51'19\"E	55.12'
L140	N16°08'41\"W	29.00'
L141	N73°51'19\"E	25.00'
L142	S16°08'41\"E	29.00'
L143	N73°51'19\"E	61.80'
L144	N16°08'41\"W	29.00'
L145	N73°51'19\"E	25.00'
L146	S16°08'41\"E	21.45'
L147	N61°32'40\"E	34.12'
L148	N16°08'41\"W	69.52'
L149	N70°56'09\"E	15.02'
L150	S16°08'41\"E	58.72'
L151	S73°51'19\"W	326.88'
L152	N16°08'41\"W	58.72'
L153	N73°51'19\"E	326.88'
L154	S38°38'41\"E	51.42'
L155	N56°33'02\"W	29.49'
L156	N74°53'26\"W	37.18'
L157	N65°11'45\"E	27.70'
L158	N51°21'19\"E	4.16'
L159	N89°17'15\"E	17.75'
L160	S20°42'31\"E	15.00'
L161	S69°17'15\"E	17.75'
L162	N89°17'15\"E	17.50'
L163	S20°42'45\"E	15.00'
L164	S69°17'15\"W	17.50'

THE LINES ONLY

NUMBER	BEARING	DISTANCE
11	S19°15'00\"E	15.00'
12	S7°05'09\"W	93.92'
13	N40°30'01\"W	29.78'
14	N42°41'39\"E	29.97'
15	N20°42'45\"W	47.61'
16	S20°42'45\"E	86.17'
17	N43°02'08\"E	15.21'

LINE TABLE (PROPERTY LINES)

NUMBER	BEARING	DISTANCE
L1	S73°51'19\"W	351.67'
L2	N20°45'18\"W	14.78'
L3	S69°14'42\"W	94.01'
L4	N20°45'18\"E	25.00'
L5	S69°14'42\"W	152.85'
L6	S16°08'41\"E	134.69'

AREA OF VARIABLE WIDTH UTILITY EASEMENT
72,335,5710 S.F.±
OR
1.661 ACRES±

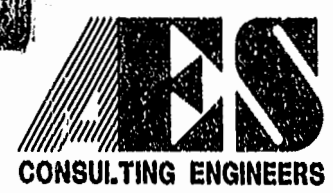
LEGEND
IRF= IRON ROD FOUND
IPF= IRON PIPE FOUND

PLAT RECORDED IN
PD NO. 12, PAGE 62

DELTA=01°58'47\"
RADIUS=335.00'
LENGTH=11.58'
TANGENT=5.79'
CHORD=11.57'
C.B.=S71°06'00\"W

PARCEL 1
752 L.L.C., A VIRGINIA LIMITED LIABILITY COMPANY
TAX PARCEL 281-07-00-001
DOC. #980305
ZONED B-2 & RM-2
(MULTI-FAMILY DWELLING DISTRICT)
SETBACK LIMITS
SIDE= 15'
REAR= 25'

NOTE:
THIS PROPERTY LIES IN ZONE X, (AREAS DETERMINED TO BE OUTSIDE THE 500 YEAR FLOOD PLAIN) PER F.I.R.M. #510294-0005 B, DATED 3/2/94.



5248 Olde Towne Road, Suite 1
Williamsburg, Virginia 23188
(757) 253-0040
Fax (757) 220-8994

PLAT SHOWING UTILITY EASEMENT
TO BE DEDICATED TO THE CITY OF WILLIAMSBURG
AND VARIOUS EASEMENTS TO BE VACATED
BEING PARCEL 1
OWNED BY 752 L.L.C.
A VIRGINIA LIMITED LIABILITY COMPANY
CITY OF WILLIAMSBURG VIRGINIA



No.	DATE	REVISION / COMMENT / NOTE	BY

Designed GTW/ADS	Drawn JES
Scale 1"= 100'	Date 12/25/98
Project No. 8395-6	
Drawing No. 10F4	