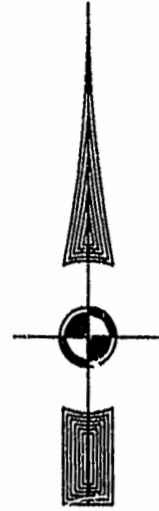
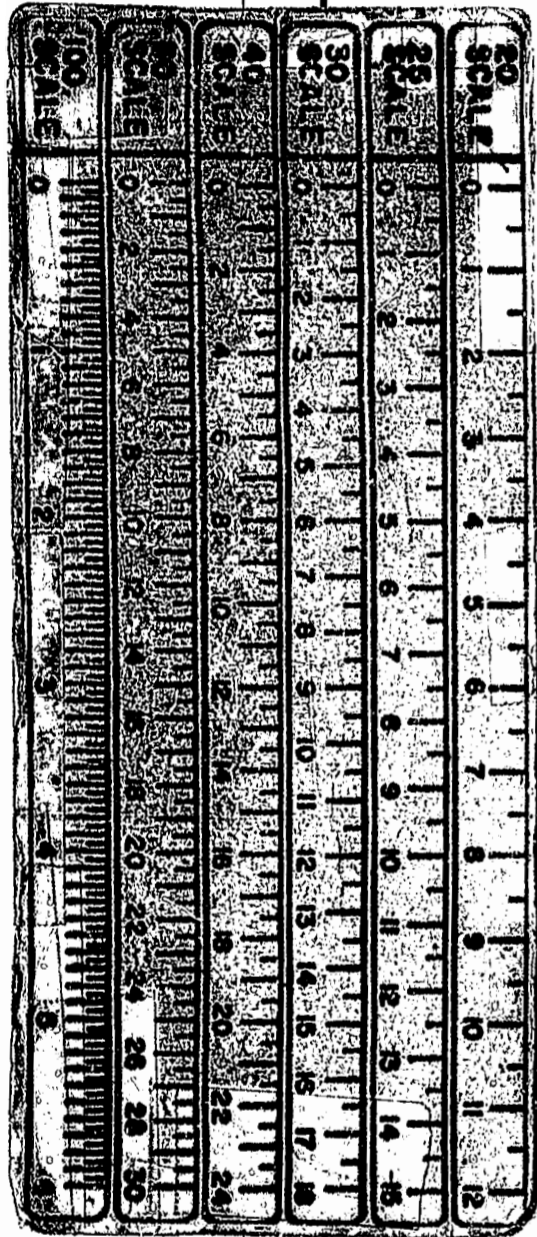


EXIST. 20' JAMES CITY COUNTY SERVICE AUTHORITY SAN. SEWER EASEMENT AS SHOWN IN AS-BUILT LOCATION. D.B. 141 - PG. 388

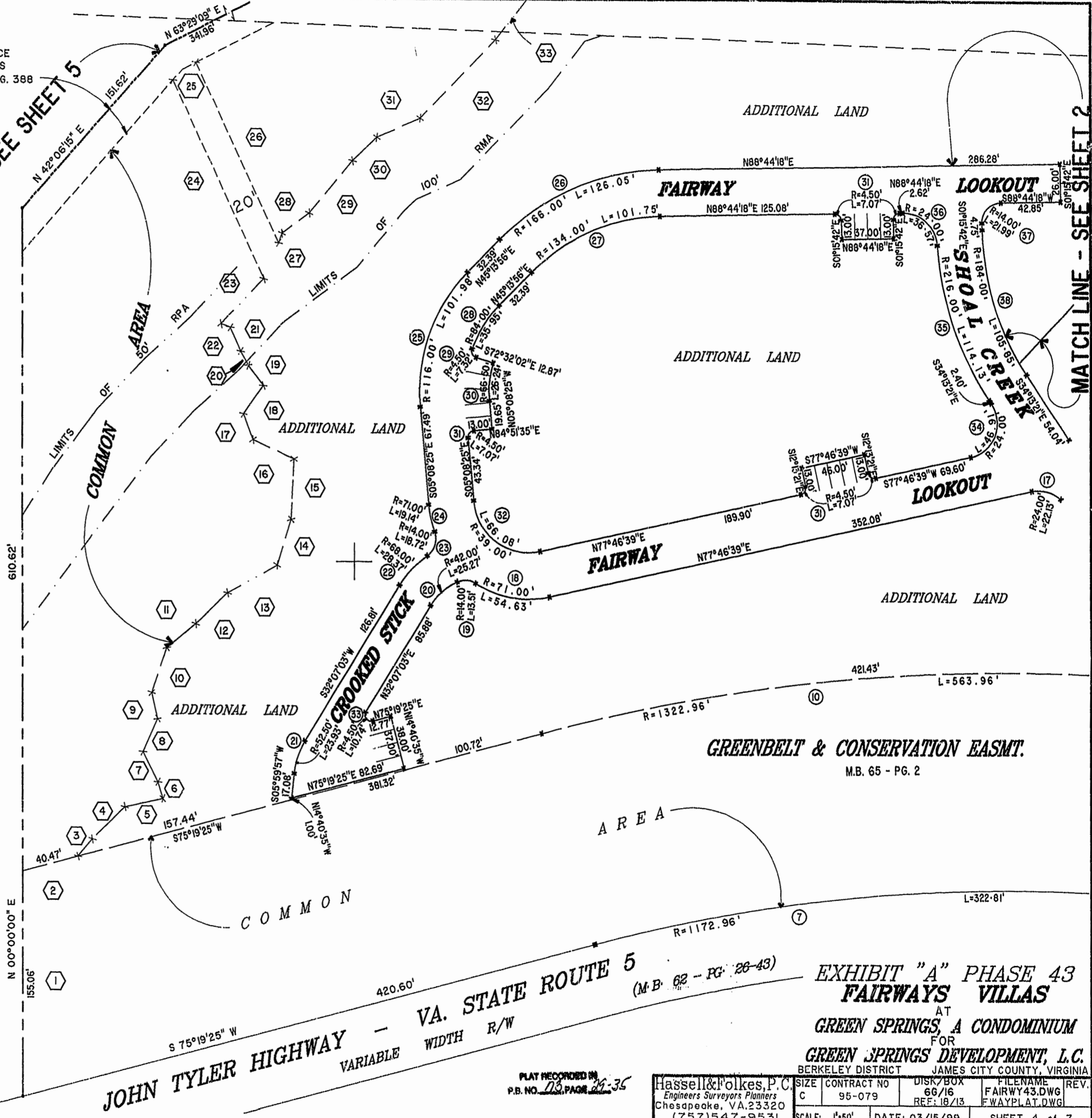


MATCH LINE - SEE SHEET 5

MATCH LINE - SEE SHEET 2



46-1-01-0-0001  
"GREENSPRINGS PLANTATION"  
(DB 322, PG 254)



1:57 PM  
Recorded 19 day of May 1999  
DOCUMENT # 99-00-10838  
Clerk

JOHN TYLER HIGHWAY - VA. STATE ROUTE 5  
VARIABLE WIDTH R/W  
(M.B. 62 - PG. 26-43)

GREENBELT & CONSERVATION EASMT.  
M.B. 65 - PG. 2

EXHIBIT "A" PHASE 43  
FAIRWAYS VILLAS  
AT  
GREEN SPRINGS, A CONDOMINIUM  
FOR  
GREEN SPRINGS DEVELOPMENT, L.C.

PLAT RECORDED IN  
P.B. NO. 73 PAGE 24-35

Hassel & Polkes, P.C. Engineers Surveyors Planners Chesapeake, VA. 23320 (757) 547-9531	SIZE CONTRACT NO C 95-079	DISK/BOX 66/16 REF: 18/13	FILENAME FWAYPLAT.DWG	REV.
SCALE: 1"=50'	DATE: 03/15/99	SHEET 4 of 7		