

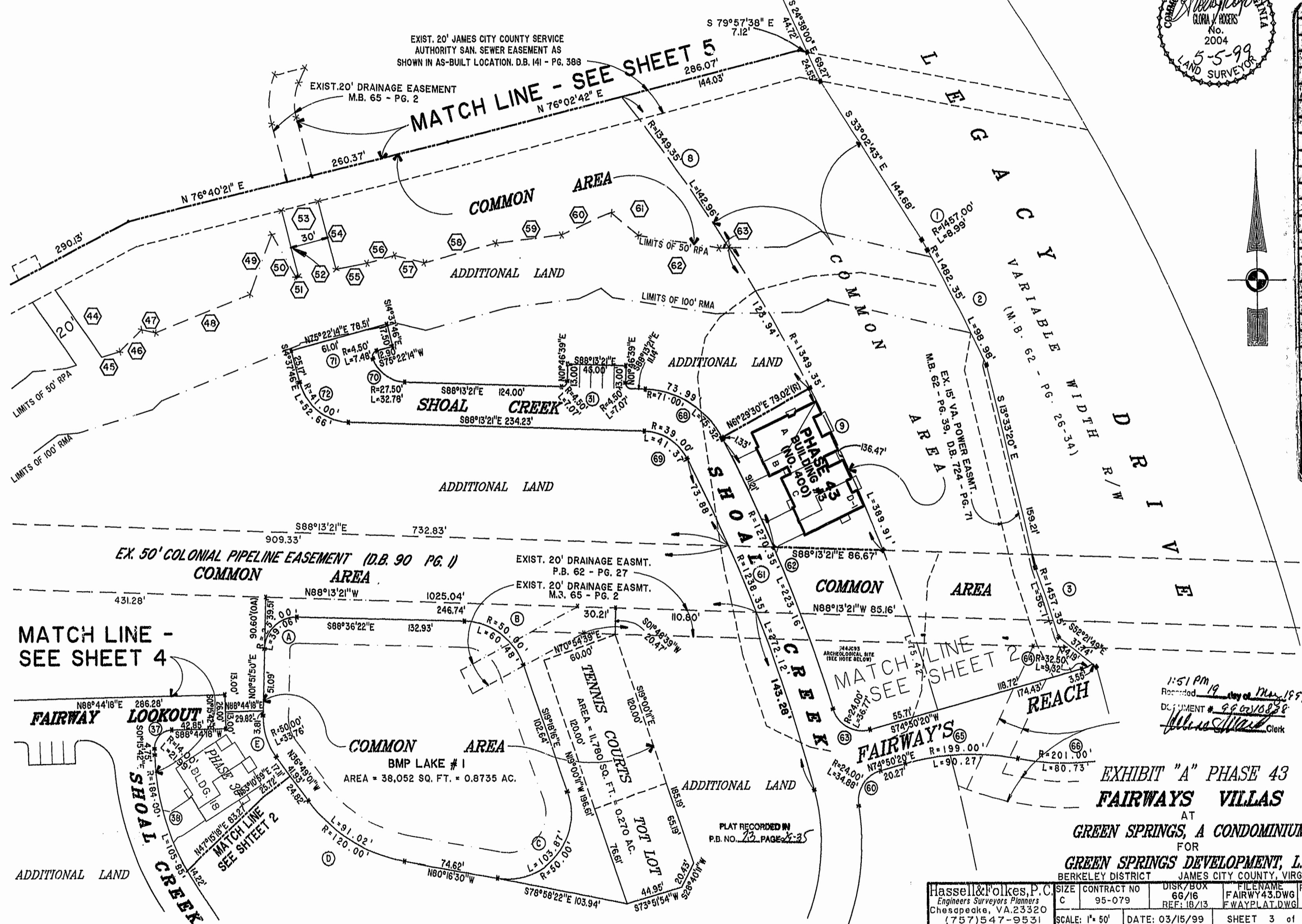
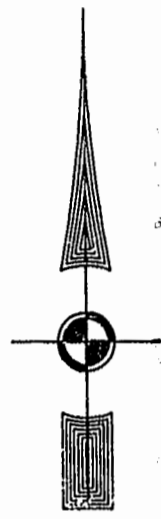
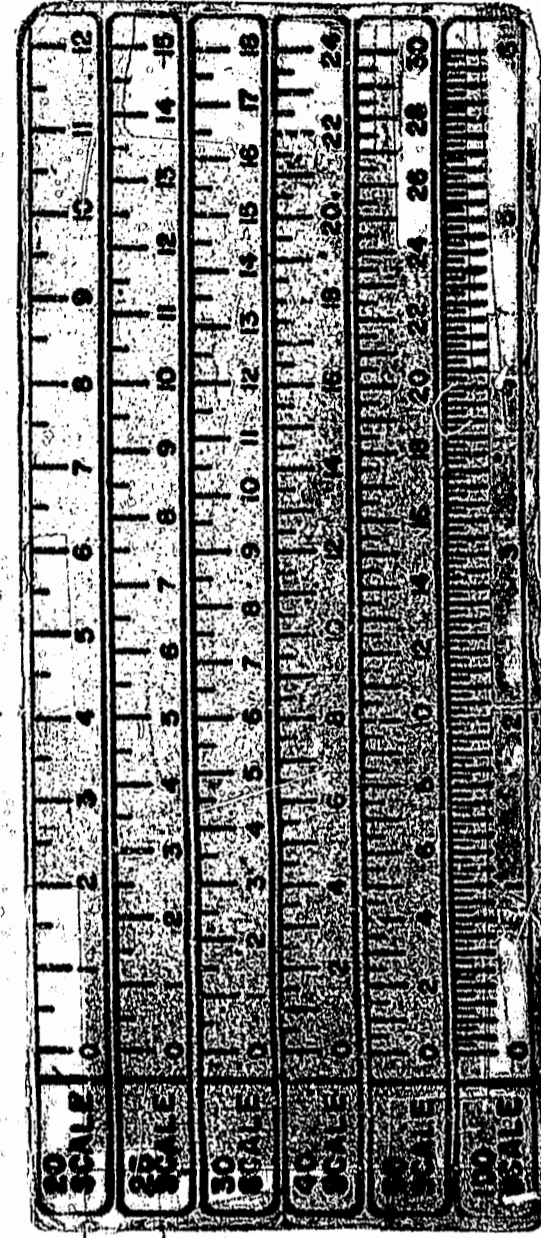
46-1-01-0-0001
"GREENSPRINGS PLANTATION"

(DB 322, PG 254)

EXIST. 20' JAMES CITY COUNTY SERVICE
AUTHORITY SAN. SEWER EASEMENT AS
SHOWN IN AS-BUILT LOCATION. D.B. 141 - PG. 388

EXIST. 20' DRAINAGE EASEMENT
M.B. 65 - PG. 2

MATCH LINE - SEE SHEET 5
N 76°02'42" E



EX. 50' COLONIAL PIPELINE EASEMENT (D.B. 90 PG. 1)
COMMON AREA

MATCH LINE -
SEE SHEET 4

MATCH LINE
SEE SHEET 2

1:51 PM 19 day of May 1999
Recorded
DOCUMENT # 99-0210838
Gloria W. Rogers Clerk

EXHIBIT "A" PHASE 43
FAIRWAYS VILLAS

AT
GREEN SPRINGS, A CONDOMINIUM
FOR
GREEN SPRINGS DEVELOPMENT, L.C.
BERKELEY DISTRICT JAMES CITY COUNTY, VIRGINIA

PLAT RECORDED IN
P.B. NO. 73 PAGE 23

Hassell & Folkes, P.C. Engineers Surveyors Planners Chesapeake, VA 23320 (757) 547-9531	SIZE	CONTRACT NO	DISK/BOX	FILENAME	REV.
	C	95-079	66/16 REF: 18/13	FAIRWAY43.DWG FWAYPLAT.DWG	
SCALE: 1" = 50'		DATE: 03/15/99	SHEET 3 of 7		