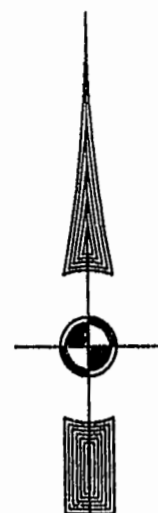
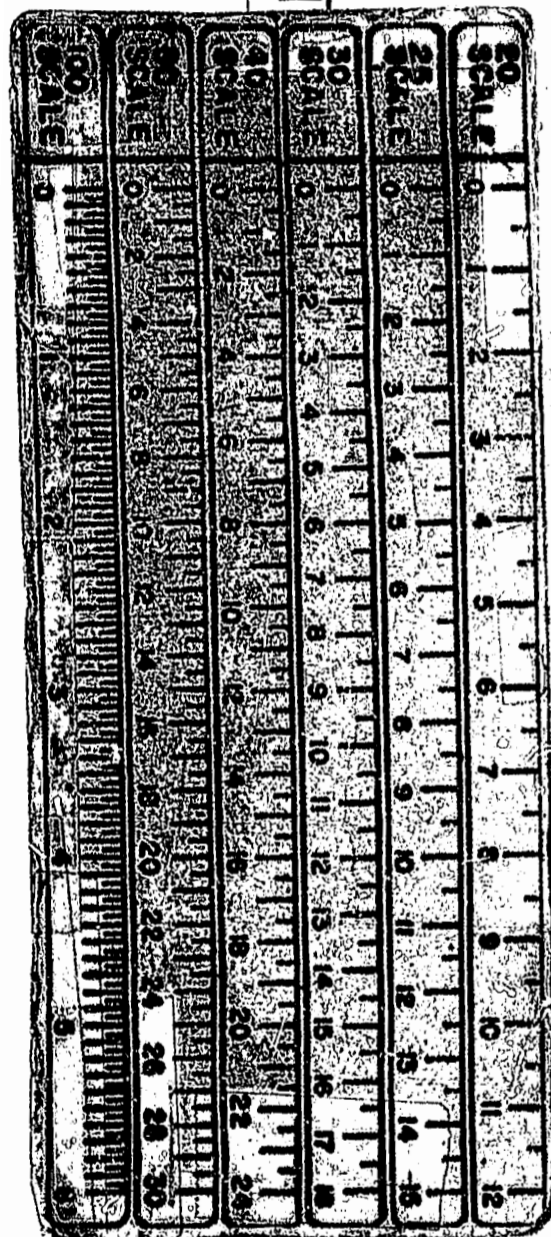


EXIST. 20' JAMES CITY COUNTY SERVICE AUTHORITY SAN. SEWER EASEMENT AS SHOWN IN AS-BUILT LOCATION, D.B. 141 - PG. 388



MATCH LINE - SEE SHEET 5

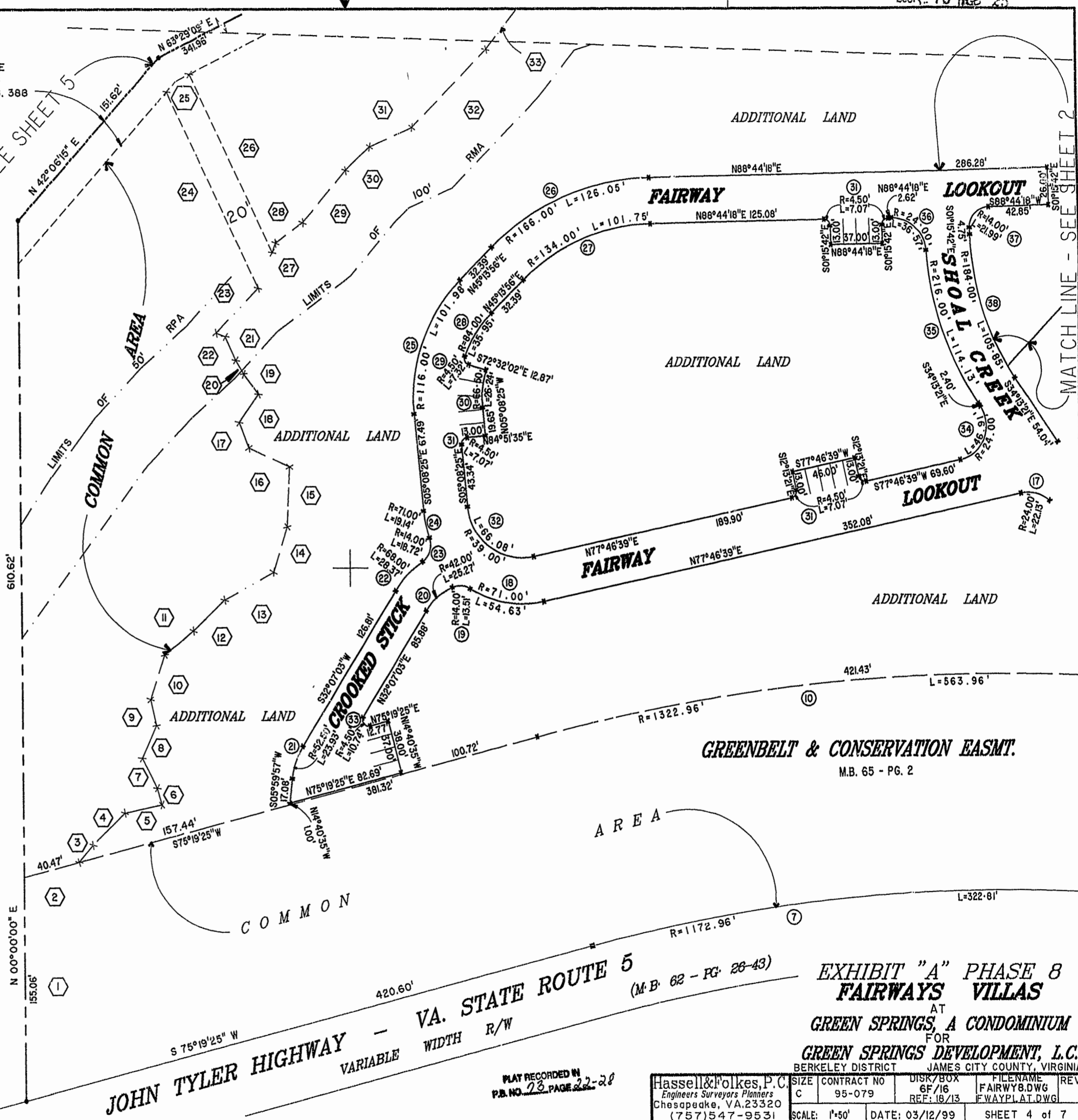
MATCH LINE - SEE SHEET 2



46-1-01-0-0001  
"GREENSPRINGS PLANTATION"  
(DB 322, PG 254)



1:29 pm  
Recorded 19 day of Jan 1999  
DOCUMENT # 990210827  
Kelsey S. Hand Clerk



VA. STATE ROUTE 5  
JOHN TYLER HIGHWAY  
VARIABLE WIDTH R/W

GREENBELT & CONSERVATION EASMT.  
M.B. 65 - PG. 2

EXHIBIT "A" PHASE 8  
FAIRWAYS VILLAS  
AT  
GREEN SPRINGS, A CONDOMINIUM  
FOR  
GREEN SPRINGS DEVELOPMENT, L.C.  
BERKELEY DISTRICT JAMES CITY COUNTY, VIRGINIA

PLAT RECORDED IN  
P.B. NO. 23 PAGE 22-28

Hassell & Polkes, P.C. Engineers Surveyors Planners Chesapeake, VA. 23320 (757)547-9531	SIZE C	CONTRACT NO 95-079	DISK/BOX 6F/16	FILENAME FAIRWAY8.DWG	REV. FWAYPLAT.DWG
SCALE: 1"=50'		DATE: 03/12/99		SHEET 4 of 7	