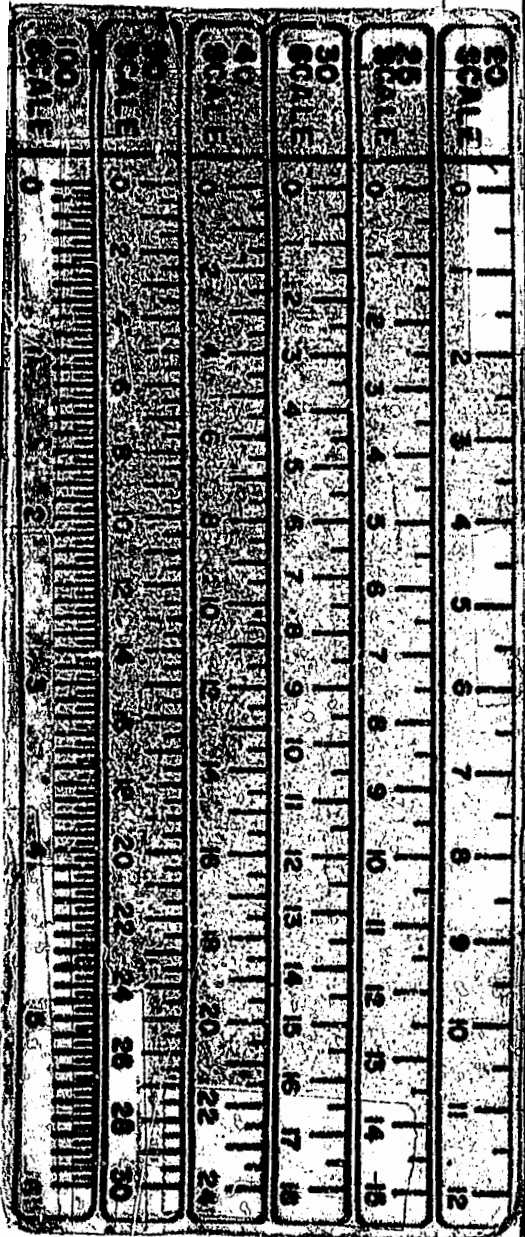
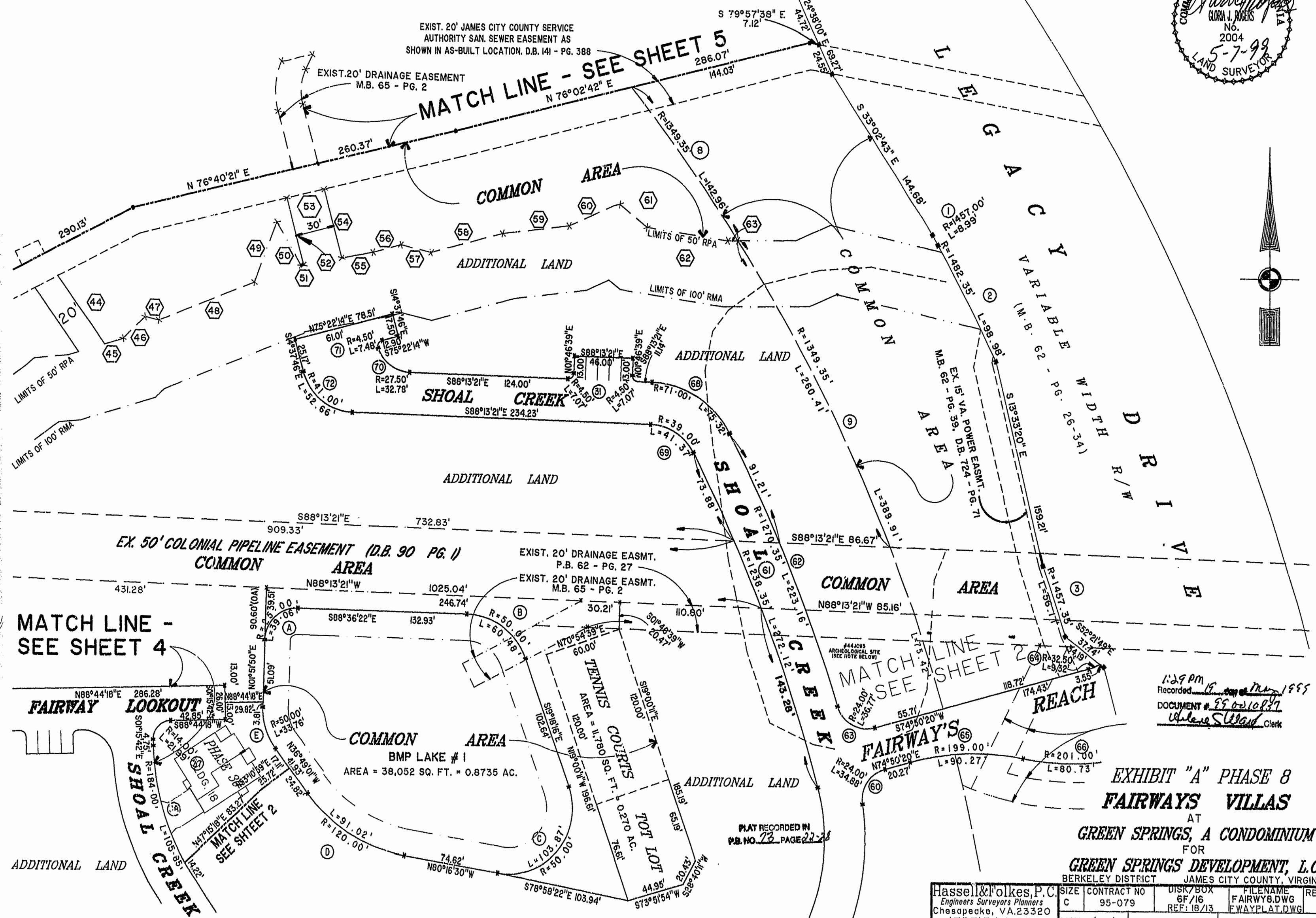


46-1-01-0-0001
"GREENSPRINGS PLANTATION"
(DB 322, PG 254)

EXIST. 20' JAMES CITY COUNTY SERVICE
AUTHORITY SAN. SEWER EASEMENT AS
SHOWN IN AS-BUILT LOCATION, D.B. 141 - PG. 388

EXIST. 20' DRAINAGE EASEMENT
M.B. 65 - PG. 2

MATCH LINE - SEE SHEET 5



MATCH LINE -
SEE SHEET 4

MATCH LINE -
SEE SHEET 2

1:29 PM
Recorded 19 May 1995
DOCUMENT # 85-0210837
Walter S. Ward, Clerk

EXHIBIT "A" PHASE 8
FAIRWAYS VILLAS
AT
GREEN SPRINGS, A CONDOMINIUM
FOR
GREEN SPRINGS DEVELOPMENT, L.C.
BERKELEY DISTRICT JAMES CITY COUNTY, VIRGINIA

PLAT RECORDED IN
P.B. NO. 73 PAGE 22-28

Hassell & Folkes, P.C. Engineers Surveyors Planners Chesapeake, VA 23320 (757) 547-9531	SIZE CONTRACT NO C 95-079	DISK/BOX 6F/16 REF: 18/13	FILENAME FAIRWY8.DWG FWAYPLAT.DWG	REV.
SCALE: 1" = 50'	DATE: 03/12/99	SHEET 3 of 7		