


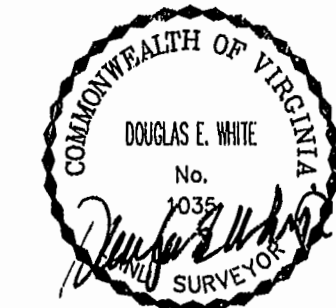
# LEGEND

- EASEMENT
- SETBACK LINE
- o I.P. TO BE SET
- PROPERTY LINE
- R/W LINE
- CONSERVATION EASEMENT

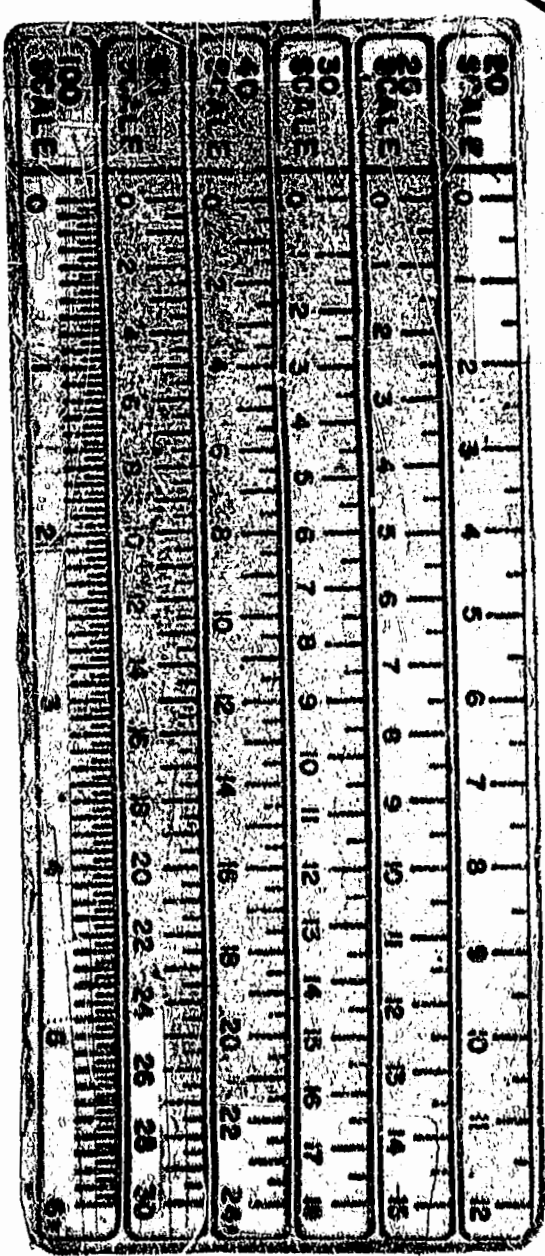
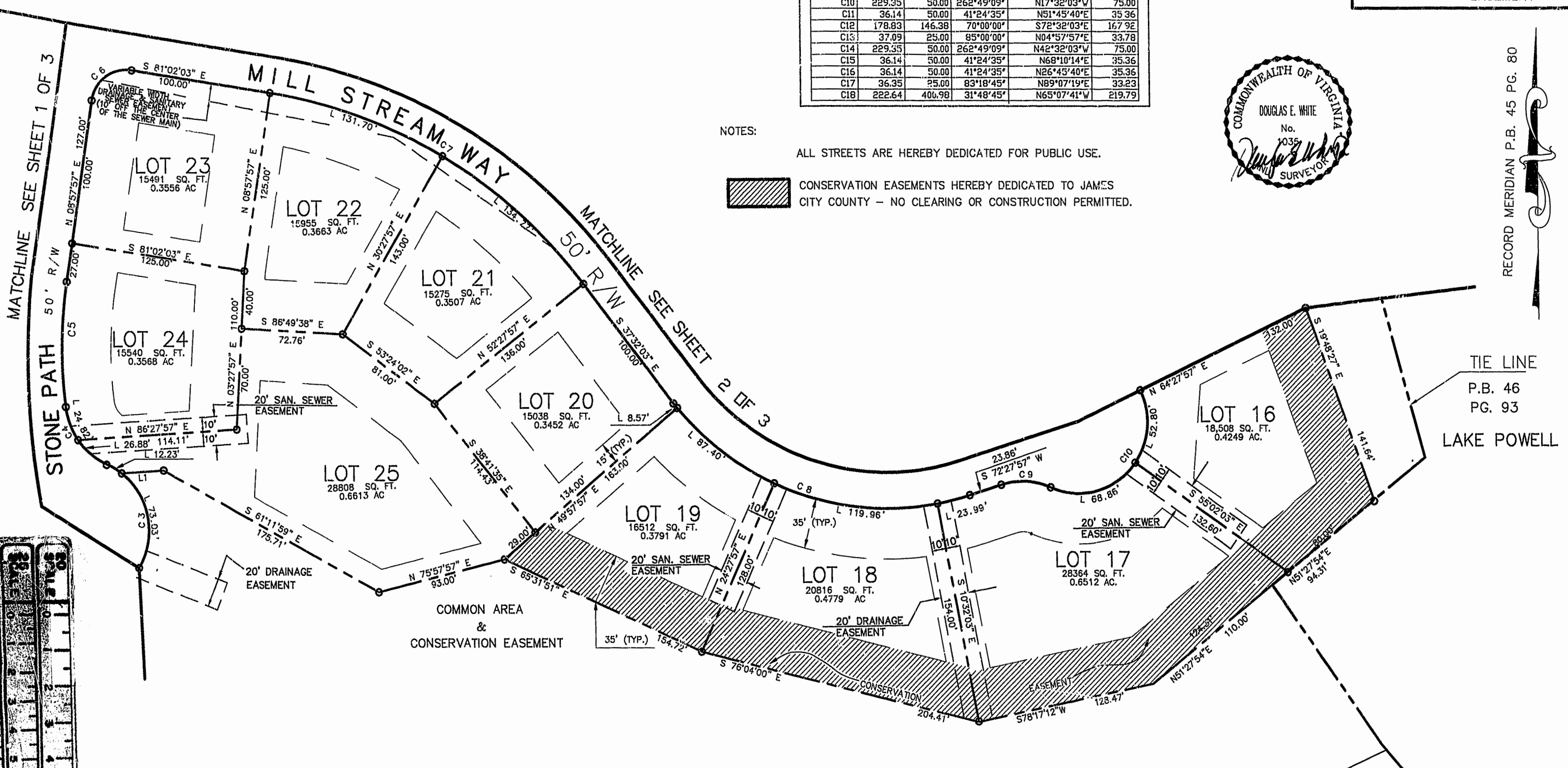
LINE TABLE		
LINE	LENGTH	BEARING
L1	30.00	N86°27'57"E
L2	29.32	S58°18'47"E

CURVE TABLE					
CURVE	LENGTH	RADIUS	DELTA	CHORD BEARING	CHORD
C1	39.27	25.00	90°00'00"	N36°02'03"W	35.36
C2	96.03	366.81	15°00'00"	S01°27'57"W	95.76
C3	209.43	50.00	239°59'08"	N53°58'23"E	86.61
C4	51.71	50.00	59°15'12"	S36°23'35"E	49.43
C5	86.99	316.81	15°43'56"	N01°05'59"E	86.72
C6	39.27	25.00	90°00'00"	N53°57'57"E	35.36
C7	266.47	350.98	43°30'00"	N59°17'03"W	260.11
C8	239.92	196.38	70°00'00"	S72°32'03"E	225.28
C9	36.14	50.00	41°24'35"	S86°49'46"E	35.36
C10	229.35	50.00	262°49'09"	N17°32'03"W	75.00
C11	36.14	50.00	41°24'35"	N51°45'40"E	35.36
C12	178.83	146.38	70°00'00"	S72°32'03"E	167.92
C13	37.09	25.00	85°00'00"	N04°57'57"E	33.78
C14	229.35	50.00	262°49'09"	N42°32'03"W	75.00
C15	36.14	50.00	41°24'35"	N68°10'14"E	35.36
C16	36.14	50.00	41°24'35"	N26°45'40"E	35.36
C17	36.35	25.00	83°18'45"	N89°07'19"E	33.23
C18	222.64	400.98	31°48'45"	N65°07'41"W	219.79

NOTES:  
 ALL STREETS ARE HEREBY DEDICATED FOR PUBLIC USE.  
 CONSERVATION EASEMENTS HEREBY DEDICATED TO JAMES CITY COUNTY - NO CLEARING OR CONSTRUCTION PERMITTED.

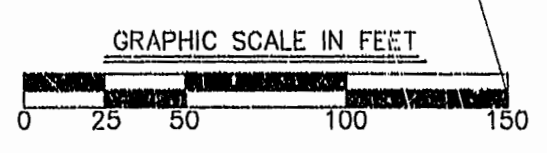


RECORD MERIDIAN P.B. 45 PG. 80



PHASE IV  
 D.B. 763 P.G. 59  
 P.B. 63 PGS. 18,19,20

PHASE IIIB  
 D.B. 684 P.G. 893  
 P.B. 59, PG. 31



PLAT OF  
**SETTLERS MILL**  
 AT JAMESTOWN  
 SECTION 6  
 FOR  
**SETTLERS MILL, INC.**  
 JAMESTOWN DISTRICT

JAMES CITY COUNTY VIRGINIA  
 SCALE: 1"=50' DATE: 12/7/98  
 SHEET 3 OF 3

10:06AM  
 Recorded 18 May 1999  
 DOCUMENT 990410323  
 [Signature]

PLAT RECORDED  
 P.B. NO. 73 PAGE 13-15

**Langley and McDonald, P.C.**  
 Engineers · Surveyors · Planners  
 Landscape Architects · Environmental Consultants  
 VIRGINIA BEACH WILLIAMSBURG