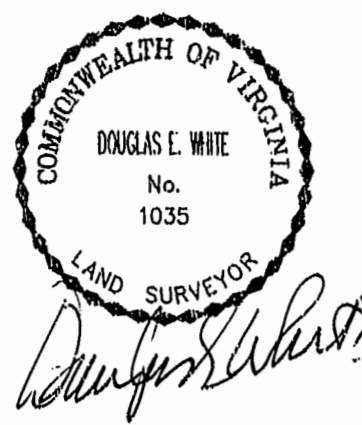


LEGEND

- EASEMENT
- SETBACK LINE
- I.P. TO BE SET
- PROPERTY LINE
- R/W LINE
- CONSERVATION EASEMENT



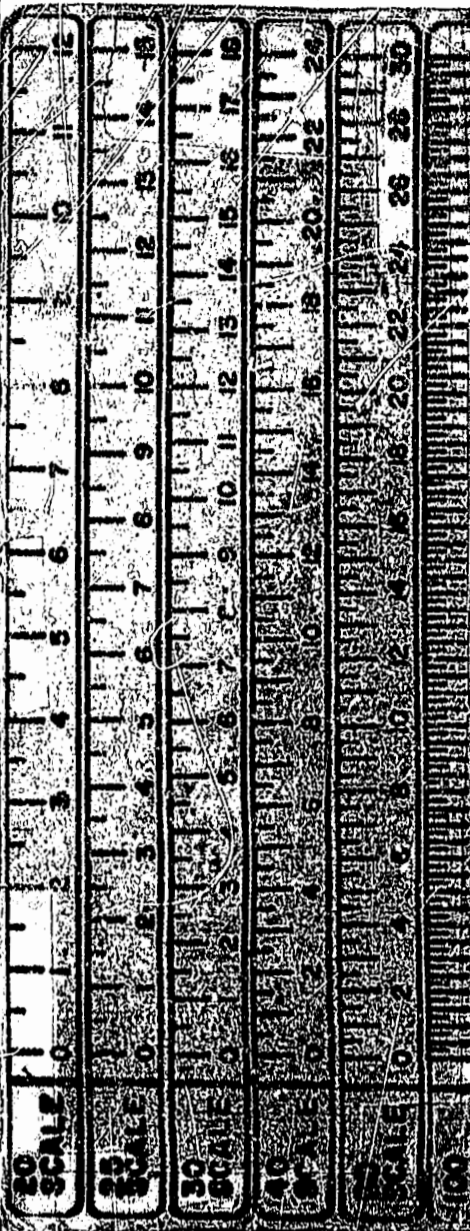
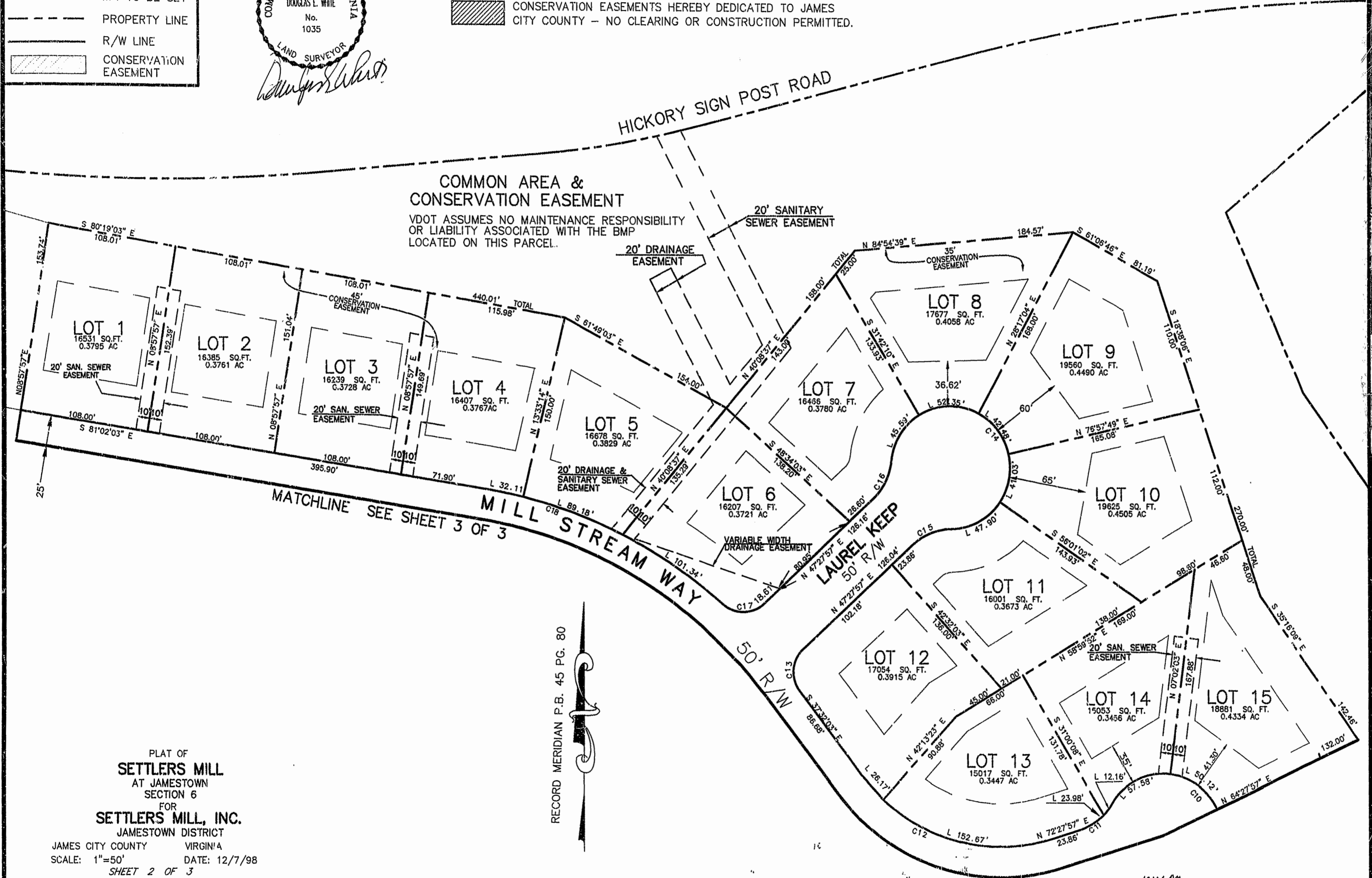
NOTES:

ALL STREETS ARE HEREBY DEDICATED FOR PUBLIC USE.

CONSERVATION EASEMENTS HEREBY DEDICATED TO JAMES CITY COUNTY - NO CLEARING OR CONSTRUCTION PERMITTED.

COMMON AREA & CONSERVATION EASEMENT

VDOT ASSUMES NO MAINTENANCE RESPONSIBILITY OR LIABILITY ASSOCIATED WITH THE BMP LOCATED ON THIS PARCEL.

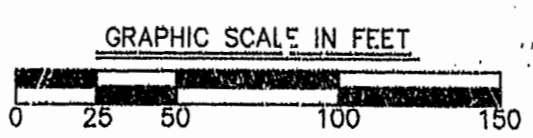


MATCHLINE SEE SHEET 3 OF 3

RECORD MERIDIAN P.B. 45 PG. 80

PLAT OF
SETTLERS MILL
 AT JAMESTOWN
 SECTION 6
 FOR
SETTLERS MILL, INC.
 JAMESTOWN DISTRICT
 JAMES CITY COUNTY VIRGINIA
 SCALE: 1"=50' DATE: 12/7/98
 SHEET 2 OF 3

Langley and McDonald, P.C.
 Engineers • Surveyors • Planners
 Landscape Architects Environmental Consultants
 VIRGINIA BEACH WILLIAMSBURG



PLAT RECORD
 P.B. NO. 73, PG. 13-15

10:06 AM
 Recorded 18 Nov 1999
 DOCUMENT # 98-03 10963
Chas. E. McDonald

5047-SHEET2.DWG 5047-1371W.PLT