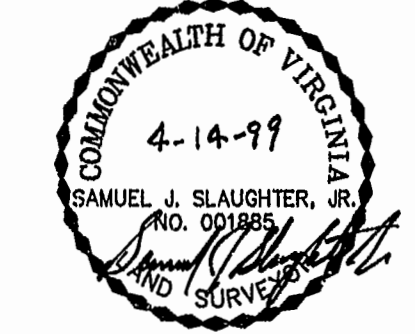
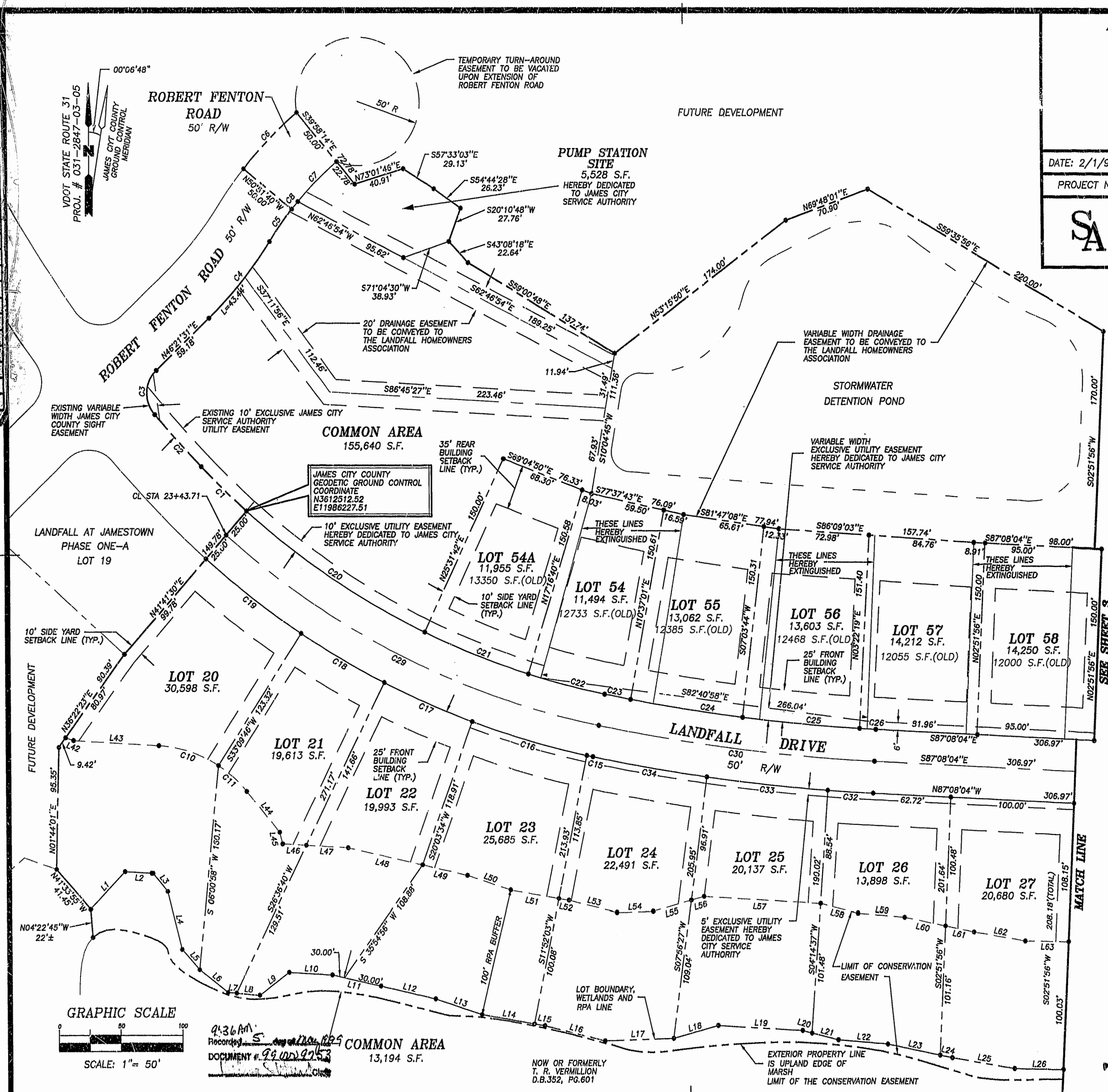
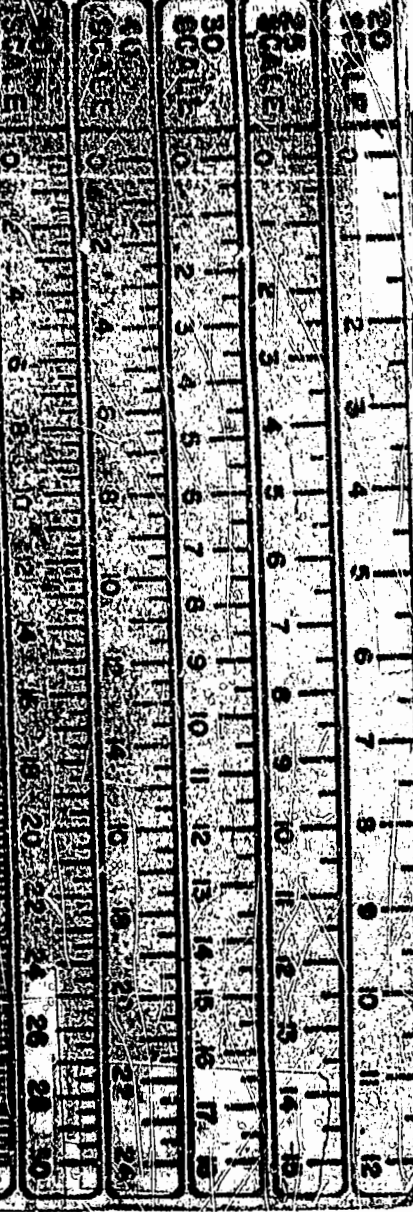


**AMENDED PLAT OF SUBDIVISION
LANDFALL
AT
JAMESTOWN
PHASE THREE
JAMESTOWN DISTRICT
JAMES CITY COUNTY, VIRGINIA**

DATE: 2/1/99 SHEET 2 OF 3 SCALE: 1"=50'

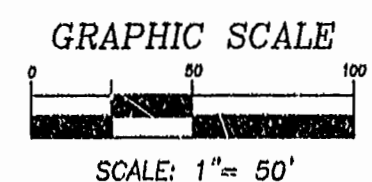
PROJECT NO: 95-010 DRAWN BY: CADD

SLEDD & ASSOCIATES, P.C.
ENGINEERS PLANNERS SURVEYORS
11832 ROCK LANDING DRIVE, SUITE 203
NEWPORT NEWS, VIRGINIA 23606
(757) 873-3386



LINE TABLE

NUMBER	DIRECTION	DISTANCE
L1	N43°53'29"E	40.51'
L2	S86°41'51"E	22.53'
L3	S39°52'00"E	18.49'
L4	S13°58'38"E	46.41'
L5	S41°38'58"E	21.23'
L6	S62°04'38"E	28.86'
L7	S84°46'59"E	6.93'
L8	S84°46'59"E	18.90'
L9	N53°18'44"E	29.97'
L10	S86°44'55"E	35.08'
L11	S77°22'48"E	40.01'
L12	S77°22'48"E	45.40'
L13	S71°44'39"E	39.16'
L14	S80°19'58"E	43.22'
L15	S80°19'58"E	8.51'
L16	S76°15'26"E	50.09'
L17	N87°56'25"E	55.38'
L18	N74°26'46"E	37.51'
L19	S86°34'46"E	68.46'
L20	S75°56'16"E	7.98'
L21	S75°56'16"E	21.92'
L22	S85°10'56"E	39.91'
L23	S78°27'25"E	43.07'
L24	S78°27'25"E	9.92'
L25	S80°18'54"E	51.26'
L26	S88°38'53"E	39.31'
L42	S70°54'03"E	6.71'
L43	S86°41'51"E	69.14'
L44	S39°52'00"E	41.47'
L45	S13°58'38"E	9.43'
L46	S86°44'55"E	19.11'
L47	S74°44'55"E	33.92'
L48	S77°22'48"E	61.27'
L49	S77°22'48"E	37.26'
L50	S71°44'39"E	36.58'
L51	S80°19'58"E	39.55'
L52	S80°19'58"E	8.23'
L53	S76°15'26"E	39.85'
L54	N88°01'56"E	29.30'
L55	N74°26'46"E	31.94'
L56	N74°26'46"E	10.75'
L57	S86°34'46"E	94.49'
L58	S75°56'16"E	31.13'
L59	S85°10'56"E	37.70'
L60	S78°27'25"E	33.68'
L61	S78°27'25"E	23.66'
L62	S80°18'54"E	42.35'
L63	S88°38'53"E	34.67'



9:36 AM
Recorded
DOCUMENT # 99-000-295
COMMON AREA
13,194 S.F.

NOW OR FORMERLY
T. R. VERMILION
D.B.352, PG.601

PLAT RECORDED IN
P.B. NO. 73 PAGE 7