

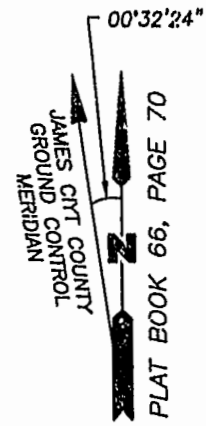
AMENDED PLAT OF SUBDIVISION  
**WATERFORD**  
 AT  
**POWHATAN SECONDARY**  
 PHASE FIVE  
 BERKELEY DISTRICT  
 JAMES CITY COUNTY, VIRGINIA

DATE: 2/3/99 SHEET 2 OF 3 SCALE: 1"=100'

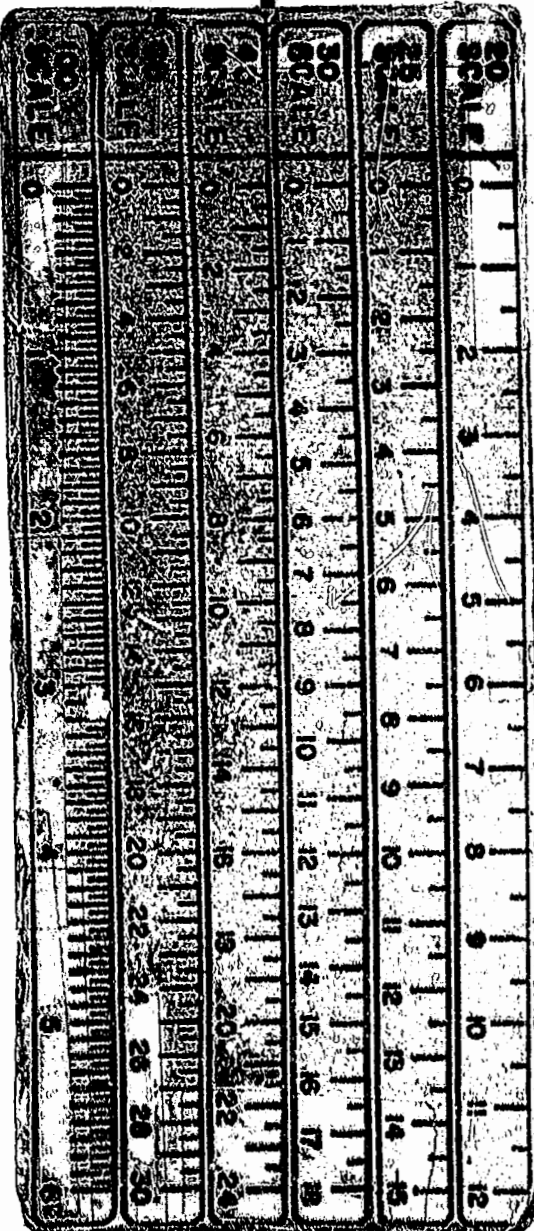
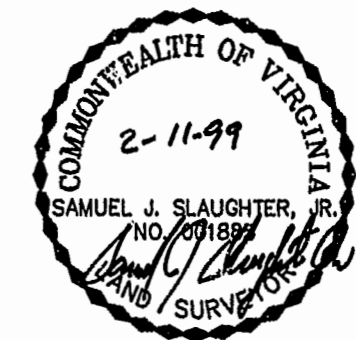
PROJECT NO: 97-008 DRAWN BY: CADD



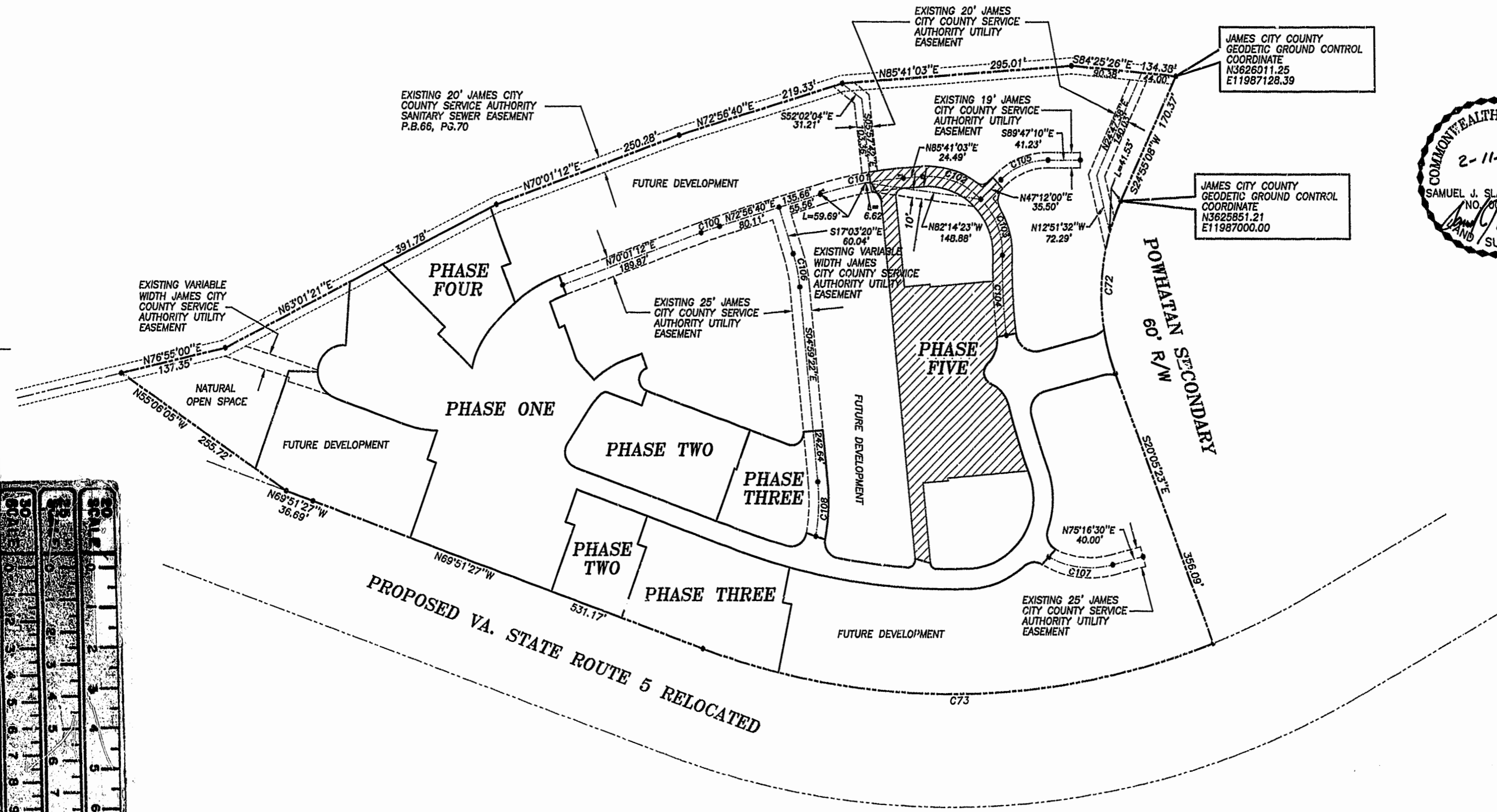
**SLEDD & ASSOCIATES, P.C.**  
 ENGINEERS PLANNERS SURVEYORS  
 11832 ROCK LANDING DRIVE, SUITE 203  
 NEWPORT NEWS, VIRGINIA 23606  
 (757) 873-3386



NOW OR FORMERLY  
 POWHATAN ENTERPRISES, INC.



GRAPHIC SCALE  
 0 100 200  
 SCALE: 1"= 100'



JAMES CITY COUNTY  
 GEODETIC GROUND CONTROL  
 COORDINATE  
 N3626011.25  
 E11987128.39

JAMES CITY COUNTY  
 GEODETIC GROUND CONTROL  
 COORDINATE  
 N3625851.21  
 E11987000.00

POWHATAN SECONDARY  
 60' R/W

CURVE DATA

NUMBER	RADIUS	DELTA	ARC	TANGENT	CHORD	CHORD BEARING
C72	280.00	45°00'31"	219.95	116.00	214.34	S02°24'52"W
C73	924.91	41°26'14"	668.91	349.84	654.43	S89°25'28"W
C100	487.50	02°55'28"	24.88	12.44	24.88	N71°28'56"E
C101	487.50	12°44'23"	108.40	54.42	108.17	N79°18'51"E
C102	95.00	49°43'07"	32.44	44.02	79.87	S69°27'24"E
C103	95.00	41°33'55"	68.92	36.05	67.42	S19°12'44"E
C104	722.49	07°53'06"	99.43	49.79	99.35	S02°22'19"E
C105	86.97	44°14'38"	67.16	35.35	65.50	N68°05'31"E
C106	200.00	12°03'58"	42.12	21.14	42.04	S11°01'21"E
C107	112.50	43°03'30"	84.54	44.38	82.57	S83°11'45"E
C108	250.00	15°30'38"	67.68	34.05	67.47	S02°45'57"W

Recorded 4 days 1999  
 DOCUMENT # 99-0029-111  
 Walter S. Slaughter

PLAT BOOK 73 PAGE 3-5