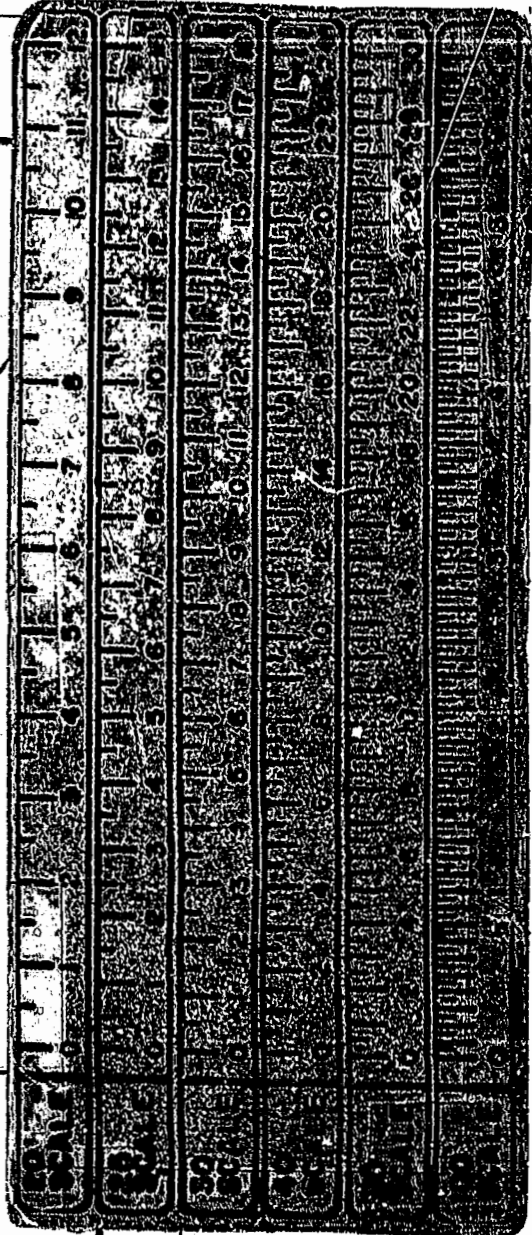
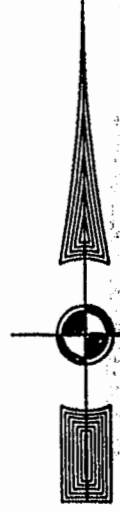
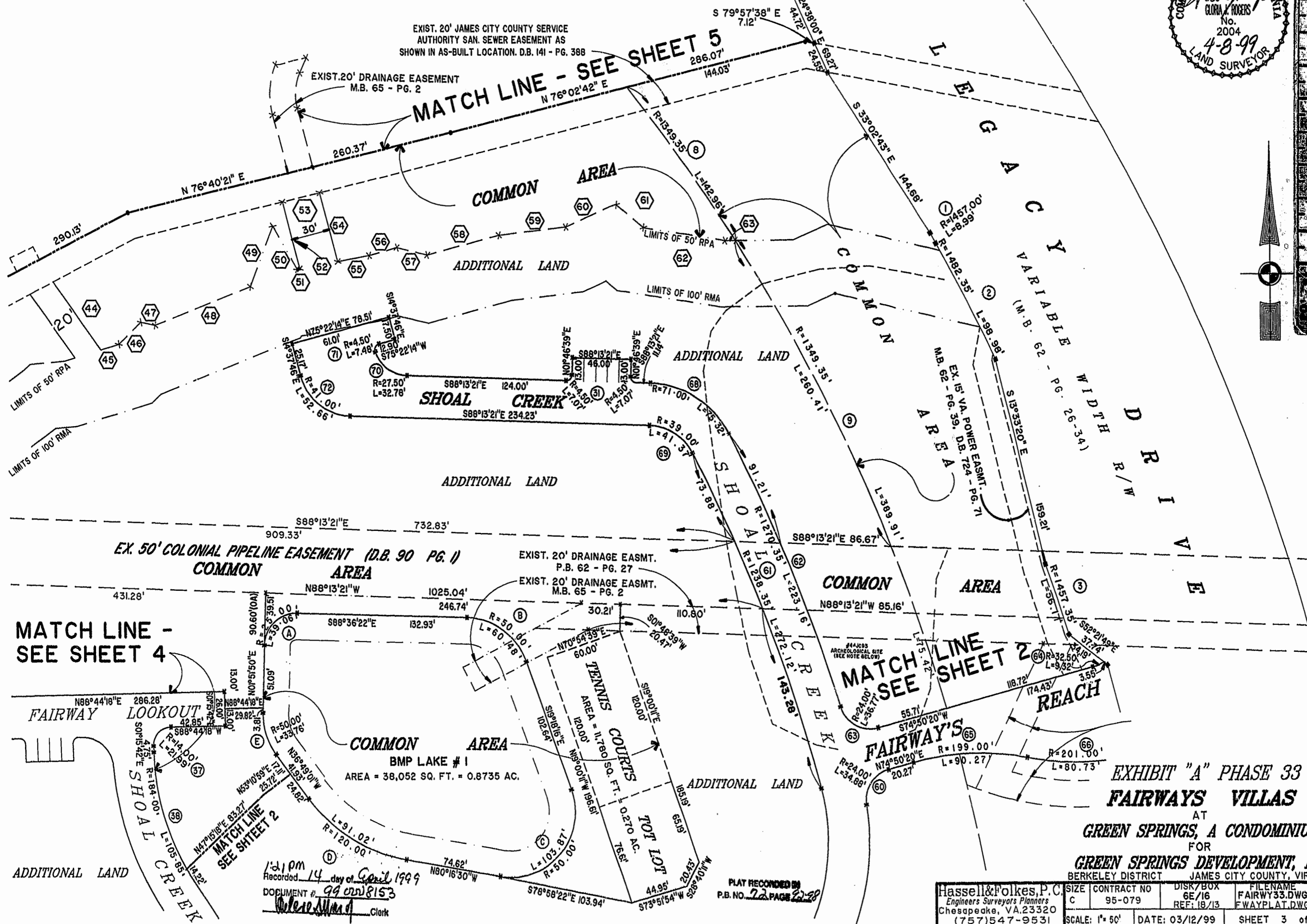


46-1-01-0-0001
"GREENSPRINGS PLANTATION"

(DB 322, PG 254)

EXIST. 20' JAMES CITY COUNTY SERVICE
AUTHORITY SAN. SEWER EASEMENT AS
SHOWN IN AS-BUILT LOCATION. D.B. 141 - PG. 388



MATCH LINE -
SEE SHEET 4

MATCH LINE - SEE SHEET 5

MATCH LINE
SEE SHEET 2

EXHIBIT "A" PHASE 33
FAIRWAYS VILLAS
AT
GREEN SPRINGS, A CONDOMINIUM
FOR
GREEN SPRINGS DEVELOPMENT, L.C.

1:21 pm
Recorded 14 day of April 1999
DOCUMENT # 99 020 8153
Clerk

PLAT RECORDED IN
P.B. NO. 22 PAGE 22-28

Hassell & Folkes, P.C. Engineers Surveyors Planners Chesapeake, VA 23320 (757) 547-9531	SIZE	CONTRACT NO	DISK/BOX	FILENAME	REV.
	C	95-079	6E/16	FAIRWAY33.DWG	
SCALE: 1" = 50'		DATE: 03/12/99	SHEET 3 of 7		