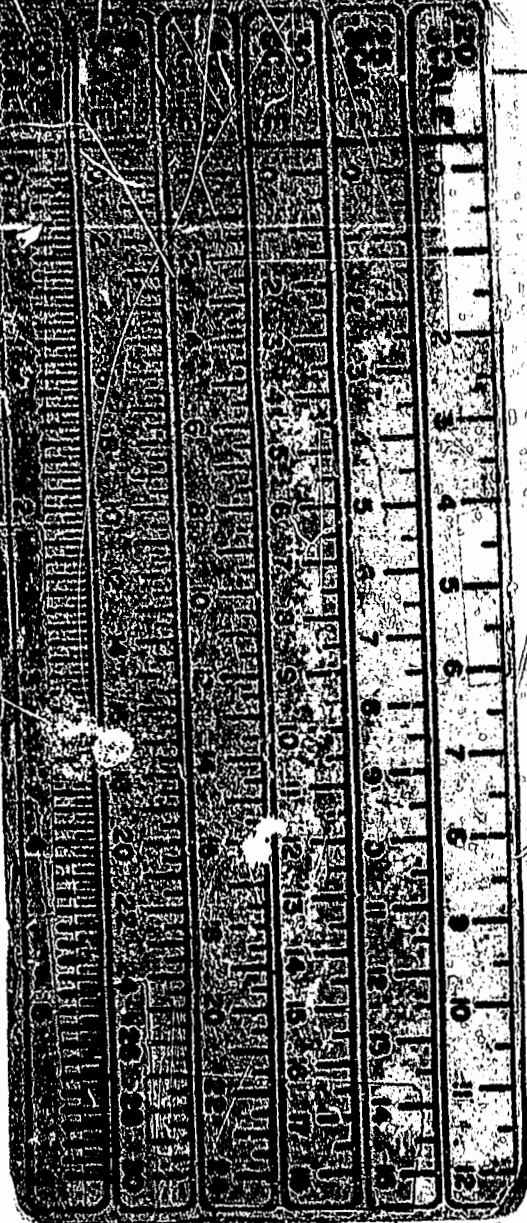
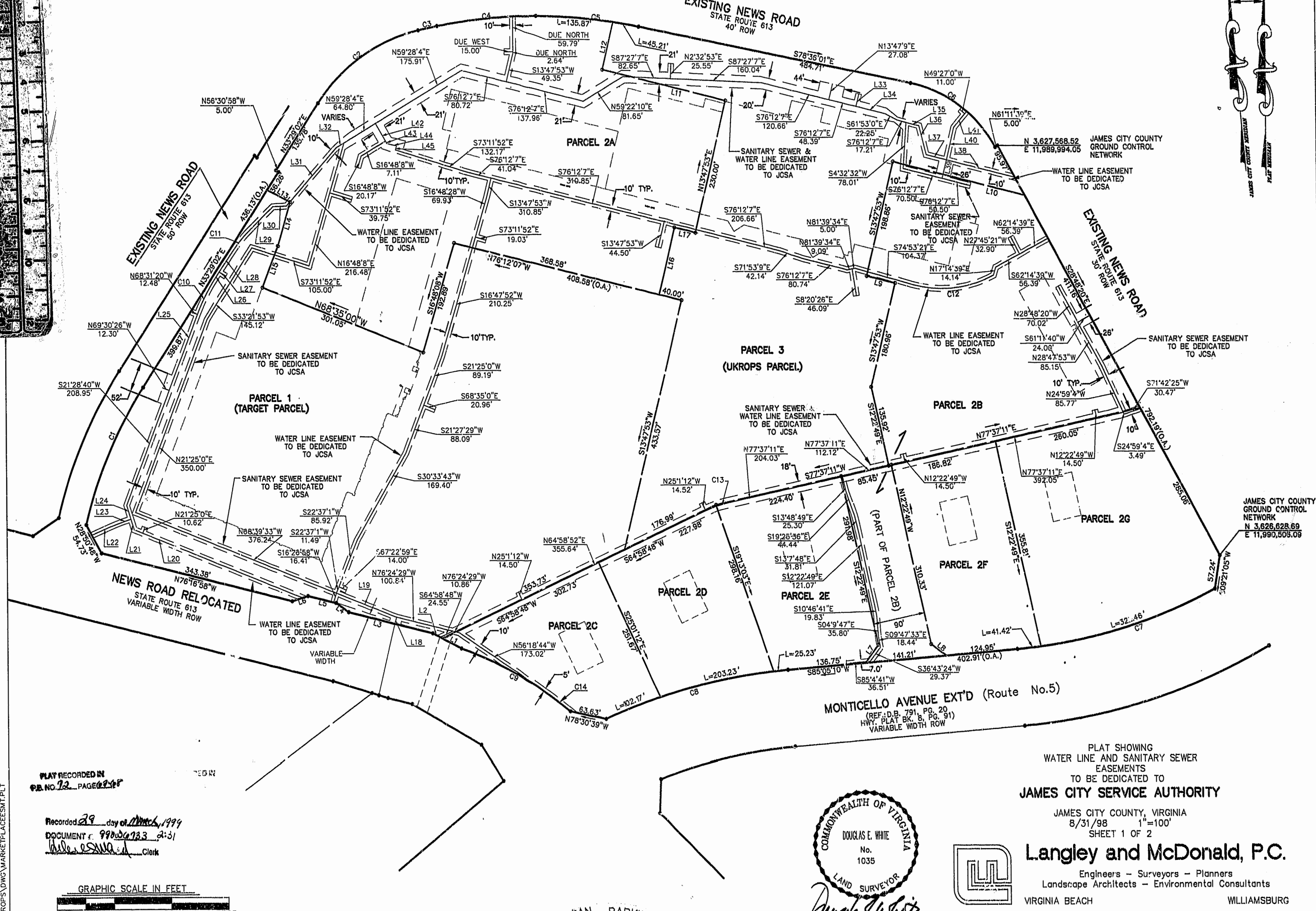


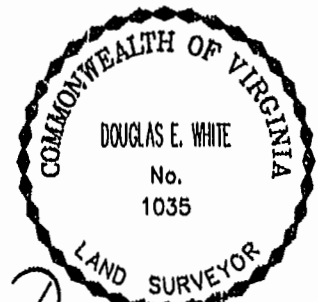
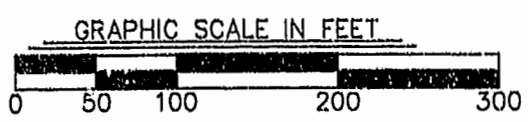
NOTE: ALL COURSE BEARINGS ON THIS PLAT ARE REFERENCED TO THE "PLAT MERIDIAN" NORTH ARROW. ROTATIONAL RELATIONSHIP OF "PLAT MERIDIAN" TO "JAMES CITY COUNTY MERIDIAN" IS FOR INFORMATIONAL PURPOSES ONLY.

Book 72 PAGE 67



PLAT RECORDED IN
P.B. NO. 72 PAGE 67

Recorded 29 day of March, 1999
DOCUMENT # 99000933 2:31
Dillon S. White, Clerk



Douglas E. White



PLAT SHOWING
WATER LINE AND SANITARY SEWER
EASEMENTS
TO BE DEDICATED TO
JAMES CITY SERVICE AUTHORITY
JAMES CITY COUNTY, VIRGINIA
8/31/98 1"=100'
SHEET 1 OF 2
Langley and McDonald, P.C.
Engineers - Surveyors - Planners
Landscape Architects - Environmental Consultants
VIRGINIA BEACH WILLIAMSBURG